

# Product Datasheet

## Cytokeratin 15 Antibody (15K01)

### NBP1-40062

Unit Size: 0.05 ml

Store at 4C short term. Aliquot and store at -20C long term. Avoid freeze-thaw cycles.

[www.novusbio.com](http://www.novusbio.com)



[technical@novusbio.com](mailto:technical@novusbio.com)

Protocols, Publications, Related Products, Reviews, Research Tools and Images at:  
[www.novusbio.com/NBP1-40062](http://www.novusbio.com/NBP1-40062)

Updated 7/28/2024 v.20.1

Earn rewards for product  
reviews and publications.

Submit a publication at [www.novusbio.com/publications](http://www.novusbio.com/publications)

Submit a review at [www.novusbio.com/reviews/destination/NBP1-40062](http://www.novusbio.com/reviews/destination/NBP1-40062)



**NBP1-40062****Cytokeratin 15 Antibody (15K01)**

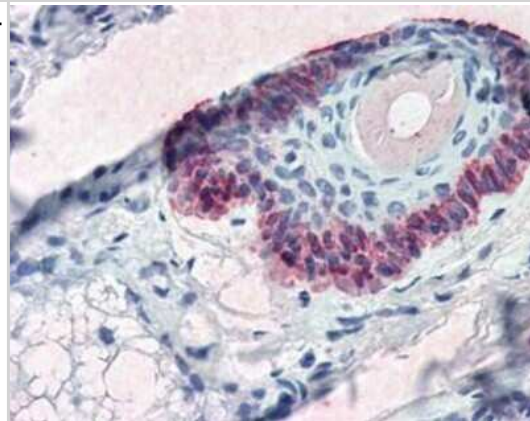
<b>Product Information</b>	
<b>Unit Size</b>	0.05 ml
<b>Concentration</b>	Concentrations vary lot to lot. See vial label for concentration. If unlisted please contact technical services.
<b>Storage</b>	Store at 4C short term. Aliquot and store at -20C long term. Avoid freeze-thaw cycles.
<b>Clonality</b>	Monoclonal
<b>Clone</b>	15K01
<b>Preservative</b>	0.9% Sodium Azide
<b>Isotype</b>	IgG2 Kappa
<b>Purity</b>	Protein A purified
<b>Buffer</b>	PBS (pH 7.4), 0.2% BSA and 40% Glycerol

<b>Product Description</b>	
<b>Host</b>	Mouse
<b>Gene ID</b>	3866
<b>Gene Symbol</b>	KRT15
<b>Species</b>	Human, Mouse, Rat, Bovine
<b>Reactivity Notes</b>	Please note that this antibody is reactive to Mouse and derived from the same host, Mouse. Additional Mouse on Mouse blocking steps may be required for IHC and ICC experiments. Please contact Technical Support for more information.
<b>Specificity/Sensitivity</b>	Recognizes human keratin 15.
<b>Immunogen</b>	Synthetic peptide corresponding to 17 residues from the C-terminal of human Cytokeratin 15.

<b>Product Application Details</b>	
<b>Applications</b>	Immunohistochemistry, Immunohistochemistry-Paraffin, Immunofluorescence
<b>Recommended Dilutions</b>	Immunohistochemistry, Immunohistochemistry-Paraffin 5 ug/ml, Immunofluorescence 1:10 - 1:500

**Images**

Immunohistochemistry-Paraffin: Cytokeratin 15 Antibody (15K01) [NBP1-40062] - Analysis of anti-KRT15 / Cytokeratin 15 antibody with human skin, hair follicle at concentration 5 ug/ml.





### **Novus Biologicals USA**

10730 E. Briarwood Avenue  
Centennial, CO 80112  
USA  
Phone: 303.730.1950  
Toll Free: 1.888.506.6887  
Fax: 303.730.1966  
nb-customerservice@bio-techne.com

### **Bio-Techne Canada**

21 Canmotor Ave  
Toronto, ON M8Z 4E6  
Canada  
Phone: 905.827.6400  
Toll Free: 855.668.8722  
Fax: 905.827.6402  
canada.inquires@bio-techne.com

### **Bio-Techne Ltd**

19 Barton Lane  
Abingdon Science Park  
Abingdon, OX14 3NB, United Kingdom  
Phone: (44) (0) 1235 529449  
Free Phone: 0800 37 34 15  
Fax: (44) (0) 1235 533420  
info.EMEA@bio-techne.com

### **General Contact Information**

[www.novusbio.com](http://www.novusbio.com)  
Technical Support: [nb-technical@bio-techne.com](mailto:nb-technical@bio-techne.com)  
Orders: [nb-customerservice@bio-techne.com](mailto:nb-customerservice@bio-techne.com)  
General: [novus@novusbio.com](mailto:novus@novusbio.com)

### **Limitations**

This product is for research use only and is not approved for use in humans or in clinical diagnosis. Primary Antibodies are guaranteed for 1 year from date of receipt.

For more information on our 100% guarantee, please visit [www.novusbio.com/guarantee](http://www.novusbio.com/guarantee)

Earn gift cards/discounts by submitting a review: [www.novusbio.com/reviews/submit/NBP1-40062](http://www.novusbio.com/reviews/submit/NBP1-40062)

Earn gift cards/discounts by submitting a publication using this product:  
[www.novusbio.com/publications](http://www.novusbio.com/publications)

