

# Product Datasheet

## **TOM1L1 Antibody** **NBP1-39791**

Unit Size: 0.05 mg

Store at 4C short term. Aliquot and store at -20C long term. Avoid freeze-thaw cycles.

[www.novusbio.com](http://www.novusbio.com)



[technical@novusbio.com](mailto:technical@novusbio.com)

Protocols, Publications, Related Products, Reviews, Research Tools and Images at:  
[www.novusbio.com/NBP1-39791](http://www.novusbio.com/NBP1-39791)

Updated 3/28/2021 v.20.1

**Earn rewards for product  
reviews and publications.**

Submit a publication at [www.novusbio.com/publications](http://www.novusbio.com/publications)

Submit a review at [www.novusbio.com/reviews/destination/NBP1-39791](http://www.novusbio.com/reviews/destination/NBP1-39791)



**NBP1-39791****TOM1L1 Antibody****Product Information**

|                      |  |
|----------------------|--|
| <b>Unit Size</b>     | 0.05 mg  |
| <b>Concentration</b> | 0.5 mg/ml  |
| <b>Storage</b>       | Store at 4C short term. Aliquot and store at -20C long term. Avoid freeze-thaw cycles. |
| <b>Clonality</b>     | Polyclonal   |
| <b>Preservative</b>  | 0.01% Sodium Azide   |
| <b>Isotype</b>       | IgG  |
| <b>Purity</b>        | Immunogen affinity purified  |
| <b>Buffer</b>        | PBS and 50% Glycerol   |

**Product Description**

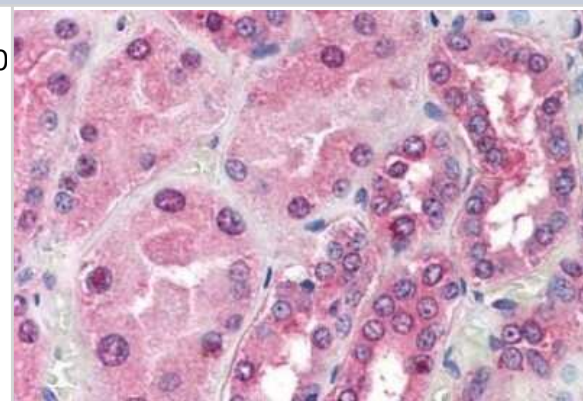
|                                |  |
|--------------------------------|--|
| <b>Host</b>                    | Rabbit   |
| <b>Gene ID</b>                 | 10040  |
| <b>Gene Symbol</b>             | TOM1L1   |
| <b>Species</b>                 | Human  |
| <b>Specificity/Sensitivity</b> | synthetic peptide corresponding to C-terminal residues of human TOM1L1 (TOM1-like 1 protein) |
| <b>Immunogen</b>               | Synthetic peptide from human TOM1L1.   |

**Product Application Details**

|                              |   |
|------------------------------|---|
| <b>Applications</b>          | Western Blot, ELISA, Immunohistochemistry, Immunohistochemistry-Paraffin                          |
| <b>Recommended Dilutions</b> | Western Blot 1 ug/ml, ELISA 1 ug/ml, Immunohistochemistry, Immunohistochemistry-Paraffin 20 ug/ml |

**Images**

Immunohistochemistry-Paraffin: TOM1L1 Antibody [NBP1-39791] - Analysis of anti-TOM1L1 antibody with human kidney at concentration 20 ug/ml.





### **Novus Biologicals USA**

10730 E. Briarwood Avenue  
Centennial, CO 80112  
USA  
Phone: 303.730.1950  
Toll Free: 1.888.506.6887  
Fax: 303.730.1966  
nb-customerservice@bio-techne.com

### **Bio-Techne Canada**

21 Canmotor Ave  
Toronto, ON M8Z 4E6  
Canada  
Phone: 905.827.6400  
Toll Free: 855.668.8722  
Fax: 905.827.6402  
canada.inquires@bio-techne.com

### **Bio-Techne Ltd**

19 Barton Lane  
Abingdon Science Park  
Abingdon, OX14 3NB, United Kingdom  
Phone: (44) (0) 1235 529449  
Free Phone: 0800 37 34 15  
Fax: (44) (0) 1235 533420  
info.EMEA@bio-techne.com

### **General Contact Information**

www.novusbio.com  
Technical Support: nb-technical@bio-  
techne.com  
Orders: nb-customerservice@bio-techne.com  
General: novus@novusbio.com

### **Limitations**

This product is for research use only and is not approved for use in humans or in clinical diagnosis. Primary Antibodies are guaranteed for 1 year from date of receipt.

For more information on our 100% guarantee, please visit [www.novusbio.com/guarantee](http://www.novusbio.com/guarantee)

Earn gift cards/discounts by submitting a review: [www.novusbio.com/reviews/submit/NBP1-39791](http://www.novusbio.com/reviews/submit/NBP1-39791)

Earn gift cards/discounts by submitting a publication using this product:  
[www.novusbio.com/publications](http://www.novusbio.com/publications)

