

Product Datasheet

CDC25C Antibody NBP1-33687

Unit Size: 100 ul

Aliquot and store at -20C or -80C. Avoid freeze-thaw cycles.

www.novusbio.com



technical@novusbio.com

Protocols, Publications, Related Products, Reviews, Research Tools and Images at:
www.novusbio.com/NBP1-33687

Updated 6/27/2021 v.20.1

Earn rewards for product
reviews and publications.

Submit a publication at www.novusbio.com/publications

Submit a review at www.novusbio.com/reviews/destination/NBP1-33687



NBP1-33687

CDC25C Antibody

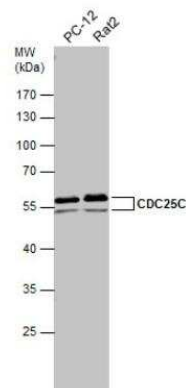
Product Information	
Unit Size	100 ul
Concentration	Concentrations vary lot to lot. See vial label for concentration. If unlisted please contact technical services.
Storage	Aliquot and store at -20C or -80C. Avoid freeze-thaw cycles.
Clonality	Polyclonal
Preservative	0.01% Thimerosal
Isotype	IgG
Purity	Immunogen affinity purified
Buffer	0.1M Tris (pH 7), 0.1M Glycine, 20% Glycerol
Target Molecular Weight	53 kDa

Product Description	
Host	Rabbit
Gene ID	995
Gene Symbol	CDC25C
Species	Human, Mouse, Rat
Marker	Mitosis Marker
Immunogen	Recombinant protein encompassing a sequence within the center region of human CDC25C. The exact sequence is proprietary.

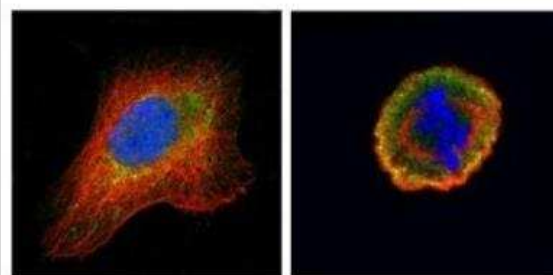
Product Application Details	
Applications	Western Blot, Immunocytochemistry/Immunofluorescence, Immunohistochemistry, Immunohistochemistry-Paraffin
Recommended Dilutions	Western Blot 1:500-1:3000, Immunohistochemistry 1:100-1:1000, Immunocytochemistry/Immunofluorescence 1:100-1:1000, Immunohistochemistry-Paraffin 1:100-1:1000

Images

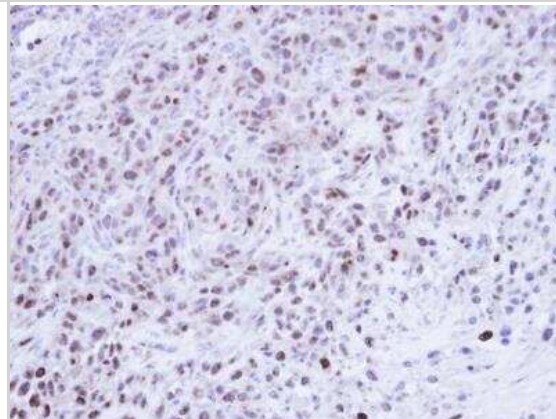
Western Blot: CDC25C Antibody [NBP1-33687] - Various whole cell extracts (30 ug) were separated by 10% SDS-PAGE, and the membrane was blotted with CDC25C antibody diluted at 1:500.



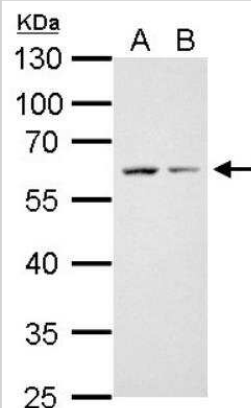
Immunocytochemistry/Immunofluorescence: CDC25C Antibody [NBP1-33687] - Paraformaldehyde-fixed U2OS, using CDC25C antibody (Geen) at 1:500 dilution. Alpha-tubulin filaments were labeled with an alpha Tubulin antibody (Red) at 1:2000.



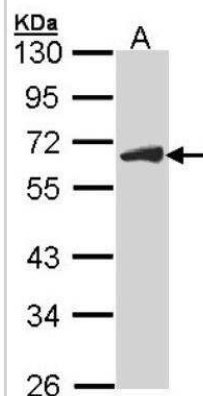
Immunohistochemistry-Paraffin: CDC25C Antibody [NBP1-33687] - Paraffin-embedded SAS xenograft, using antibody at 1:500 dilution.



Western Blot: CDC25C Antibody [NBP1-33687] - A. 30 ug Raw264. 7 whole cell lysate/extract, B. 30 ug C2C12 whole cell lysate/extract 10 % SDS-PAGE gel, antibody dilution 1:1000.



Western Blot: CDC25C Antibody [NBP1-33687] - Sample (30 ug of whole cell lysate) A: Raji 10% SDS PAGE; antibody diluted at 1:1000.





Novus Biologicals USA

10730 E. Briarwood Avenue
Centennial, CO 80112
USA
Phone: 303.730.1950
Toll Free: 1.888.506.6887
Fax: 303.730.1966
nb-customerservice@bio-techne.com

Bio-Techne Canada

21 Canmotor Ave
Toronto, ON M8Z 4E6
Canada
Phone: 905.827.6400
Toll Free: 855.668.8722
Fax: 905.827.6402
canada.inquires@bio-techne.com

Bio-Techne Ltd

19 Barton Lane
Abingdon Science Park
Abingdon, OX14 3NB, United Kingdom
Phone: (44) (0) 1235 529449
Free Phone: 0800 37 34 15
Fax: (44) (0) 1235 533420
info.EMEA@bio-techne.com

General Contact Information

www.novusbio.com
Technical Support: nb-technical@bio-techne.com
Orders: nb-customerservice@bio-techne.com
General: novus@novusbio.com

Limitations

This product is for research use only and is not approved for use in humans or in clinical diagnosis. Primary Antibodies are guaranteed for 1 year from date of receipt.

For more information on our 100% guarantee, please visit www.novusbio.com/guarantee

Earn gift cards/discounts by submitting a review: www.novusbio.com/reviews/submit/NBP1-33687

Earn gift cards/discounts by submitting a publication using this product:
www.novusbio.com/publications

