

Product Datasheet

CBS Antibody - BSA Free NBP1-33518

Unit Size: 0.1 ml

Aliquot and store at -20C or -80C. Avoid freeze-thaw cycles.

www.novusbio.com



technical@novusbio.com

Protocols, Publications, Related Products, Reviews, Research Tools and Images at:
www.novusbio.com/NBP1-33518

Updated 2/21/2025 v.20.1

Earn rewards for product
reviews and publications.

Submit a publication at www.novusbio.com/publications

Submit a review at www.novusbio.com/reviews/destination/NBP1-33518



NBP1-33518

CBS Antibody - BSA Free

Product Information

Unit Size	0.1 ml
Concentration	Concentrations vary lot to lot. See vial label for concentration. If unlisted please contact technical services.
Storage	Aliquot and store at -20C or -80C. Avoid freeze-thaw cycles.
Clonality	Polyclonal
Preservative	0.025% Proclin 300
Isotype	IgG
Purity	Antigen Affinity-purified
Buffer	PBS (pH 7), 20% Glycerol
Target Molecular Weight	61 kDa

Product Description

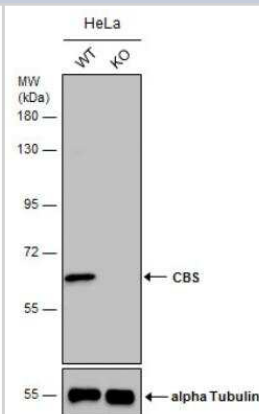
Host	Rabbit
Gene ID	875
Gene Symbol	CBS
Species	Human, Mouse, Rat
Immunogen	Recombinant protein encompassing a sequence within the center region of human CBS. The exact sequence is proprietary.

Product Application Details

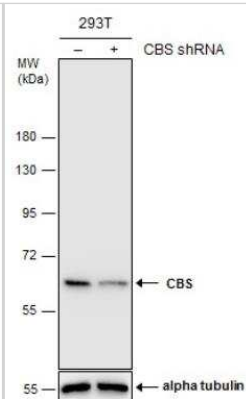
Applications	Western Blot, Immunocytochemistry/ Immunofluorescence, Immunohistochemistry, Immunohistochemistry-Paraffin, Immunoprecipitation, Knockdown Validated, Knockout Validated
Recommended Dilutions	Western Blot 1:500-1:3000, Immunohistochemistry 1:100-1:1000, Immunocytochemistry/ Immunofluorescence 1:100-1:1000, Immunoprecipitation 1:100-1:500, Immunohistochemistry-Paraffin 1:100-1:1000, Knockout Validated, Knockdown Validated

Images

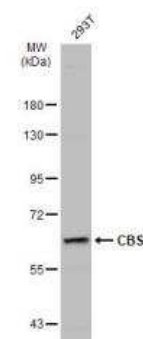
Western Blot: CBS Antibody [NBP1-33518] - Wild-type (WT) and CBS knockout (KO) HeLa cell extracts (30 ug) were separated by 7.5% SDS-PAGE, and the membrane was blotted with CBS antibody. HRP-conjugated anti-rabbit IgG antibody was used to detect the primary antibody.



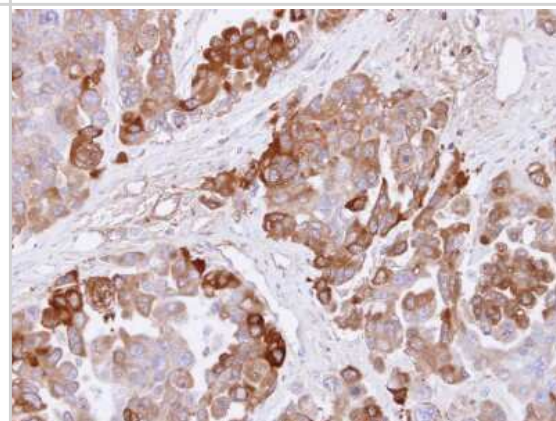
Western Blot: CBS Antibody [NBP1-33518] - Non-transfected (-) and transfected (+) 293T whole cell extracts (30 ug) were separated by 7.5% SDS-PAGE, and the membrane was blotted with CBS antibody. HRP-conjugated anti-rabbit IgG antibody was used to detect the primary antibody



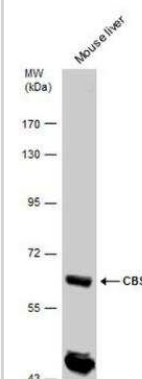
Western Blot: CBS Antibody [NBP1-33518] - Whole cell extract (30 ug) was separated by 7.5% SDS-PAGE, and the membrane was blotted with CBS antibody diluted at 1:1000. HRP-conjugated anti-rabbit IgG antibody was used to detect the primary antibody.



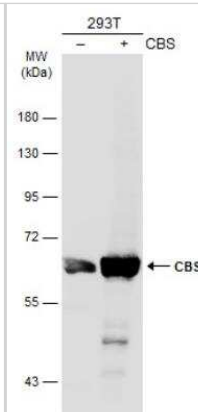
Immunohistochemistry-Paraffin: CBS Antibody [NBP1-33518] - OVCAR3 xenograft, using CBS antibody at 1:500 dilution. Antigen Retrieval: Trilogy™ (EDTA based, pH 8.0) buffer, 15min.



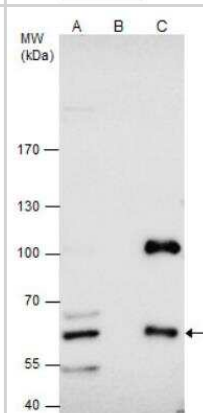
Western Blot: CBS Antibody [NBP1-33518] - Mouse tissue extracts (50 ug) was separated by 7.5% SDS-PAGE, and the membrane was blotted with CBS antibody diluted by 1:5000. The HRP-conjugated anti-rabbit IgG antibody (NBP2-19301) was used to detect the primary antibody.



Western Blot: CBS Antibody [NBP1-33518] - Non-transfected (-) and transfected (+) 293T whole cell extracts (30 ug) were separated by 7.5% SDS-PAGE, and the membrane was blotted with CBS antibody diluted at 1:1000. HRP-conjugated anti-rabbit IgG antibody was used to detect the primary antibody.



Immunoprecipitation: CBS Antibody [NBP1-33518] - CBS antibody immunoprecipitates CBS protein in IP experiments. IP samples: HepG2 whole cell extract. A. 50 ug HepG2 whole cell extract. B. Control with 4 ug of preimmune Rabbit IgG. C. Immunoprecipitation of CBS protein by 4 ug CBS antibody. 7.5 % SDS-PAGE. The immunoprecipitated CBS protein was detected by CBS antibody diluted at 1:500.

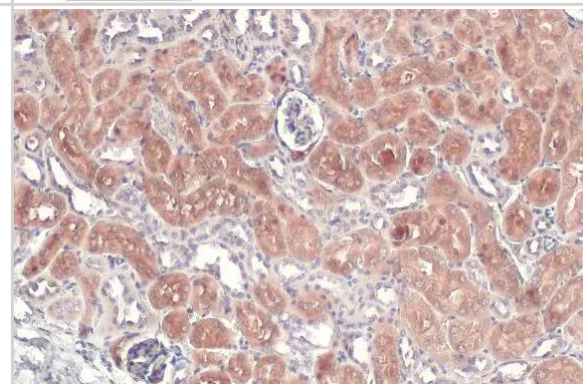


Immunohistochemistry-Paraffin: CBS Antibody [NBP1-33518] - CBS antibody detects CBS protein at cytoplasm and nucleus by immunohistochemical analysis.

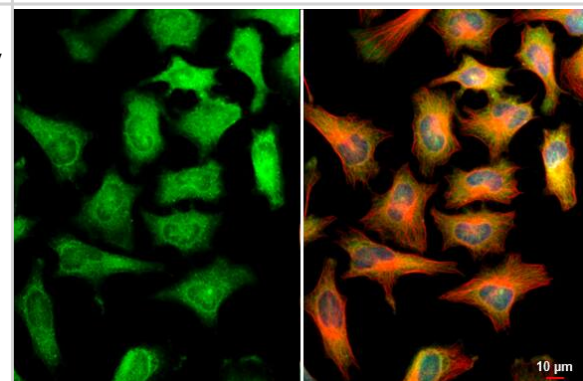
Sample: Paraffin-embedded mouse kidney.

CBS stained by CBS antibody (NBP1-33518) diluted at 1:500.

Antigen Retrieval: Citrate buffer, pH 6.0, 15 min



Immunocytochemistry/ Immunofluorescence: CBS Antibody [NBP1-33518] - CBS antibody detects CBS protein at cytoplasm and nucleus by immunofluorescent analysis. Sample: HeLa cells were fixed in ice-cold MeOH for 5 min. Green: CBS stained by CBS antibody (NBP1-33518) diluted at 1:500. Red: alpha Tubulin, a cytoskeleton marker, stained by alpha Tubulin antibody [GT114] diluted at 1:1000. Blue: Fluoroshield with DAPI. Scale bar= 10um.





Novus Biologicals USA

10730 E. Briarwood Avenue
Centennial, CO 80112
USA
Phone: 303.730.1950
Toll Free: 1.888.506.6887
Fax: 303.730.1966
nb-customerservice@bio-techne.com

Bio-Techne Canada

21 Canmotor Ave
Toronto, ON M8Z 4E6
Canada
Phone: 905.827.6400
Toll Free: 855.668.8722
Fax: 905.827.6402
canada.inquires@bio-techne.com

Bio-Techne Ltd

19 Barton Lane
Abingdon Science Park
Abingdon, OX14 3NB, United Kingdom
Phone: (44) (0) 1235 529449
Free Phone: 0800 37 34 15
Fax: (44) (0) 1235 533420
info.EMEA@bio-techne.com

General Contact Information

www.novusbio.com
Technical Support: nb-technical@bio-techne.com
Orders: nb-customerservice@bio-techne.com
General: novus@novusbio.com

Products Related to NBP1-33518

HAF008	Goat anti-Rabbit IgG Secondary Antibody [HRP]
NB7160	Goat anti-Rabbit IgG (H+L) Secondary Antibody [HRP]
NBP2-24891	Rabbit IgG Isotype Control
H00000875-P01-10ug	Recombinant Human CBS GST (N-Term) Protein

Limitations

This product is for research use only and is not approved for use in humans or in clinical diagnosis. Primary Antibodies are guaranteed for 1 year from date of receipt.

For more information on our 100% guarantee, please visit www.novusbio.com/guarantee

Earn gift cards/discounts by submitting a review: www.novusbio.com/reviews/submit/NBP1-33518

Earn gift cards/discounts by submitting a publication using this product:
www.novusbio.com/publications

