

Product Datasheet

Glypican 1 Antibody NBP1-33197

Unit Size: 0.1 ml

Aliquot and store at -20C or -80C. Avoid freeze-thaw cycles.

www.novusbio.com



technical@novusbio.com

Publications: 1

Protocols, Publications, Related Products, Reviews, Research Tools and Images at:
www.novusbio.com/NBP1-33197

Updated 10/23/2024 v.20.1

Earn rewards for product
reviews and publications.

Submit a publication at www.novusbio.com/publications

Submit a review at www.novusbio.com/reviews/destination/NBP1-33197



NBP1-33197**Glypican 1 Antibody****Product Information**

Unit Size	0.1 ml
Concentration	Concentrations vary lot to lot. See vial label for concentration. If unlisted please contact technical services.
Storage	Aliquot and store at -20C or -80C. Avoid freeze-thaw cycles.
Clonality	Polyclonal
Preservative	0.025% Proclin 300
Isotype	IgG
Purity	Antigen Affinity-purified
Buffer	PBS (pH 7), 20% Glycerol, 1% BSA
Target Molecular Weight	62 kDa

Product Description

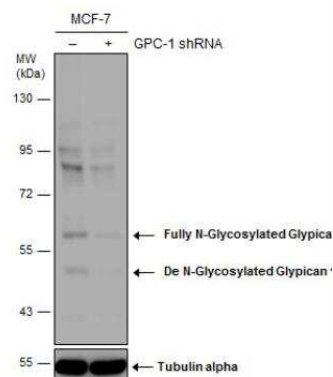
Host	Rabbit
Gene ID	2817
Gene Symbol	GPC1
Species	Human, Mouse, Rat
Reactivity Notes	Immunogen displays the following percentage of sequence identity for non-tested species: Bovine (89%).
Immunogen	Recombinant protein encompassing a sequence within the center region of human Glypican 1. The exact sequence is proprietary.

Product Application Details

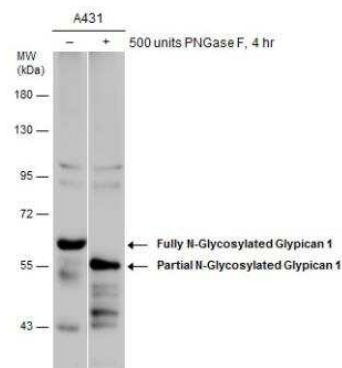
Applications	Western Blot, ELISA, Flow Cytometry, Immunocytochemistry/Immunofluorescence, Immunohistochemistry, Immunohistochemistry-Paraffin, Immunoprecipitation
Recommended Dilutions	Western Blot 1:500-1:3000, Flow Cytometry 1:50-1:200, ELISA 1:1000-1:10000, Immunohistochemistry 1:100-1:1000, Immunocytochemistry/Immunofluorescence 1:100-1:1000, Immunoprecipitation 1:100-1:500, Immunohistochemistry-Paraffin 1:100-1:1000

Images

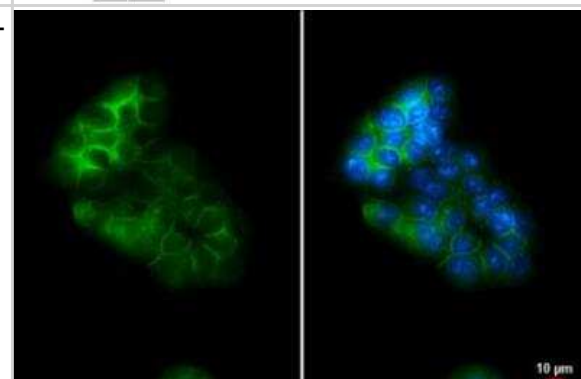
Western Blot: Glypican 1 Antibody [NBP1-33197] - Non-transfected (-) and transfected (+) MCF-7 whole cell extracts (50 ug) were separated by 7.5% SDS-PAGE, and the membrane was blotted with Glypican 1 antibody [N3C3]. The observed M.W. is based on the publication: PMID: 22351761, 26203194 and 21932778



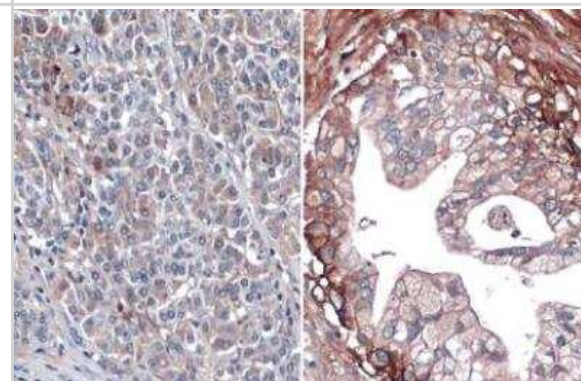
Western Blot: Glypican 1 Antibody [NBP1-33197] - Untreated (-) and treated (+) A431 whole cell extracts (30 ug) were separated by 7.5% SDS-PAGE, and the membrane was blotted with Glypican 1 antibody [N3C3]. The observed M.W. is based on the following publications: PMID: 22351761, 26203194 and 21932778



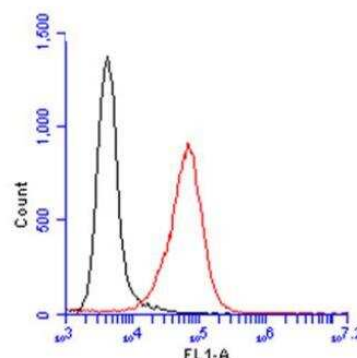
Immunocytochemistry/Immunofluorescence: Glypican 1 Antibody [NBP1-33197] - Glypican 1 antibody [N3C3] detects Glypican 1 protein at cell membrane and cytoplasm by immunofluorescent analysis. Sample: MCF-7 cells were fixed in ice-cold MeOH for 5 min. Green: Glypican 1 stained by Glypican 1 antibody [N3C3] diluted at 1:500. Blue: Hoechst 33342 staining. Scale bar= 10 μ m.



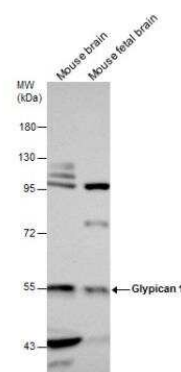
Immunohistochemistry-Paraffin: Glypican 1 Antibody [NBP1-33197] - Paraffin-embedded human normal pancreas (left) and pancreatic cancer (right). Glypican 1 stained by Glypican 1 antibody [N3C3] diluted at 1:500. Antigen Retrieval: Citrate buffer, pH 6.0, 15 min



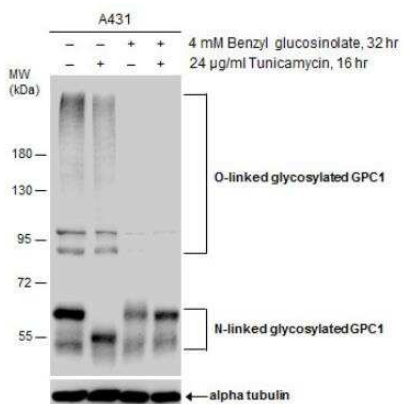
Flow Cytometry: Glypican 1 Antibody [NBP1-33197] - Sample: A431 cell. Black: Unlabelled sample was used as a control. Red: Glypican 1 antibody [N3C3] dilution: 1:100. Acquisition of 20,000 events were collected using a Dylight 488-conjugated secondary antibody for FACS analysis.



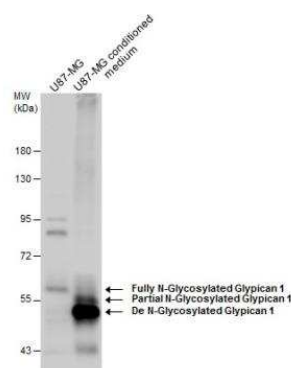
Western Blot: Glypican 1 Antibody [NBP1-33197] - Mouse tissue extracts (50 ug) were separated by 7.5% SDS-PAGE, and the membrane was blotted with Glypican 1 antibody [N3C3] diluted at 1:1500.



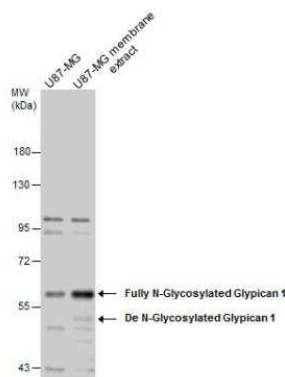
Western Blot: Glypican 1 Antibody [NBP1-33197] - Untreated (-) and treated (+) A431 whole cell extracts (30 ug) were separated by 7.5% SDS-PAGE, and the membrane was blotted with Glypican 1 antibody [N3C3]. The HRP-conjugated anti-rabbit IgG antibody was used to detect the primary antibody.



Western Blot: Glypican 1 Antibody [NBP1-33197] - U87-MG whole cell extract and conditioned medium (30 ug) were separated by 7.5% SDS-PAGE, and the membrane was blotted with Glypican 1 antibody [N3C3] diluted at 1:1500. The HRP-conjugated anti-rabbit IgG antibody] was used to detect the primary antibody.

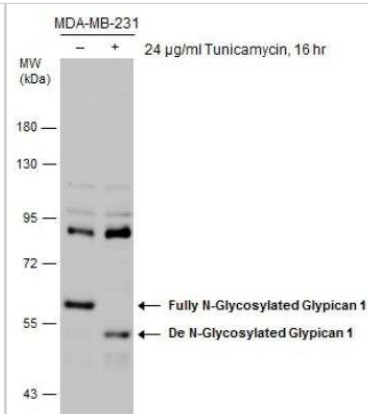


Western Blot: Glypican 1 Antibody [NBP1-33197] - U87-MG whole cell and membrane extracts (30 ug) were separated by 7.5% SDS-PAGE, and the membrane was blotted with Glypican 1 antibody [N3C3] diluted at 1:1500. The HRP-conjugated anti-rabbit IgG antibody was used to detect the primary antibody.

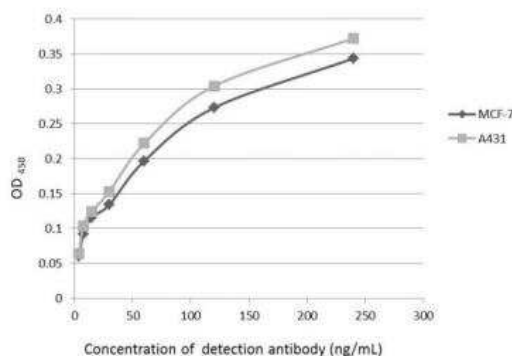


Western Blot: Glypican 1 Antibody [NBP1-33197] - Untreated (-) and treated (+) MDA-MB-231 whole cell extracts (30 ug) were separated by 7.5% SDS-PAGE, and the membrane was blotted with Glypican 1 antibody [N3C3]. HRP-conjugated anti-rabbit IgG antibody was used to detect the primary antibody.

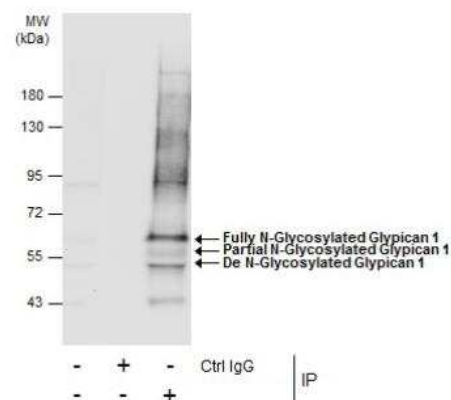
The observed M.W. is based on the following publications: PMID: 22351761, 26203194 and 21932778



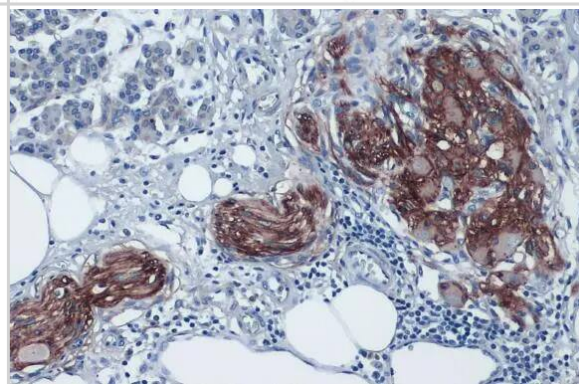
ELISA: Glypican 1 Antibody [NBP1-33197] - An ELISA plate is coated with MCF-7 and A431 cells. The coated cells are detected with Glypican 1 antibody at concentration ranged from 7.5 to 240 ng/mL.



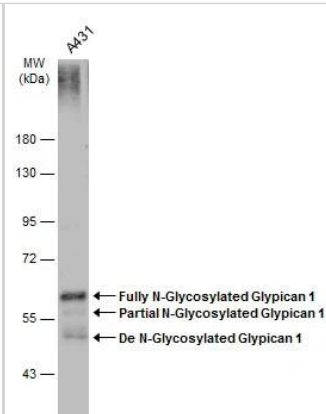
Immunoprecipitation: Glypican 1 Antibody [NBP1-33197] - Immunoprecipitation of Glypican 1 protein from MCF-7 whole cell extracts using 5 ug of Glypican 1 antibody [N3C3].



Immunohistochemistry-Paraffin: Glypican 1 Antibody [NBP1-33197] - Glypican 1 antibody [N3C3] detects Glypican 1 protein at cell membrane and cytoplasm by immunohistochemical analysis. Sample: Paraffin-embedded human pancreatic cancer. Glypican 1 stained by Glypican 1 antibody [N3C3] (NBP1-33197) diluted at 1:1000. Antigen Retrieval: Citrate buffer, pH 6.0, 15 min



Western Blot: Glypican 1 Antibody [NBP1-33197] - A431 whole cell extracts (30 ug) was separated by 7.5% SDS-PAGE, and the membrane was blotted with Glypican 1 antibody [N3C3] (NBP1-33197) diluted at 1:1500. The HRP-conjugated anti-rabbit IgG antibody was used to detect the primary antibody.



Publications

Zhu, T;Wang, H;Wang, L;Zhong, X;Huang, W;Deng, X;Guo, H;Xiong, J;Xu, Y;Fan, J; Ginsenoside Rg1 attenuates high glucose-induced endothelial barrier dysfunction in human umbilical vein endothelial cells by protecting the endothelial glycocalyx Exp Ther Med 2019-05-01 [PMID: 30988758] (WB, Human)



Novus Biologicals USA

10730 E. Briarwood Avenue
Centennial, CO 80112
USA
Phone: 303.730.1950
Toll Free: 1.888.506.6887
Fax: 303.730.1966
nb-customerservice@bio-techne.com

Bio-Techne Canada

21 Canmotor Ave
Toronto, ON M8Z 4E6
Canada
Phone: 905.827.6400
Toll Free: 855.668.8722
Fax: 905.827.6402
canada.inquires@bio-techne.com

Bio-Techne Ltd

19 Barton Lane
Abingdon Science Park
Abingdon, OX14 3NB, United Kingdom
Phone: (44) (0) 1235 529449
Free Phone: 0800 37 34 15
Fax: (44) (0) 1235 533420
info.EMEA@bio-techne.com

General Contact Information

www.novusbio.com
Technical Support: nb-technical@bio-techne.com
Orders: nb-customerservice@bio-techne.com
General: novus@novusbio.com

Products Related to NBP1-33197

HAF008	Goat anti-Rabbit IgG Secondary Antibody [HRP]
NB7160	Goat anti-Rabbit IgG (H+L) Secondary Antibody [HRP]
NBP2-24891	Rabbit IgG Isotype Control
NBP3-17035PEP	Glypican 1 Recombinant Protein Antigen

Limitations

This product is for research use only and is not approved for use in humans or in clinical diagnosis. Primary Antibodies are guaranteed for 1 year from date of receipt.

For more information on our 100% guarantee, please visit www.novusbio.com/guarantee

Earn gift cards/discounts by submitting a review: www.novusbio.com/reviews/submit/NBP1-33197

Earn gift cards/discounts by submitting a publication using this product:
www.novusbio.com/publications

