

# Product Datasheet

## ATP6V1H Antibody - BSA Free

### NBP1-32980

Unit Size: 0.1 ml

Aliquot and store at -20C or -80C. Avoid freeze-thaw cycles.

[www.novusbio.com](http://www.novusbio.com)



[technical@novusbio.com](mailto:technical@novusbio.com)

Protocols, Publications, Related Products, Reviews, Research Tools and Images at:  
[www.novusbio.com/NBP1-32980](http://www.novusbio.com/NBP1-32980)

Updated 9/9/2025 v.20.1

Earn rewards for product  
reviews and publications.

Submit a publication at [www.novusbio.com/publications](http://www.novusbio.com/publications)

Submit a review at [www.novusbio.com/reviews/destination/NBP1-32980](http://www.novusbio.com/reviews/destination/NBP1-32980)



**NBP1-32980**

ATP6V1H Antibody - BSA Free

**Product Information**

<b>Unit Size</b>	0.1 ml
<b>Concentration</b>	Concentrations vary lot to lot. See vial label for concentration. If unlisted please contact technical services.
<b>Storage</b>	Aliquot and store at -20C or -80C. Avoid freeze-thaw cycles.
<b>Clonality</b>	Polyclonal
<b>Preservative</b>	0.025% Proclin 300
<b>Isotype</b>	IgG
<b>Purity</b>	Antigen Affinity-purified
<b>Buffer</b>	PBS (pH 7), 20% Glycerol
<b>Target Molecular Weight</b>	56 kDa

**Product Description**

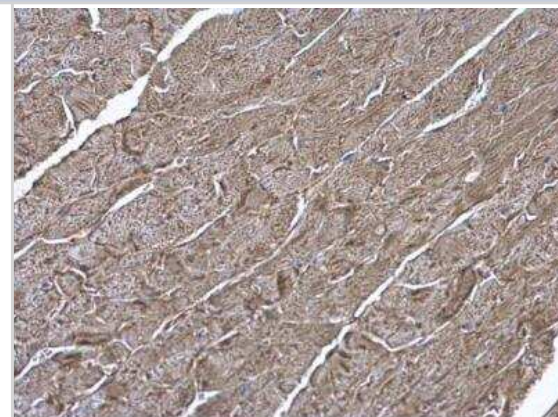
<b>Description</b>	Novus Biologicals Rabbit ATP6V1H Antibody - BSA Free (NBP1-32980) is a polyclonal antibody validated for use in IHC, WB and ICC/IF. All Novus Biologicals antibodies are covered by our 100% guarantee.
<b>Host</b>	Rabbit
<b>Gene ID</b>	51606
<b>Gene Symbol</b>	ATP6V1H
<b>Species</b>	Human, Mouse, Rat, Zebrafish
<b>Reactivity Notes</b>	Xenopus laevis (94%).
<b>Immunogen</b>	Recombinant protein encompassing a sequence within the center region of human ATP6V1H. The exact sequence is proprietary.

**Product Application Details**

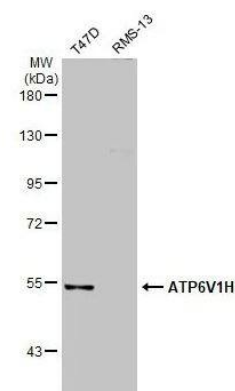
<b>Applications</b>	Western Blot, Immunohistochemistry-Paraffin, Immunocytochemistry/Immunofluorescence, Immunohistochemistry, Immunohistochemistry Whole-Mount
<b>Recommended Dilutions</b>	Western Blot 1:500-1:3000, Immunohistochemistry 1:100-1:1000, Immunocytochemistry/ Immunofluorescence Assay dependent, Immunohistochemistry-Paraffin 1:100-1:1000, Immunohistochemistry Whole-Mount Assay dependent

**Images**

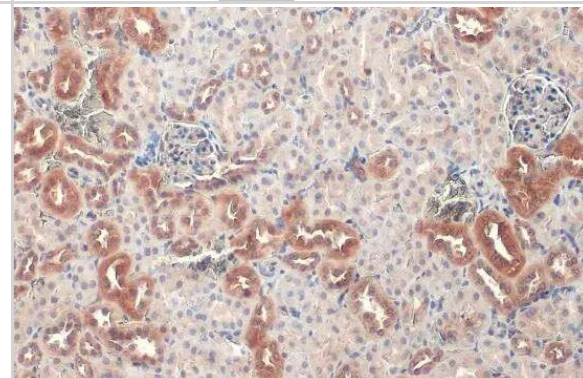
Immunohistochemistry-Paraffin: ATP6V1H Antibody [NBP1-32980] - Mouse heart. ATP6V1H antibody [N3C3] diluted at 1:500. Antigen Retrieval: Trilogy™ (EDTA based, pH 8.0) buffer, 15min.



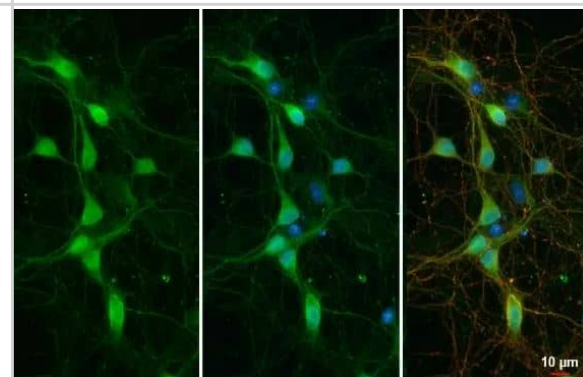
**Western Blot: ATP6V1H Antibody [NBP1-32980]** - Various whole cell extracts (30 ug) were separated by 7.5% SDS-PAGE, and the membrane was blotted with ATP6V1H antibody [N3C3] diluted at 1:1000. The HRP-conjugated anti-rabbit IgG antibody (NBP2-19301) was used to detect the primary antibody.



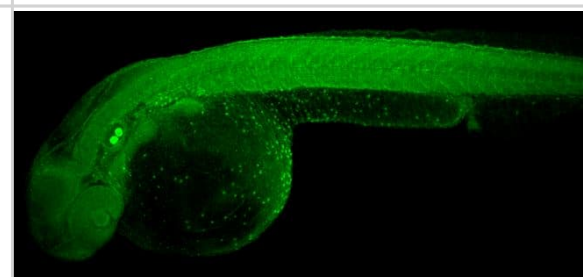
**Immunohistochemistry-Paraffin: ATP6V1H Antibody [NBP1-32980]** - Mouse kidney. ATP6V1H stained by ATP6V1H antibody [N3C3] diluted at 1:500. Antigen Retrieval: Citrate buffer, pH 6.0, 15 min



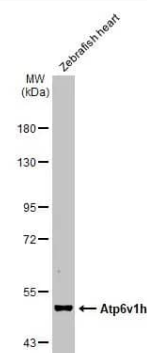
**ICC/IF-ATP6V1H Antibody-NBP1-32980-** DIV10 rat hippocampal neuron cells were fixed in 4% paraformaldehyde at RT for 15 min. Green: ATP6V1H stained by ATP6V1H antibody [N3C3] diluted at 1:500. Red: Tau, a marker, stained by Tau antibody [287] diluted at 1:500.



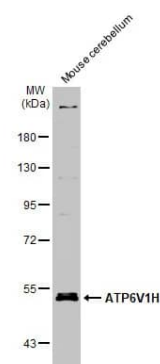
**IHC-Wm-ATP6V1H Antibody-NBP1-32980-2 days-post-fertilization zebrafish embryo.** ATP6V1H antibody [N3C3] dilution: 1:50.



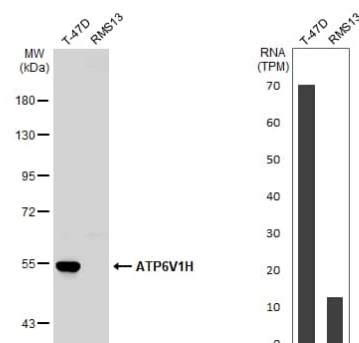
Western Blot: ATP6V1H Antibody [NBP1-32980] - Zebrafish tissue extract (30 ug) was separated by 7.5% SDS-PAGE, and the membrane was blotted with ATP6V1H antibody [N3C3] (NBP1-32980) diluted at 1:500. The HRP-conjugated anti-rabbit IgG antibody was used to detect the primary antibody, and the signal was developed with Trident ECL plus-Enhanced.



Western Blot: ATP6V1H Antibody [NBP1-32980] - Mouse tissue extract (50 ug) was separated by 7.5% SDS-PAGE, and the membrane was blotted with ATP6V1H antibody [N3C3] (NBP1-32980) diluted at 1:1000. The HRP-conjugated anti-rabbit IgG antibody was used to detect the primary antibody.



Western Blot: ATP6V1H Antibody [NBP1-32980] - Various whole cell extracts (30 ug) were separated by 7.5% SDS-PAGE, and the membrane was blotted with ATP6V1H antibody [N3C3] diluted at 1:1000. The HRP-conjugated anti-rabbit IgG antibody was used to detect the primary antibody. Corresponding RNA expression data for the same cell lines are based on Human Protein Atlas program.





### **Novus Biologicals USA**

10730 E. Briarwood Avenue  
Centennial, CO 80112  
USA  
Phone: 303.730.1950  
Toll Free: 1.888.506.6887  
Fax: 303.730.1966  
nb-customerservice@bio-techne.com

### **Bio-Techne Canada**

21 Canmotor Ave  
Toronto, ON M8Z 4E6  
Canada  
Phone: 905.827.6400  
Toll Free: 855.668.8722  
Fax: 905.827.6402  
canada.inquires@bio-techne.com

### **Bio-Techne Ltd**

19 Barton Lane  
Abingdon Science Park  
Abingdon, OX14 3NB, United Kingdom  
Phone: (44) (0) 1235 529449  
Free Phone: 0800 37 34 15  
Fax: (44) (0) 1235 533420  
info.EMEA@bio-techne.com

### **General Contact Information**

www.novusbio.com  
Technical Support: nb-technical@bio-techne.com  
Orders: nb-customerservice@bio-techne.com  
General: novus@novusbio.com

### **Products Related to NBP1-32980**

---

HAF008	Goat anti-Rabbit IgG Secondary Antibody [HRP]
NB7160	Goat anti-Rabbit IgG (H+L) Secondary Antibody [HRP]
NBP2-24891	Rabbit IgG Isotype Control
H00051606-P01-10ug	Recombinant Human ATP6V1H GST (N-Term) Protein

---

### **Limitations**

This product is for research use only and is not approved for use in humans or in clinical diagnosis. Primary Antibodies are guaranteed for 1 year from date of receipt.

For more information on our 100% guarantee, please visit [www.novusbio.com/guarantee](http://www.novusbio.com/guarantee)

Earn gift cards/discounts by submitting a review: [www.novusbio.com/reviews/submit/NBP1-32980](http://www.novusbio.com/reviews/submit/NBP1-32980)

Earn gift cards/discounts by submitting a publication using this product:  
[www.novusbio.com/publications](http://www.novusbio.com/publications)

