

# Product Datasheet

## EEF1E1 Antibody - BSA Free NBP1-32184

Unit Size: 0.1 ml

Aliquot and store at -20C or -80C. Avoid freeze-thaw cycles.

[www.novusbio.com](http://www.novusbio.com)



[technical@novusbio.com](mailto:technical@novusbio.com)

Protocols, Publications, Related Products, Reviews, Research Tools and Images at:  
[www.novusbio.com/NBP1-32184](http://www.novusbio.com/NBP1-32184)

Updated 2/21/2025 v.20.1

Earn rewards for product  
reviews and publications.

Submit a publication at [www.novusbio.com/publications](http://www.novusbio.com/publications)

Submit a review at [www.novusbio.com/reviews/destination/NBP1-32184](http://www.novusbio.com/reviews/destination/NBP1-32184)



**NBP1-32184**

EEF1E1 Antibody - BSA Free

**Product Information**

|                                |  |
|--------------------------------|--|
| <b>Unit Size</b>               | 0.1 ml   |
| <b>Concentration</b>           | Concentrations vary lot to lot. See vial label for concentration. If unlisted please contact technical services. |
| <b>Storage</b>                 | Aliquot and store at -20C or -80C. Avoid freeze-thaw cycles.   |
| <b>Clonality</b>               | Polyclonal   |
| <b>Preservative</b>            | 0.01% Thimerosal   |
| <b>Isotype</b>                 | IgG  |
| <b>Purity</b>                  | Antigen Affinity-purified  |
| <b>Buffer</b>                  | 0.1M Tris (pH 7), 0.1M Glycine, 10% Glycerol   |
| <b>Target Molecular Weight</b> | 20 kDa   |

**Product Description**

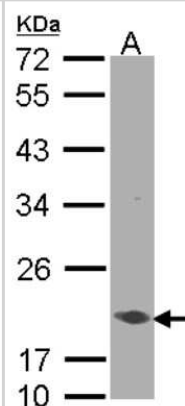
|                         |  |
|-------------------------|--|
| <b>Host</b>             | Rabbit   |
| <b>Gene ID</b>          | 9521   |
| <b>Gene Symbol</b>      | EEF1E1   |
| <b>Species</b>          | Human, Mouse   |
| <b>Reactivity Notes</b> | Immunogen displays the following percentage of sequence identity for non-tested species: Rat (87%).                      |
| <b>Immunogen</b>        | Recombinant protein encompassing a sequence within the center region of human EEF1E1. The exact sequence is proprietary. |

**Product Application Details**

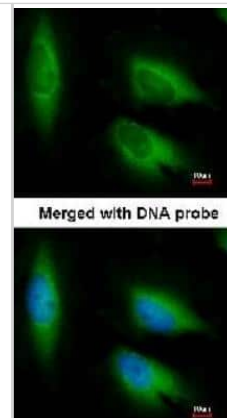
|                              |  |
|------------------------------|--|
| <b>Applications</b>          | Western Blot, Immunocytochemistry/ Immunofluorescence, Immunohistochemistry, Immunohistochemistry-Paraffin, Knockout Validated   |
| <b>Recommended Dilutions</b> | Western Blot 1:500-1:3000, Immunohistochemistry 1:100-1:1000, Immunocytochemistry/ Immunofluorescence 1:100-1:1000, Immunohistochemistry-Paraffin 1:100-1:1000, Knockout Validated |

**Images**

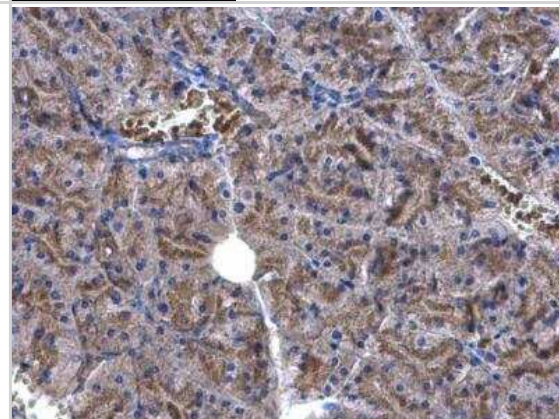
Western Blot: EEF1E1 Antibody [NBP1-32184] - Sample(30 ug of whole cell lysate)A:A431 12% SDS PAGE, antibody diluted at 1:1000.



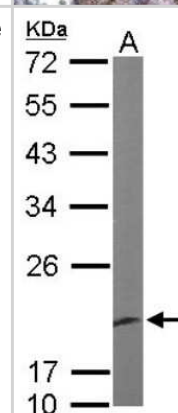
Immunocytochemistry/Immunofluorescence: EEF1E1 Antibody [NBP1-32184] - Analysis of paraformaldehyde-fixed HeLa, using EEF1E1 antibody at 1:200 dilution.



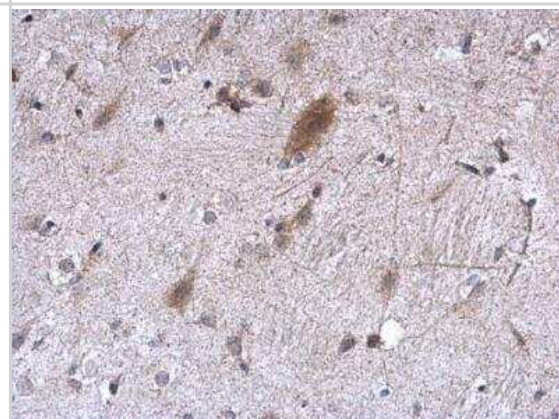
Immunohistochemistry-Paraffin: EEF1E1 Antibody [NBP1-32184] - Mouse fore brain. EEF1E1 antibody [N1C3] diluted at 1:500. Antigen Retrieval: Trilogy™ (EDTA based, pH 8.0) buffer, 15min.



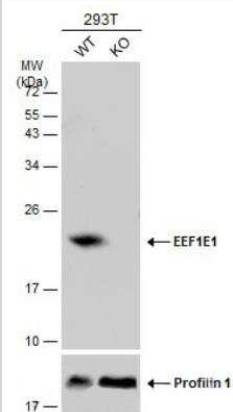
Western Blot: EEF1E1 Antibody [NBP1-32184] - Sample (50 ug of whole cell lysate) A: Mouse brain 12% SDS PAGE; antibody diluted at 1:1000.



Immunohistochemistry-Paraffin: EEF1E1 Antibody [NBP1-32184] - Mouse fore brain. EEF1E1 antibody [N1C3] diluted at 1:500. Antigen Retrieval: Trilogy™ (EDTA based, pH 8.0) buffer, 15min.



Western Blot: EEF1E1 Antibody [NBP1-32184] - Wild-type (WT) and EEF1E1 knockout (KO) 293T cell extracts (30 ug) were separated by 12% SDS-PAGE, and the membrane was blotted with EEF1E1 antibody diluted at 1:500. HRP-conjugated anti-rabbit IgG antibody was used to detect the primary antibody.





### **Novus Biologicals USA**

10730 E. Briarwood Avenue  
Centennial, CO 80112  
USA  
Phone: 303.730.1950  
Toll Free: 1.888.506.6887  
Fax: 303.730.1966  
nb-customerservice@bio-techne.com

### **Bio-Techne Canada**

21 Canmotor Ave  
Toronto, ON M8Z 4E6  
Canada  
Phone: 905.827.6400  
Toll Free: 855.668.8722  
Fax: 905.827.6402  
canada.inquires@bio-techne.com

### **Bio-Techne Ltd**

19 Barton Lane  
Abingdon Science Park  
Abingdon, OX14 3NB, United Kingdom  
Phone: (44) (0) 1235 529449  
Free Phone: 0800 37 34 15  
Fax: (44) (0) 1235 533420  
info.EMEA@bio-techne.com

### **General Contact Information**

[www.novusbio.com](http://www.novusbio.com)  
Technical Support: nb-technical@bio-techne.com  
Orders: nb-customerservice@bio-techne.com  
General: novus@novusbio.com

### **Products Related to NBP1-32184**

---

|                  |   |
|------------------|---|
| HAF008           | Goat anti-Rabbit IgG Secondary Antibody [HRP]       |
| NB7160           | Goat anti-Rabbit IgG (H+L) Secondary Antibody [HRP] |
| NBP2-24891       | Rabbit IgG Isotype Control                          |
| NBP1-51088-0.1mg | Recombinant Human EEF1E1 His Protein                |

---

### **Limitations**

This product is for research use only and is not approved for use in humans or in clinical diagnosis. Primary Antibodies are guaranteed for 1 year from date of receipt.

For more information on our 100% guarantee, please visit [www.novusbio.com/guarantee](http://www.novusbio.com/guarantee)

Earn gift cards/discounts by submitting a review: [www.novusbio.com/reviews/submit/NBP1-32184](http://www.novusbio.com/reviews/submit/NBP1-32184)

Earn gift cards/discounts by submitting a publication using this product:  
[www.novusbio.com/publications](http://www.novusbio.com/publications)

