

Product Datasheet

Semaphorin 6A Antibody

NBP1-31551

Unit Size: 100 ul

Aliquot and store at -20C or -80C. Avoid freeze-thaw cycles.

www.novusbio.com



technical@novusbio.com

Protocols, Publications, Related Products, Reviews, Research Tools and Images at:
www.novusbio.com/NBP1-31551

Updated 1/18/2022 v.20.1

Earn rewards for product
reviews and publications.

Submit a publication at www.novusbio.com/publications

Submit a review at www.novusbio.com/reviews/destination/NBP1-31551



NBP1-31551

Semaphorin 6A Antibody

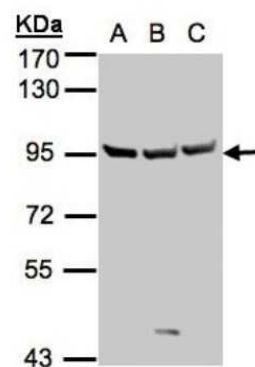
Product Information	
Unit Size	100 ul
Concentration	Concentrations vary lot to lot. See vial label for concentration. If unlisted please contact technical services.
Storage	Aliquot and store at -20C or -80C. Avoid freeze-thaw cycles.
Clonality	Polyclonal
Preservative	0.01% Thimerosal
Isotype	IgG
Purity	Immunogen affinity purified
Buffer	0.1M Tris (pH 7), 0.1M Glycine, 10% Glycerol
Target Molecular Weight	114 kDa

Product Description	
Host	Rabbit
Gene ID	57556
Gene Symbol	SEMA6A
Species	Human, Mouse
Immunogen	Recombinant protein encompassing a sequence within the center region of human SEMA6A. The exact sequence is proprietary.

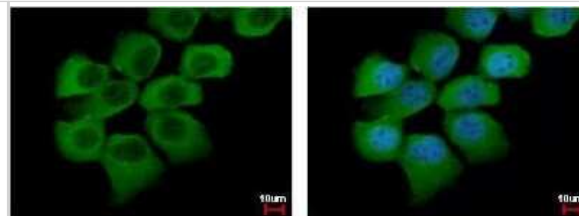
Product Application Details	
Applications	Western Blot, Simple Western, Immunocytochemistry/Immunofluorescence, Immunohistochemistry, Immunohistochemistry-Paraffin
Recommended Dilutions	Western Blot 1:500-1:3000, Simple Western 10 - 15 uL , Immunohistochemistry 1:100-1:1000, Immunocytochemistry/Immunofluorescence 1:100-1:1000, Immunohistochemistry-Paraffin 1:100-1:1000
Application Notes	In Simple Western only 10 - 15 uL of the recommended dilution is used per data point. Separated by Size-Wes, Sally Sue/Peggy Sue.

Images

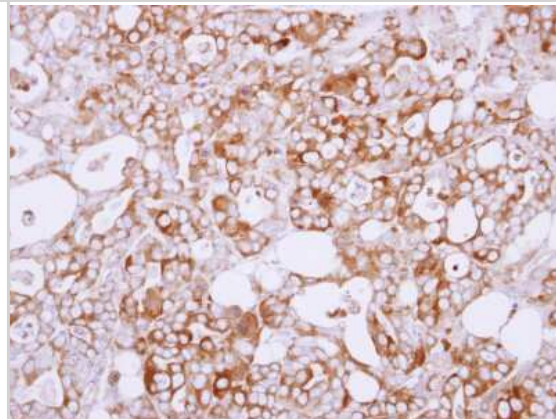
Western Blot: Semaphorin 6A Antibody [NBP1-31551] - Sample(30 ug whole cell lysate) A:A431 B:Hep G2 7.5% SDS PAGE, antibody diluted at 1:1000.



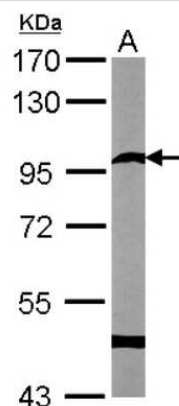
Immunocytochemistry/Immunofluorescence: Semaphorin 6A Antibody [NBP1-31551] - [N2C1], Internal detects SEMA6A protein at cytoplasm by immunofluorescent analysis. Sample: A431 cells were fixed in 4% paraformaldehyde at RT for 15 min. Green: SEMA6A protein stained by SEMA6A antibody [N2C1], Diluted at 1:500. Blue: Hoechst 33342 staining.



Immunohistochemistry-Paraffin: Semaphorin 6A Antibody [NBP1-31551] - Paraffin-embedded NCI-N87 xenograft, using antibody at 1:100 dilution.



Western Blot: Semaphorin 6A Antibody [NBP1-31551] - Sample (50 ug of whole cell lysate) A: Mouse brain 7. 5% SDS PAGE; antibody diluted at 1:1000.



Simple Western: Semaphorin 6A Antibody [NBP1-31551] - Simple Western lane view shows a specific band for Semaphorin 6A in 0.5 mg/ml of A431 lysate. This experiment was performed under reducing conditions using the 12-230 kDa separation system.





Novus Biologicals USA

10730 E. Briarwood Avenue
Centennial, CO 80112
USA
Phone: 303.730.1950
Toll Free: 1.888.506.6887
Fax: 303.730.1966
nb-customerservice@bio-techne.com

Bio-Techne Canada

21 Canmotor Ave
Toronto, ON M8Z 4E6
Canada
Phone: 905.827.6400
Toll Free: 855.668.8722
Fax: 905.827.6402
canada.inquires@bio-techne.com

Bio-Techne Ltd

19 Barton Lane
Abingdon Science Park
Abingdon, OX14 3NB, United Kingdom
Phone: (44) (0) 1235 529449
Free Phone: 0800 37 34 15
Fax: (44) (0) 1235 533420
info.EMEA@bio-techne.com

General Contact Information

www.novusbio.com
Technical Support: nb-technical@bio-techne.com
Orders: nb-customerservice@bio-techne.com
General: novus@novusbio.com

Limitations

This product is for research use only and is not approved for use in humans or in clinical diagnosis. Primary Antibodies are guaranteed for 1 year from date of receipt.

For more information on our 100% guarantee, please visit www.novusbio.com/guarantee

Earn gift cards/discounts by submitting a review: www.novusbio.com/reviews/submit/NBP1-31551

Earn gift cards/discounts by submitting a publication using this product:
www.novusbio.com/publications

