

Product Datasheet

TRACP/PAP/ACP5 Antibody

NBP1-31535

Unit Size: 100 ul

Aliquot and store at -20C or -80C. Avoid freeze-thaw cycles.

www.novusbio.com



technical@novusbio.com

Protocols, Publications, Related Products, Reviews, Research Tools and Images at:
www.novusbio.com/NBP1-31535

Updated 9/9/2021 v.20.1

Earn rewards for product
reviews and publications.

Submit a publication at www.novusbio.com/publications

Submit a review at www.novusbio.com/reviews/destination/NBP1-31535

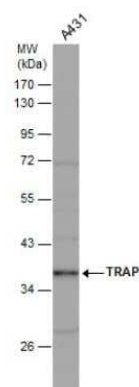


NBP1-31535**TRACP/PAP/ACP5 Antibody**

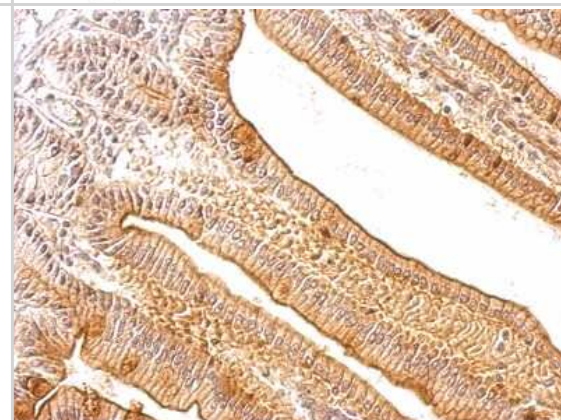
Product Information	
Unit Size	100 ul
Concentration	Concentrations vary lot to lot. See vial label for concentration. If unlisted please contact technical services.
Storage	Aliquot and store at -20C or -80C. Avoid freeze-thaw cycles.
Clonality	Polyclonal
Preservative	0.01% Thimerosal
Isotype	IgG
Purity	Immunogen affinity purified
Buffer	PBS (pH 7), 20% Glycerol, 1% BSA
Target Molecular Weight	37 kDa
Product Description	
Host	Rabbit
Gene ID	54
Gene Symbol	ACP5
Species	Human, Mouse
Reactivity Notes	Rabbit (86%), Sheep (85%), Rat (87%), Pig (86%), Bovine (86%).
Immunogen	Recombinant protein encompassing a sequence within the center region of human TRAP. The exact sequence is proprietary.
Product Application Details	
Applications	Western Blot, Immunocytochemistry/Immunofluorescence, Immunohistochemistry, Immunohistochemistry-Paraffin
Recommended Dilutions	Western Blot 1:500-1:3000, Immunohistochemistry 1:100-1:1000, Immunocytochemistry/Immunofluorescence 1:10 - 1:500, Immunohistochemistry-Paraffin 1:100-1:1000

Images

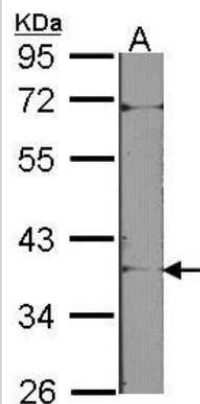
Western Blot: TRACP/PAP/ACP5 Antibody [NBP1-31535] - Whole cell extracts (30 ug) was separated by 10% SDS-PAGE, and the membrane was blotted with TRAP antibody at a dilution of 1:1000. The HRP-conjugated anti-rabbit IgG antibody (NBP2-19301) was used to detect the primary antibody.



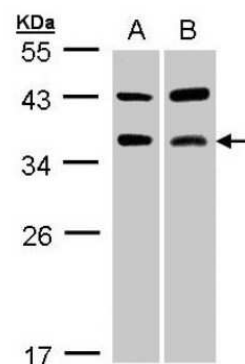
Immunohistochemistry-Paraffin: TRACP/PAP/ACP5 Antibody [NBP1-31535] - Mouse intestine tissue. TRAP antibody dilution: 1:500. Antigen Retrieval: Trilogy™ (EDTA based, pH 8.0) buffer, 15min.



Western Blot: TRACP/PAP/ACP5 Antibody [NBP1-31535] - NIH-3T3, with 10% SDS PAGE, diluted at 1:1000.



Western Blot: TRACP/PAP/ACP5 Antibody [NBP1-31535] - Sample(30 ug whole cell lysate) A:A431 B:MOLT4 12% SDS PAGE, antibody diluted at 1:1000.





Novus Biologicals USA

10730 E. Briarwood Avenue
Centennial, CO 80112
USA
Phone: 303.730.1950
Toll Free: 1.888.506.6887
Fax: 303.730.1966
nb-customerservice@bio-techne.com

Bio-Techne Canada

21 Canmotor Ave
Toronto, ON M8Z 4E6
Canada
Phone: 905.827.6400
Toll Free: 855.668.8722
Fax: 905.827.6402
canada.inquires@bio-techne.com

Bio-Techne Ltd

19 Barton Lane
Abingdon Science Park
Abingdon, OX14 3NB, United Kingdom
Phone: (44) (0) 1235 529449
Free Phone: 0800 37 34 15
Fax: (44) (0) 1235 533420
info.EMEA@bio-techne.com

General Contact Information

www.novusbio.com
Technical Support: nb-technical@bio-techne.com
Orders: nb-customerservice@bio-techne.com
General: novus@novusbio.com

Limitations

This product is for research use only and is not approved for use in humans or in clinical diagnosis. Primary Antibodies are guaranteed for 1 year from date of receipt.

For more information on our 100% guarantee, please visit www.novusbio.com/guarantee

Earn gift cards/discounts by submitting a review: www.novusbio.com/reviews/submit/NBP1-31535

Earn gift cards/discounts by submitting a publication using this product:
www.novusbio.com/publications

