

# Product Datasheet

## **P2X6/P2RX6 Antibody - Azide and BSA Free NBP1-30565**

Unit Size: 0.5 mg

Store at 4C short term. Aliquot and store at -20C long term. Avoid freeze-thaw cycles.

[www.novusbio.com](http://www.novusbio.com)



[technical@novusbio.com](mailto:technical@novusbio.com)

Protocols, Publications, Related Products, Reviews, Research Tools and Images at:  
[www.novusbio.com/NBP1-30565](http://www.novusbio.com/NBP1-30565)

Updated 10/23/2024 v.20.1

**Earn rewards for product  
reviews and publications.**

Submit a publication at [www.novusbio.com/publications](http://www.novusbio.com/publications)

Submit a review at [www.novusbio.com/reviews/destination/NBP1-30565](http://www.novusbio.com/reviews/destination/NBP1-30565)



**NBP1-30565**

P2X6/P2RX6 Antibody - Azide and BSA Free

**Product Information**

<b>Unit Size</b>	0.5 mg
<b>Concentration</b>	LYOPH mg/ml
<b>Storage</b>	Store at 4C short term. Aliquot and store at -20C long term. Avoid freeze-thaw cycles.
<b>Clonality</b>	Polyclonal
<b>Preservative</b>	No Preservative
<b>Reconstitution Instructions</b>	Reconstitute 0.5 mg size in 0.5 ml of sterile water. Centrifuge to remove any insoluble material. Glycerol may be added (1:1) for additional stability. Please note the 0.1 mg size is provided in reconstituted format.
<b>Isotype</b>	IgG
<b>Purity</b>	Ammonium sulfate precipitation
<b>Buffer</b>	Sterilized water

**Product Description**

<b>Host</b>	Rabbit
<b>Gene ID</b>	9127
<b>Gene Symbol</b>	P2RX6
<b>Species</b>	Human, Rat
<b>Immunogen</b>	A synthetic peptide from amino acid region 350-400 of human P2X6/P2RX6 conjugated to an immunogenic carrier protein was used as the antigen. The antigen shares 90% identity with mouse sequence.

**Product Application Details**

<b>Applications</b>	Western Blot, Immunohistochemistry, Immunohistochemistry-Frozen, Immunohistochemistry-Paraffin, Immunohistochemistry Free-Floating
<b>Recommended Dilutions</b>	Western Blot 10-50 ug/ml, Immunohistochemistry 10-50 ug/ml, Immunohistochemistry-Paraffin 10-50 ug/ml, Immunohistochemistry-Frozen 10-50 ug/ml, Immunohistochemistry Free-Floating 10-50 ug/ml

**Images**

Immunohistochemistry Free-Floating: P2X6/P2RX6 Antibody [NBP1-30565] - IHC on rat spinal cord (free floating section) using Rabbit antibody to extracellular domain of P2X6 (P2RX6, P2X purinoceptor 6, ATP receptor, P2RXL1): whole serum at 1 : 300 dilution incubated overnight at room temperature (21C) and developed with DAB/Ni.



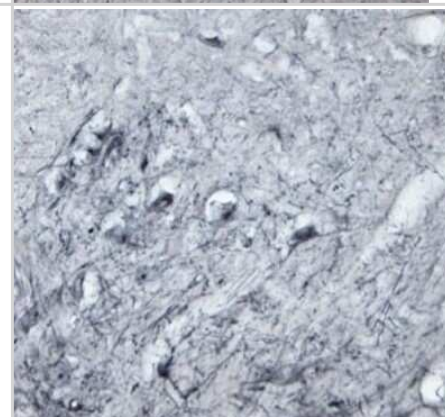
Immunohistochemistry: P2X6/P2RX6 Antibody [NBP1-30565] - IHC on rat spinal cord (free floating section) using Rabbit antibody to extracellular domain of P2X6 (P2RX6, P2X purinoceptor 6, ATP receptor, P2RXL1): whole serum at 1 : 300 dilution incubated overnight at room temperature (21C) and developed with DAB/Ni.



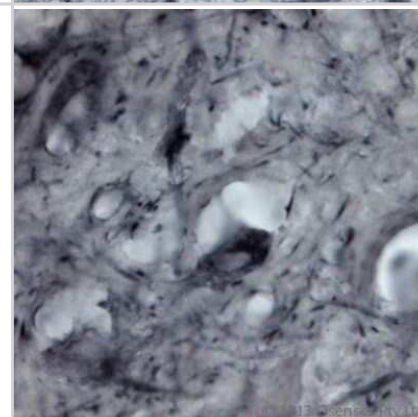
Immunohistochemistry Free-Floating: P2X6/P2RX6 Antibody [NBP1-30565] - IHC on rat spinal cord (free floating section) using Rabbit antibody to extracellular domain of P2X6 (P2RX6, P2X purinoceptor 6, ATP receptor, P2RXL1): whole serum at 1 : 300 dilution incubated overnight at room temperature (21C) and developed with DAB/Ni.



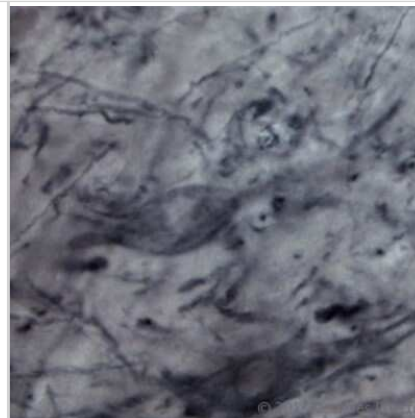
Immunohistochemistry Free-Floating: P2X6/P2RX6 Antibody [NBP1-30565] - IHC on rat spinal cord (free floating section) using Rabbit antibody to extracellular domain of P2X6 (P2RX6, P2X purinoceptor 6, ATP receptor, P2RXL1): whole serum at 1 : 300 dilution incubated overnight at room temperature (21C) and developed with DAB/Ni.



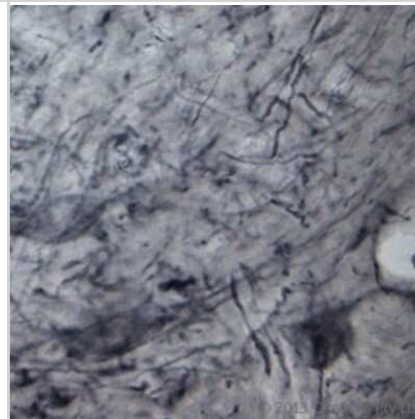
Immunohistochemistry Free-Floating: P2X6/P2RX6 Antibody [NBP1-30565] - IHC on rat spinal cord (free floating section) using Rabbit antibody to extracellular domain of P2X6 (P2RX6, P2X purinoceptor 6, ATP receptor, P2RXL1): whole serum at 1 : 300 dilution incubated overnight at room temperature (21C) and developed with DAB/Ni.



Immunohistochemistry Free-Floating: P2X6/P2RX6 Antibody [NBP1-30565] - IHC on rat spinal cord (free floating section) using Rabbit antibody to extracellular domain of P2X6 (P2RX6, P2X purinoceptor 6, ATP receptor, P2RXL1): whole serum at 1 : 300 dilution incubated overnight at room temperature (21C) and developed with DAB/Ni.



Immunohistochemistry: P2X6/P2RX6 Antibody [NBP1-30565] - IHC on rat spinal cord (free floating section) using Rabbit antibody to extracellular domain of P2X6 (P2RX6, P2X purinoceptor 6, ATP receptor, P2RXL1): whole serum at 1 : 300 dilution incubated overnight at room temperature (21C) and developed with DAB/Ni.





### **Novus Biologicals USA**

10730 E. Briarwood Avenue  
Centennial, CO 80112  
USA  
Phone: 303.730.1950  
Toll Free: 1.888.506.6887  
Fax: 303.730.1966  
nb-customerservice@bio-techne.com

### **Bio-Techne Canada**

21 Canmotor Ave  
Toronto, ON M8Z 4E6  
Canada  
Phone: 905.827.6400  
Toll Free: 855.668.8722  
Fax: 905.827.6402  
canada.inquires@bio-techne.com

### **Bio-Techne Ltd**

19 Barton Lane  
Abingdon Science Park  
Abingdon, OX14 3NB, United Kingdom  
Phone: (44) (0) 1235 529449  
Free Phone: 0800 37 34 15  
Fax: (44) (0) 1235 533420  
info.EMEA@bio-techne.com

### **General Contact Information**

www.novusbio.com  
Technical Support: nb-technical@bio-  
techne.com  
Orders: nb-customerservice@bio-techne.com  
General: novus@novusbio.com

### **Products Related to NBP1-30565**

---

HAF008	Goat anti-Rabbit IgG Secondary Antibody [HRP]
NB7160	Goat anti-Rabbit IgG (H+L) Secondary Antibody [HRP]
NBP2-24891	Rabbit IgG Isotype Control
NBP2-48583PEP	P2X6/P2RX6 Recombinant Protein Antigen

---

### **Limitations**

This product is for research use only and is not approved for use in humans or in clinical diagnosis. Primary Antibodies are guaranteed for 1 year from date of receipt.

For more information on our 100% guarantee, please visit [www.novusbio.com/guarantee](http://www.novusbio.com/guarantee)

Earn gift cards/discounts by submitting a review: [www.novusbio.com/reviews/submit/NBP1-30565](http://www.novusbio.com/reviews/submit/NBP1-30565)

Earn gift cards/discounts by submitting a publication using this product:  
[www.novusbio.com/publications](http://www.novusbio.com/publications)

