

Product Datasheet

LIN-28A Antibody (6D1F9)

NBP1-28865

Unit Size: 0.1 ml

Store at 4C short term. Aliquot and store at -20C long term. Avoid freeze-thaw cycles.

www.novusbio.com



technical@novusbio.com

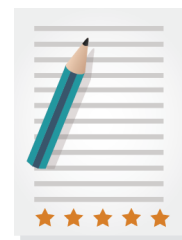
Protocols, Publications, Related Products, Reviews, Research Tools and Images at:
www.novusbio.com/NBP1-28865

Updated 10/14/2021 v.20.1

Earn rewards for product
reviews and publications.

Submit a publication at www.novusbio.com/publications

Submit a review at www.novusbio.com/reviews/destination/NBP1-28865



NBP1-28865

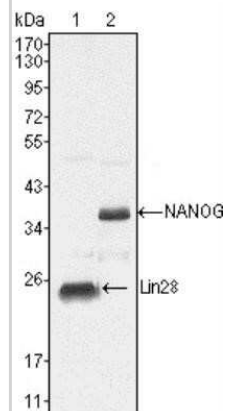
LIN-28A Antibody (6D1F9)

Product Information	
Unit Size	0.1 ml
Concentration	This product is unpurified. The exact concentration of antibody is not quantifiable.
Storage	Store at 4C short term. Aliquot and store at -20C long term. Avoid freeze-thaw cycles.
Clonality	Monoclonal
Clone	6D1F9
Preservative	0.03% Sodium Azide
Isotype	IgG1
Purity	Unpurified
Buffer	10mM Phosphate (pH 7.4)
Target Molecular Weight	23 kDa
Product Description	
Host	Mouse
Gene ID	79727
Gene Symbol	LIN28A
Species	Human
Marker	Undifferentiated human embryonic stem cell Marker
Immunogen	Purified recombinant fragment of LIN28 (aa93-209) expressed in E. Coli.
Product Application Details	
Applications	Western Blot, ELISA, Immunocytochemistry/ Immunofluorescence
Recommended Dilutions	Western Blot 1:500 - 1:2000, ELISA 1:10000, Immunocytochemistry/ Immunofluorescence 1:200 - 1:1000

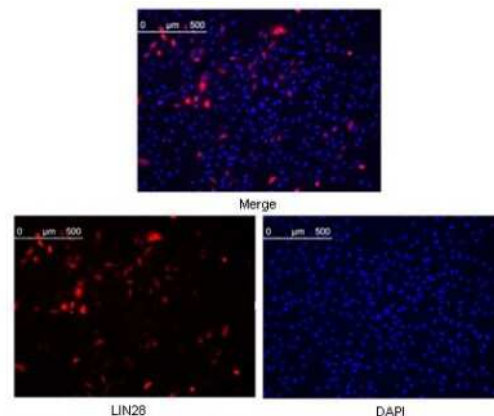


Images

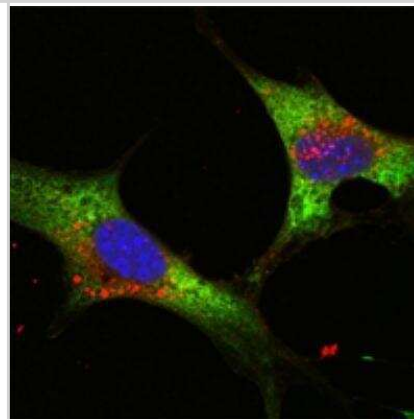
Western Blot: LIN-28A Antibody (6D1F9) [NBP1-28865] - Analysis using LIN28 mouse mAb against NTERA-2 cell lysate (1).



Immunocytochemistry/Immunofluorescence: LIN-28A Antibody (6D1F9) [NBP1-28865] - Analysis of methanol fixed HeLa cells were transfected with pMX construct of human LIN28, cells were analyzed ~62 hours after transfection.



Immunocytochemistry/Immunofluorescence: LIN-28A Antibody (6D1F9) [NBP1-28865] - Analysis of NTERA-2 cells using LIN28 mouse mAb (green). Blue: DRAQ5 fluorescent DNA dye.





Novus Biologicals USA

10730 E. Briarwood Avenue
Centennial, CO 80112
USA
Phone: 303.730.1950
Toll Free: 1.888.506.6887
Fax: 303.730.1966
nb-customerservice@bio-techne.com

Bio-Techne Canada

21 Canmotor Ave
Toronto, ON M8Z 4E6
Canada
Phone: 905.827.6400
Toll Free: 855.668.8722
Fax: 905.827.6402
canada.inquires@bio-techne.com

Bio-Techne Ltd

19 Barton Lane
Abingdon Science Park
Abingdon, OX14 3NB, United Kingdom
Phone: (44) (0) 1235 529449
Free Phone: 0800 37 34 15
Fax: (44) (0) 1235 533420
info.EMEA@bio-techne.com

General Contact Information

www.novusbio.com
Technical Support: nb-technical@bio-techne.com
Orders: nb-customerservice@bio-techne.com
General: novus@novusbio.com

Limitations

This product is for research use only and is not approved for use in humans or in clinical diagnosis. Primary Antibodies are guaranteed for 1 year from date of receipt.

For more information on our 100% guarantee, please visit www.novusbio.com/guarantee

Earn gift cards/discounts by submitting a review: www.novusbio.com/reviews/submit/NBP1-28865

Earn gift cards/discounts by submitting a publication using this product:
www.novusbio.com/publications

