

Product Datasheet

Ataxin 1 Antibody NBP1-28734

Unit Size: 0.1 ml

Store at 4C. Do not freeze.

www.novusbio.com



technical@novusbio.com

Protocols, Publications, Related Products, Reviews, Research Tools and Images at:
www.novusbio.com/NBP1-28734

Updated 5/3/2022 v.20.1

Earn rewards for product
reviews and publications.

Submit a publication at www.novusbio.com/publications

Submit a review at www.novusbio.com/reviews/destination/NBP1-28734



NBP1-28734**Ataxin 1 Antibody****Product Information**

Unit Size	0.1 ml
Concentration	0.2 mg/ml
Storage	Store at 4C. Do not freeze.
Clonality	Polyclonal
Preservative	0.09% Sodium Azide
Isotype	IgG
Purity	Immunogen affinity purified
Buffer	TBS and 0.1% BSA

Product Description

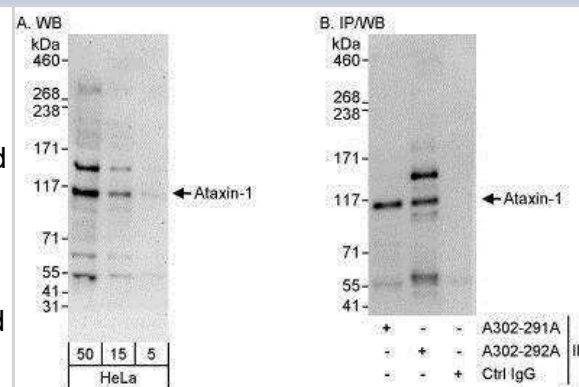
Host	Rabbit
Gene ID	6310
Gene Symbol	ATXN1
Species	Human
Reactivity Notes	Based on 100% sequence identity, this antibody is predicted to react with Panda, Rhesus Monkey, Gorilla, Chimpanzee, White-tufted-ear marmoset, Crab-eating macaque, African elephant and Northern white-cheeked gibbon.
Immunogen	The immunogen recognized by this antibody maps to a region between residue 766 and 816 of human ataxin-1 using the numbering given in entry NP_000323.2 (GeneID 6310).

Product Application Details

Applications	Western Blot, Immunoprecipitation
Recommended Dilutions	Western Blot 1:2000-1:10000, Immunoprecipitation 1:10-1:500
Application Notes	This antibody is useful for western blot and immunoprecipitation.

Images

Western Blot: Ataxin 1 Antibody [NBP1-28734] - Detection of Human Ataxin-1 by Western Blot and Immunoprecipitation. Samples: Whole cell lysate (5, 15 and 50 mcg for WB; 1 mg for IP, 20% of IP loaded) from HeLa cells. Antibodies: Affinity purified rabbit anti-Ataxin-1 antibody NBP1-28734 used for WB at 0.04 mcg/ml (A) and 1 mcg/ml (B) and used for IP at 10 mcg/mg lysate. Ataxin-1 was also immunoprecipitated by rabbit anti-Ataxin-1 antibody NBP1-28690, which recognizes an upstream epitope. For blotting immunoprecipitated Ataxin-1, the ReliaBLOT (RESTRICTED) Reagents and Procedures were used. Detection: Chemiluminescence with exposure times of 3 minutes (A) and 3 seconds (B).





Novus Biologicals USA

10730 E. Briarwood Avenue
Centennial, CO 80112
USA
Phone: 303.730.1950
Toll Free: 1.888.506.6887
Fax: 303.730.1966
nb-customerservice@bio-techne.com

Bio-Techne Canada

21 Canmotor Ave
Toronto, ON M8Z 4E6
Canada
Phone: 905.827.6400
Toll Free: 855.668.8722
Fax: 905.827.6402
canada.inquires@bio-techne.com

Bio-Techne Ltd

19 Barton Lane
Abingdon Science Park
Abingdon, OX14 3NB, United Kingdom
Phone: (44) (0) 1235 529449
Free Phone: 0800 37 34 15
Fax: (44) (0) 1235 533420
info.EMEA@bio-techne.com

General Contact Information

www.novusbio.com
Technical Support: nb-technical@bio-techne.com
Orders: nb-customerservice@bio-techne.com
General: novus@novusbio.com

Limitations

This product is for research use only and is not approved for use in humans or in clinical diagnosis. Primary Antibodies are guaranteed for 1 year from date of receipt.

For more information on our 100% guarantee, please visit www.novusbio.com/guarantee

Earn gift cards/discounts by submitting a review: www.novusbio.com/reviews/submit/NBP1-28734

Earn gift cards/discounts by submitting a publication using this product:
www.novusbio.com/publications

