

Product Datasheet

MAT2A Antibody (3A2) - BSA Free NBP1-28605

Unit Size: 0.1 ml

Store at 4C short term. Aliquot and store at -20C long term. Avoid freeze-thaw cycles.

www.novusbio.com



technical@novusbio.com

Publications: 2

Protocols, Publications, Related Products, Reviews, Research Tools and Images at:
www.novusbio.com/NBP1-28605

Updated 10/23/2024 v.20.1

Earn rewards for product
reviews and publications.

Submit a publication at www.novusbio.com/publications

Submit a review at www.novusbio.com/reviews/destination/NBP1-28605



NBP1-28605

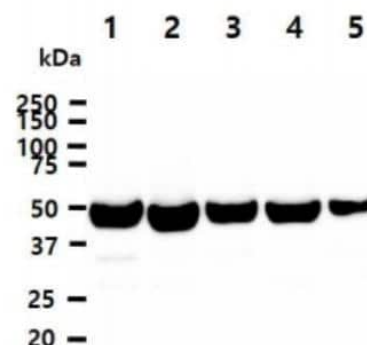
MAT2A Antibody (3A2) - BSA Free

Product Information	
Unit Size	0.1 ml
Concentration	1.0 mg/ml
Storage	Store at 4C short term. Aliquot and store at -20C long term. Avoid freeze-thaw cycles.
Clonality	Monoclonal
Clone	3A2
Preservative	0.02% Sodium Azide
Isotype	IgG2b Kappa
Purity	Protein G purified
Buffer	PBS (pH 7.4), 10% Glycerol
Target Molecular Weight	44 kDa
Product Description	
Host	Mouse
Gene ID	4144
Gene Symbol	MAT2A
Species	Human
Immunogen	Recombinant human MAT2A (1-395aa) purified from E. coli (NP_005902).
Product Application Details	
Applications	Western Blot, ELISA, Immunocytochemistry/ Immunofluorescence, Immunohistochemistry, Immunohistochemistry-Paraffin
Recommended Dilutions	Western Blot 1:1000-1:2000, ELISA 1:100-1:2000, Immunohistochemistry 1:10-1:500, Immunocytochemistry/ Immunofluorescence, Immunohistochemistry-Paraffin 1:50

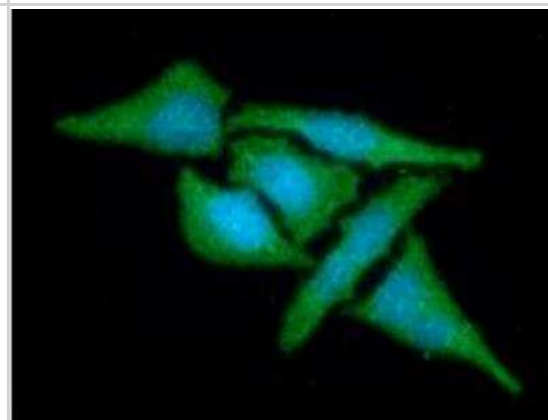


Images

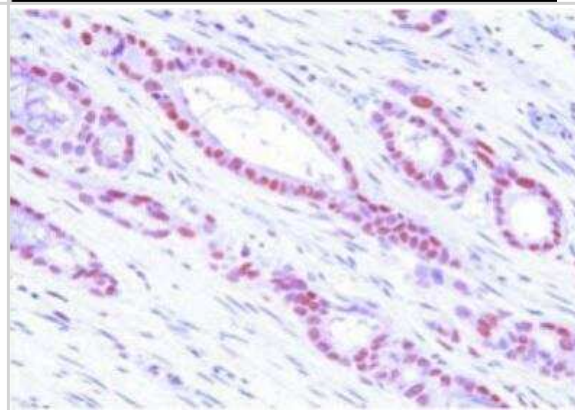
Western Blot: MAT2A Antibody (3A2) [NBP1-28605] - The Cell lysates (40ug) were resolved by SDS-PAGE, transferred to PVDF membrane and probed with anti-human MAT2A antibody (1:1000). Proteins were visualized using a goat anti-mouse secondary antibody conjugated to HRP and an ECL detection system. Lane 1. : HeLa cell lysate Lane 2. : Ramos cell lysate Lane 3. : 293T cell lysate Lane 4. : Jurkat cell lysate Lane 5. : NIH-3T3 cell lysate



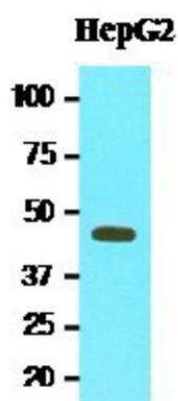
Immunocytochemistry/Immunofluorescence: MAT2A Antibody (3A2) [NBP1-28605] - Analysis of MAT2A in HeLa cells line, stained with DAPI (Blue) for nucleus staining and monoclonal anti-human MAT2A antibody (1:100) with goat anti-mouse IgG-Alexa fluor 488 conjugate (Green).



Immunohistochemistry-Paraffin: MAT2A Antibody (3A2) [NBP1-28605] - Human MAT2A (1:50) for 2 hours at room temperature. Antigen retrieval was performed in 0.1M sodium citrate buffer and detected using Diaminobenzidine (DAB).



Western Blot: MAT2A Antibody (3A2) [NBP1-28605] - Cell lysates of HepG2 (20ug) were resolved by SDS-PAGE, transferred to NC membrane and probed with anti-human MAT2A (1:1000). Proteins were visualized using a goat anti-mouse secondary antibody conjugated to HRP and an ECL detection system.



Publications

Phuong NT, Kim SK, Im JH et al. Induction of methionine adenosyltransferase 2A in tamoxifen-resistant breast cancer cells. *Oncotarget* 2016-03-22 [PMID: 26418898] (WB)

Rho JH, Lampe PD. High-throughput screening for native autoantigen-autoantibody complexes using antibody microarrays *J Proteome Res.* 2013-05-03 [PMID: 23541305] (Human)

Details:

A novel method using antibody microarrays is used to detect autoantibody-antigen complexes that can potentially be useful for detection and characterization of diseases.





Novus Biologicals USA

10730 E. Briarwood Avenue
Centennial, CO 80112
USA
Phone: 303.730.1950
Toll Free: 1.888.506.6887
Fax: 303.730.1966
nb-customerservice@bio-techne.com

Bio-Techne Canada

21 Canmotor Ave
Toronto, ON M8Z 4E6
Canada
Phone: 905.827.6400
Toll Free: 855.668.8722
Fax: 905.827.6402
canada.inquires@bio-techne.com

Bio-Techne Ltd

19 Barton Lane
Abingdon Science Park
Abingdon, OX14 3NB, United Kingdom
Phone: (44) (0) 1235 529449
Free Phone: 0800 37 34 15
Fax: (44) (0) 1235 533420
info.EMEA@bio-techne.com

General Contact Information

www.novusbio.com
Technical Support: nb-technical@bio-techne.com
Orders: nb-customerservice@bio-techne.com
General: novus@novusbio.com

Products Related to NBP1-28605

NBP1-42569	HepG2 Whole Cell Lysate
HAF007	Goat anti-Mouse IgG Secondary Antibody [HRP]
NB720-B	Rabbit anti-Mouse IgG (H+L) Secondary Antibody [Biotin]
NBP1-43317-0.5mg	Mouse IgG2b Kappa Light Chain Isotype Control (MG2b)

Limitations

This product is for research use only and is not approved for use in humans or in clinical diagnosis. Primary Antibodies are guaranteed for 1 year from date of receipt.

For more information on our 100% guarantee, please visit www.novusbio.com/guarantee

Earn gift cards/discounts by submitting a review: www.novusbio.com/reviews/submit/NBP1-28605

Earn gift cards/discounts by submitting a publication using this product:
www.novusbio.com/publications

