

Product Datasheet

Integrin beta 3/CD61 Antibody (PM6/13) - Azide and BSA Free NBP1-28398

Unit Size: 0.1 mg

Store at 4C. Do not freeze.

www.novusbio.com



technical@novusbio.com

Publications: 2

Protocols, Publications, Related Products, Reviews, Research Tools and Images at:
www.novusbio.com/NBP1-28398

Updated 2/21/2025 v.20.1

Earn rewards for product reviews and publications.

Submit a publication at www.novusbio.com/publications

Submit a review at www.novusbio.com/reviews/destination/NBP1-28398



NBP1-28398

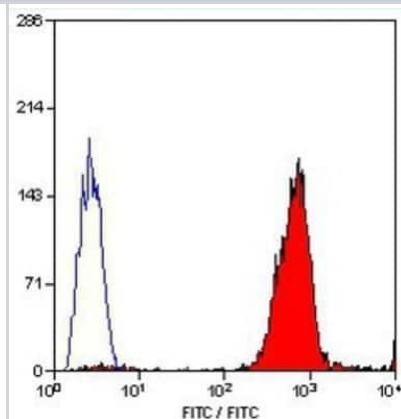
Integrin beta 3/CD61 Antibody (PM6/13) - Azide and BSA Free

Product Information	
Unit Size	0.1 mg
Concentration	0.1 mg/ml
Storage	Store at 4C. Do not freeze.
Clonality	Monoclonal
Clone	PM6/13
Preservative	No Preservative
Isotype	IgG1 Kappa
Purity	Protein A or G purified
Buffer	BBS (pH 8.2)
Product Description	
Host	Mouse
Gene ID	3690
Gene Symbol	ITGB3
Species	Human
Specificity/Sensitivity	Human CD61
Immunogen	Human platelet plasma membrane
Product Application Details	
Applications	Flow Cytometry, Block/Neutralize
Recommended Dilutions	Flow Cytometry $\leq 1 \text{ ug}/10^6 \text{ cells}$, Block/Neutralize Reactivity reported in (PMID: 24965524)

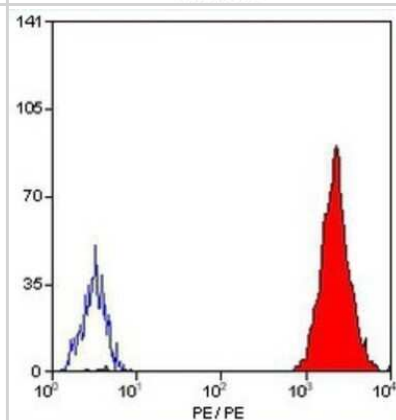


Images

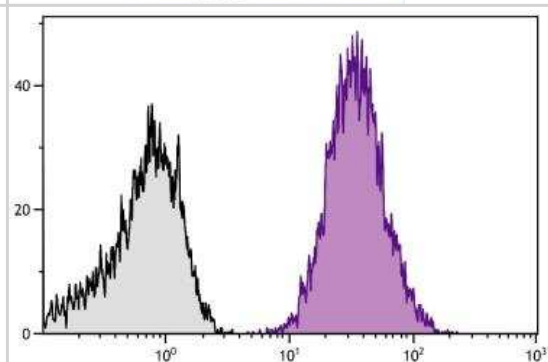
Flow Cytometry: Integrin beta 3/CD61 Antibody (PM6/13) [NBP1-28398]
- Analysis using the FITC conjugate of NBP1-28398. Staining of human peripheral blood platelets.



Flow Cytometry: Integrin beta 3/CD61 Antibody (PM6/13) [NBP1-28398]
- Staining of human peripheral blood platelets with MOUSE ANTI HUMAN CD61: RPE.



Flow Cytometry: Integrin beta 3/CD61 Antibody (PM6/13) [NBP1-28398]
- Human platelets were stained with Mouse Anti-Human CD61-PE.



Publications

Mahmud J, Miller MJ, Altman AM, Chan GC Human Cytomegalovirus Glycoprotein-Initiated Signaling Mediates the Aberrant Activation of Akt J. Virol. 2020-06-03 [PMID: 32493823]

Dotterweich J, Ebert R, Kraus S et al. Mesenchymal stem cell contact promotes CCN1 splicing and transcription in myeloma cells Cell Commun. Signal. 2014-07-04 [PMID: 24965524] (B/N, Human)

Details:

Integrin beta 3 antibody antibody used for blocking experiments on human myeloma cell line INA-6 (data not shown in publication).



Novus Biologicals USA

10730 E. Briarwood Avenue
Centennial, CO 80112
USA
Phone: 303.730.1950
Toll Free: 1.888.506.6887
Fax: 303.730.1966
nb-customerservice@bio-techne.com

Bio-Techne Canada

21 Canmotor Ave
Toronto, ON M8Z 4E6
Canada
Phone: 905.827.6400
Toll Free: 855.668.8722
Fax: 905.827.6402
canada.inquires@bio-techne.com

Bio-Techne Ltd

19 Barton Lane
Abingdon Science Park
Abingdon, OX14 3NB, United Kingdom
Phone: (44) (0) 1235 529449
Free Phone: 0800 37 34 15
Fax: (44) (0) 1235 533420
info.EMEA@bio-techne.com

General Contact Information

www.novusbio.com
Technical Support: nb-technical@bio-techne.com
Orders: nb-customerservice@bio-techne.com
General: novus@novusbio.com

Products Related to NBP1-28398

HAF007	Goat anti-Mouse IgG Secondary Antibody [HRP]
NB720-B	Rabbit anti-Mouse IgG (H+L) Secondary Antibody [Biotin]
NBP1-43319-0.5mg	Mouse IgG1 Kappa Isotype Control (P3.6.2.8.1)
210-TA-005	TNF-alpha [Unconjugated]

Limitations

This product is for research use only and is not approved for use in humans or in clinical diagnosis. Primary Antibodies are guaranteed for 1 year from date of receipt.

For more information on our 100% guarantee, please visit www.novusbio.com/guarantee

Earn gift cards/discounts by submitting a review: www.novusbio.com/reviews/submit/NBP1-28398

Earn gift cards/discounts by submitting a publication using this product:
www.novusbio.com/publications

