

Product Datasheet

MCAM/CD146 Antibody (c264) [FITC] NBP1-28332

Unit Size: 0.25 mg

Store at 4C. Do not freeze.

www.novusbio.com



technical@novusbio.com

Protocols, Publications, Related Products, Reviews, Research Tools and Images at:
www.novusbio.com/NBP1-28332

Updated 10/23/2024 v.20.1

Earn rewards for product
reviews and publications.

Submit a publication at www.novusbio.com/publications

Submit a review at www.novusbio.com/reviews/destination/NBP1-28332



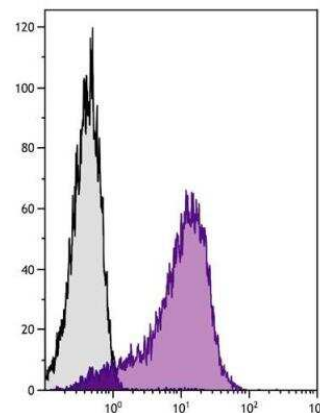
NBP1-28332

MCAM/CD146 Antibody (c264) [FITC]

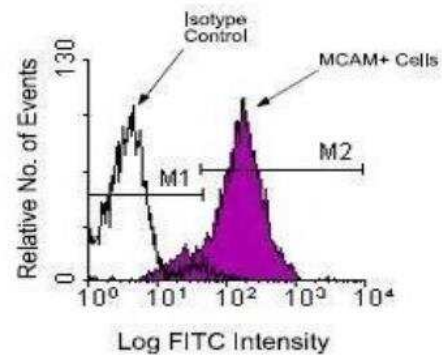
Product Information	
Unit Size	0.25 mg
Concentration	Please see the vial label for concentration. If unlisted please contact technical services.
Storage	Store at 4C. Do not freeze.
Clonality	Monoclonal
Clone	c264
Preservative	0.05% Sodium Azide
Isotype	IgG2b Kappa
Conjugate	FITC
Purity	Protein A or G purified
Buffer	PBS
Product Description	
Host	Mouse
Gene ID	4162
Gene Symbol	MCAM
Species	Chicken, Turkey
Reactivity Notes	Chicken
Specificity/Sensitivity	Chicken MCAM, Mr 98 kDa (protein core approx. 84 kDa)
Immunogen	Mixture of E15 and E16 thymocytes from H.B15, H.B19, and H.B21 chicken embryos
Notes	Protect conjugated forms from light.

Images

Flow Cytometry: MCAM/CD146 Antibody (c264) [FITC] [NBP1-28332] - Chicken thymocytes were stained with Mouse Anti-Chicken MCAM-UNLB followed by Goat Anti-Mouse IgG2b, Human ads-PE .



Flow Cytometry: MCAM/CD146 Antibody (c264) [FITC] [NBP1-28332] - Thymocytes from a young chicken were isolated and incubated with purified mouse anti-chicken MCAM MAb. The cells were then stained with goat anti-mouse IgG2b-FITC and analyzed by flow cytometry (BDB, San Jose, CA).





Novus Biologicals USA

10730 E. Briarwood Avenue
Centennial, CO 80112
USA
Phone: 303.730.1950
Toll Free: 1.888.506.6887
Fax: 303.730.1966
nb-customerservice@bio-techne.com

Bio-Techne Canada

21 Canmotor Ave
Toronto, ON M8Z 4E6
Canada
Phone: 905.827.6400
Toll Free: 855.668.8722
Fax: 905.827.6402
canada.inquires@bio-techne.com

Bio-Techne Ltd

19 Barton Lane
Abingdon Science Park
Abingdon, OX14 3NB, United Kingdom
Phone: (44) (0) 1235 529449
Free Phone: 0800 37 34 15
Fax: (44) (0) 1235 533420
info.EMEA@bio-techne.com

General Contact Information

www.novusbio.com
Technical Support: nb-technical@bio-
techne.com
Orders: nb-customerservice@bio-techne.com
General: novus@novusbio.com

Limitations

This product is for research use only and is not approved for use in humans or in clinical diagnosis. Primary Antibodies are guaranteed for 1 year from date of receipt.

For more information on our 100% guarantee, please visit www.novusbio.com/guarantee

Earn gift cards/discounts by submitting a review: www.novusbio.com/reviews/submit/NBP1-28332

Earn gift cards/discounts by submitting a publication using this product:
www.novusbio.com/publications

