

# Product Datasheet

## CD45 Antibody (LT40) NBP1-28295

Unit Size: 0.25 mg

Store at 4C. Do not freeze.

[www.novusbio.com](http://www.novusbio.com)



[technical@novusbio.com](mailto:technical@novusbio.com)

Protocols, Publications, Related Products, Reviews, Research Tools and Images at:  
[www.novusbio.com/NBP1-28295](http://www.novusbio.com/NBP1-28295)

Updated 7/17/2023 v.20.1

Earn rewards for product  
reviews and publications.

Submit a publication at [www.novusbio.com/publications](http://www.novusbio.com/publications)

Submit a review at [www.novusbio.com/reviews/destination/NBP1-28295](http://www.novusbio.com/reviews/destination/NBP1-28295)



**NBP1-28295**

CD45 Antibody (LT40)

Product Information	
Unit Size	0.25 mg
Concentration	0.5 mg/ml
Storage	Store at 4C. Do not freeze.
Clonality	Monoclonal
Clone	LT40
Preservative	No Preservative
Isotype	IgM Kappa
Purity	IgM purified
Buffer	BBS (pH 8.2)
Target Molecular Weight	139 kDa

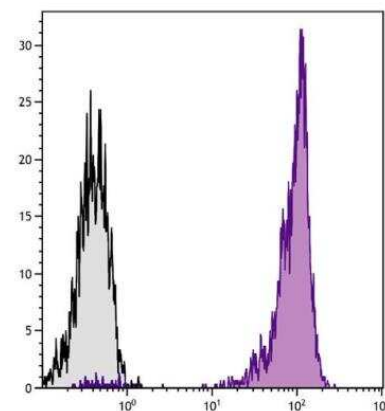
Product Description	
Host	Mouse
Gene ID	5788
Gene Symbol	PTPRC
Species	Chicken
Specificity/Sensitivity	CD45 Antibody (LT40) is specific to Chicken CD45 (Mr 190 to 215-kDa).
Immunogen	This CD45 Antibody (LT40) was prepared from Chicken bursal lymphocytes.

Product Application Details	
Applications	Flow Cytometry
Recommended Dilutions	Flow Cytometry

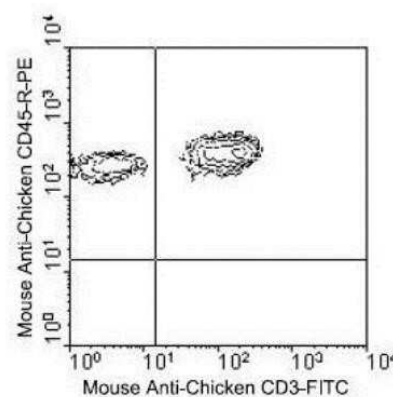


## Images

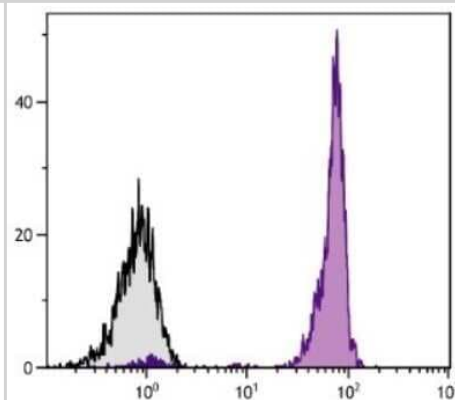
Flow Cytometry: CD45 Antibody (LT40) [NBP1-28295] - Chicken peripheral blood lymphocytes were stained with Mouse Anti-Chicken CD45 antibody (LT40) UNLB followed by Goat Anti-Mouse IgM, Human ads-FITC.



Flow Cytometry: CD45 Antibody (LT40) [NBP1-28295] - Chicken thymocytes were double-stained with R: PE labeled mouse anti-chicken CD45 antibody (LT40) [NBP1-28295] and mouse anti-chicken CD3: FITC. Small lymphocytes were then gated and analyzed by flow cytometer.



Flow Cytometry: CD45 Antibody (LT40) [NBP1-28295] - Analysis using the PE conjugate of CD45 antibody (LT40) [NBP1-28295]. Staining of peripheral blood mononuclear cells.





### **Novus Biologicals USA**

10730 E. Briarwood Avenue  
Centennial, CO 80112  
USA  
Phone: 303.730.1950  
Toll Free: 1.888.506.6887  
Fax: 303.730.1966  
nb-customerservice@bio-techne.com

### **Bio-Techne Canada**

21 Canmotor Ave  
Toronto, ON M8Z 4E6  
Canada  
Phone: 905.827.6400  
Toll Free: 855.668.8722  
Fax: 905.827.6402  
canada.inquires@bio-techne.com

### **Bio-Techne Ltd**

19 Barton Lane  
Abingdon Science Park  
Abingdon, OX14 3NB, United Kingdom  
Phone: (44) (0) 1235 529449  
Free Phone: 0800 37 34 15  
Fax: (44) (0) 1235 533420  
info.EMEA@bio-techne.com

### **General Contact Information**

www.novusbio.com  
Technical Support: nb-technical@bio-  
techne.com  
Orders: nb-customerservice@bio-techne.com  
General: novus@novusbio.com

### **Limitations**

This product is for research use only and is not approved for use in humans or in clinical diagnosis. Primary Antibodies are guaranteed for 1 year from date of receipt.

For more information on our 100% guarantee, please visit [www.novusbio.com/guarantee](http://www.novusbio.com/guarantee)

Earn gift cards/discounts by submitting a review: [www.novusbio.com/reviews/submit/NBP1-28295](http://www.novusbio.com/reviews/submit/NBP1-28295)

Earn gift cards/discounts by submitting a publication using this product:  
[www.novusbio.com/publications](http://www.novusbio.com/publications)

