

Product Datasheet

KLRC1/2/3 Antibody (20d5) [FITC] NBP1-28101

Unit Size: 0.25 mg

Store at 4C. Do not freeze.

www.novusbio.com



technical@novusbio.com

Protocols, Publications, Related Products, Reviews, Research Tools and Images at:
www.novusbio.com/NBP1-28101

Updated 10/23/2024 v.20.1

Earn rewards for product
reviews and publications.

Submit a publication at www.novusbio.com/publications

Submit a review at www.novusbio.com/reviews/destination/NBP1-28101



NBP1-28101**KLRC1/2/3 Antibody (20d5) [FITC]**

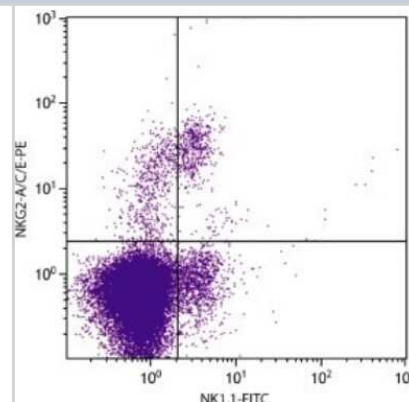
Product Information	
Unit Size	0.25 mg
Concentration	Please see the vial label for concentration. If unlisted please contact technical services.
Storage	Store at 4C. Do not freeze.
Clonality	Monoclonal
Clone	20d5
Preservative	0.05% Sodium Azide
Isotype	IgG2a Kappa
Conjugate	FITC
Purity	Protein A or G purified
Buffer	PBS

Product Description	
Host	Rat
Gene ID	3821
Gene Symbol	KLRC1
Species	Mouse
Reactivity Notes	Mouse.
Specificity/Sensitivity	Mouse NKG2 (Mr approx. 43 kDa)
Immunogen	CHO cells transfected with B6 allele of NKG2A gene
Notes	Protect conjugated forms from light.

Product Application Details	
Applications	Flow Cytometry
Recommended Dilutions	Flow Cytometry

Images

Flow Cytometry: KLRC1/2/3 Antibody (20d5) [FITC] [NBP1-28101] - Analysis of C57BL/6 splenocytes by multiple staining.





Novus Biologicals USA

10730 E. Briarwood Avenue
Centennial, CO 80112
USA
Phone: 303.730.1950
Toll Free: 1.888.506.6887
Fax: 303.730.1966
nb-customerservice@bio-techne.com

Bio-Techne Canada

21 Canmotor Ave
Toronto, ON M8Z 4E6
Canada
Phone: 905.827.6400
Toll Free: 855.668.8722
Fax: 905.827.6402
canada.inquires@bio-techne.com

Bio-Techne Ltd

19 Barton Lane
Abingdon Science Park
Abingdon, OX14 3NB, United Kingdom
Phone: (44) (0) 1235 529449
Free Phone: 0800 37 34 15
Fax: (44) (0) 1235 533420
info.EMEA@bio-techne.com

General Contact Information

www.novusbio.com
Technical Support: nb-technical@bio-techne.com
Orders: nb-customerservice@bio-techne.com
General: novus@novusbio.com

Products Related to NBP1-28101

NBP1-43959-0.1mg	Rat IgG2a Kappa Light Chain Isotype Control (R2a) [FITC]
NBP1-28100PE	KLRC1/2/3 Antibody (20d5) [PE]
285-IF-100	IFN-gamma [Unconjugated]
202-IL-010	IL-2 [Unconjugated]

Limitations

This product is for research use only and is not approved for use in humans or in clinical diagnosis. Primary Antibodies are guaranteed for 1 year from date of receipt.

For more information on our 100% guarantee, please visit www.novusbio.com/guarantee

Earn gift cards/discounts by submitting a review: www.novusbio.com/reviews/submit/NBP1-28101

Earn gift cards/discounts by submitting a publication using this product:
www.novusbio.com/publications

