

# Product Datasheet

## KLRC1/2/3 Antibody (20d5) - Azide and BSA Free NBP1-28100

Unit Size: 0.25 mg

Store at 4C. Do not freeze.

[www.novusbio.com](http://www.novusbio.com)



[technical@novusbio.com](mailto:technical@novusbio.com)

### Publications: 1

Protocols, Publications, Related Products, Reviews, Research Tools and Images at:  
[www.novusbio.com/NBP1-28100](http://www.novusbio.com/NBP1-28100)

Updated 4/4/2022 v.20.1

Earn rewards for product  
reviews and publications.

Submit a publication at [www.novusbio.com/publications](http://www.novusbio.com/publications)

Submit a review at [www.novusbio.com/reviews/destination/NBP1-28100](http://www.novusbio.com/reviews/destination/NBP1-28100)



**NBP1-28100**

KLRC1/2/3 Antibody (20d5) - Azide and BSA Free

**Product Information**

<b>Unit Size</b>	0.25 mg
<b>Concentration</b>	0.5 mg/ml
<b>Storage</b>	Store at 4C. Do not freeze.
<b>Clonality</b>	Monoclonal
<b>Clone</b>	20d5
<b>Preservative</b>	No Preservative
<b>Isotype</b>	IgG2a Kappa
<b>Purity</b>	Protein A or G purified
<b>Buffer</b>	0.1M BBS (pH 8.2)

**Product Description**

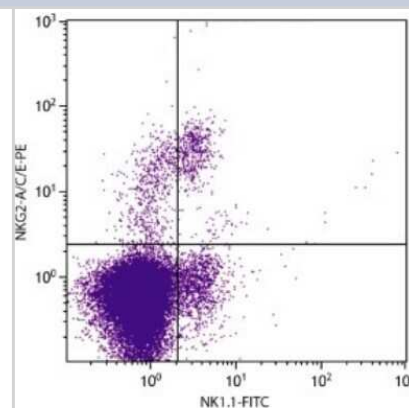
<b>Host</b>	Rat
<b>Gene ID</b>	3821
<b>Gene Symbol</b>	KLRC1
<b>Species</b>	Mouse
<b>Reactivity Notes</b>	Mouse.
<b>Specificity/Sensitivity</b>	Mouse NKG2 (Mr approx. 43 kDa)
<b>Immunogen</b>	CHO cells transfected with B6 allele of NKG2A gene

**Product Application Details**

<b>Applications</b>	Flow Cytometry
<b>Recommended Dilutions</b>	Flow Cytometry &lt;= 1 ug/10 <sup>6</sup> cells

**Images**

Flow Cytometry: KLRC1/2/3 Antibody (20d5) [NBP1-28100] - Analysis using the FITC conjugate of NBP1-28100. Multiple staining of C57BL/6 splenocytes.

**Publications**

Webb ER, Moreno-Vincente J, Easton A Et al. Cyclophosphamide depletes tumor infiltrating T regulatory cells and combined with anti-PD-1 therapy improves survival in murine neuroblastoma iScience 2022-09-13 [PMID: 36097618] (FLOW, Mouse)

Details:

Citation using the PE version of this antibody.



### **Novus Biologicals USA**

10730 E. Briarwood Avenue  
Centennial, CO 80112  
USA  
Phone: 303.730.1950  
Toll Free: 1.888.506.6887  
Fax: 303.730.1966  
nb-customerservice@bio-techne.com

### **Bio-Techne Canada**

21 Canmotor Ave  
Toronto, ON M8Z 4E6  
Canada  
Phone: 905.827.6400  
Toll Free: 855.668.8722  
Fax: 905.827.6402  
canada.inquires@bio-techne.com

### **Bio-Techne Ltd**

19 Barton Lane  
Abingdon Science Park  
Abingdon, OX14 3NB, United Kingdom  
Phone: (44) (0) 1235 529449  
Free Phone: 0800 37 34 15  
Fax: (44) (0) 1235 533420  
info.EMEA@bio-techne.com

### **General Contact Information**

[www.novusbio.com](http://www.novusbio.com)  
Technical Support: nb-technical@bio-techne.com  
Orders: nb-customerservice@bio-techne.com  
General: novus@novusbio.com

### **Products Related to NBP1-28100**

---

HAF005	Goat anti-Rat IgG Secondary Antibody [HRP]
NBP1-75398	Goat anti-Rat IgG (H+L) Secondary Antibody (Pre-adsorbed)
NBP1-43321-0.5mg	Rat IgG2a Kappa Light Chain Isotype Control (R2a)
NBP1-28101	KLRC1/2/3 Antibody (20d5) [FITC]

---

### **Limitations**

This product is for research use only and is not approved for use in humans or in clinical diagnosis. Primary Antibodies are guaranteed for 1 year from date of receipt.

For more information on our 100% guarantee, please visit [www.novusbio.com/guarantee](http://www.novusbio.com/guarantee)

Earn gift cards/discounts by submitting a review: [www.novusbio.com/reviews/submit/NBP1-28100](http://www.novusbio.com/reviews/submit/NBP1-28100)

Earn gift cards/discounts by submitting a publication using this product:  
[www.novusbio.com/publications](http://www.novusbio.com/publications)

