

Product Datasheet

SASH1 Antibody - BSA Free

NBP1-26651

Unit Size: 100 ul

Store at 4C. Do not freeze.

www.novusbio.com



technical@novusbio.com

Publications: 2

Protocols, Publications, Related Products, Reviews, Research Tools and Images at:
www.novusbio.com/NBP1-26651

Updated 2/21/2025 v.20.1

Earn rewards for product
reviews and publications.

Submit a publication at www.novusbio.com/publications

Submit a review at www.novusbio.com/reviews/destination/NBP1-26651



NBP1-26651

SASH1 Antibody - BSA Free

Product Information	
Unit Size	100 ul
Concentration	1.0 mg/ml
Storage	Store at 4C. Do not freeze.
Clonality	Polyclonal
Preservative	0.09% Sodium Azide
Isotype	IgG
Purity	Immunogen affinity purified
Buffer	Tris-Citrate/Phosphate (pH 7.0 - 8.0)

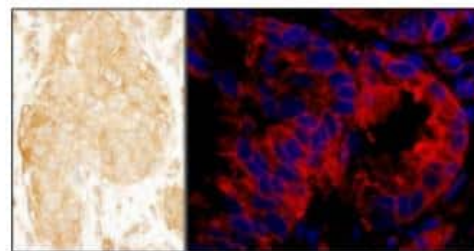
Product Description	
Host	Rabbit
Gene ID	23328
Gene Symbol	SASH1
Species	Human
Immunogen	The immunogen recognized by this antibody maps to a region between residue 750 and 800 of human SAM and SH3 domain containing 1 using the numbering given in entry NP_056093.3 (GeneID 23328).

Product Application Details	
Applications	Immunocytochemistry/ Immunofluorescence, Immunohistochemistry, Immunohistochemistry-Paraffin, Immunoprecipitation, Western Blot (Negative)
Recommended Dilutions	Immunohistochemistry 1:500-1:2000, Immunocytochemistry/ Immunofluorescence 1:250-1:1000, Immunoprecipitation 3-5 ug/mg lysate, Immunohistochemistry-Paraffin 1:500-1:2000, Western Blot (Negative)
Application Notes	Epitope retrieval with citrate buffer pH 6.0 is recommended for FFPE tissue sections.

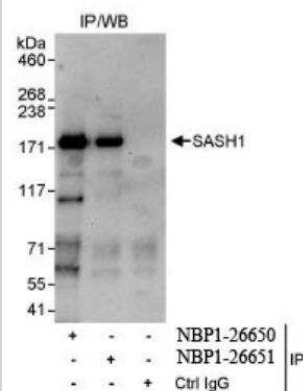


Images

Immunohistochemistry: SASH1 Antibody [NBP1-26651] - Sections of human breast carcinoma (left) and lung carcinoma (right). Antibody: Affinity purified rabbit anti- SASH1 used at a dilution of 1:1,000 (1ug/ml) and 1:400 (2.5 ug/ml). Detection: DAB and Red-fluorescent goat anti-rabbit IgG-heavy and light chain, cross-adsorbed Antibody DyLight® 594 Conjugated used at a dilution of 1:100.



Immunoprecipitation: SASH1 Antibody [NBP1-26651] - Whole cell lysate (1 mg for IP, 20% of IP loaded) from HeLa cells. Antibodies: Affinity purified rabbit used for IP at 3 mcg/mg lysate. SASH1 was also immunoprecipitated by rabbit anti- SASH1 antibody NBP1-26650, which recognizes an upstream epitope.



Publications

Zhou N, Liu C, Wang X et al. Downregulated SASH1 Expression Indicates Poor Clinical Prognosis in Gastric Cancer Hum. Pathol. 2018-01-07 [PMID: 29320755] (IHC-P, Human)

Weidmann H, Touat-Hamici Z, Durand H et al. SASH1, a new potential link between smoking and atherosclerosis. Atherosclerosis. [PMID: 26318107] (IF/IHC, Human)



Novus Biologicals USA

10730 E. Briarwood Avenue
Centennial, CO 80112
USA
Phone: 303.730.1950
Toll Free: 1.888.506.6887
Fax: 303.730.1966
nb-customerservice@bio-techne.com

Bio-Techne Canada

21 Canmotor Ave
Toronto, ON M8Z 4E6
Canada
Phone: 905.827.6400
Toll Free: 855.668.8722
Fax: 905.827.6402
canada.inquires@bio-techne.com

Bio-Techne Ltd

19 Barton Lane
Abingdon Science Park
Abingdon, OX14 3NB, United Kingdom
Phone: (44) (0) 1235 529449
Free Phone: 0800 37 34 15
Fax: (44) (0) 1235 533420
info.EMEA@bio-techne.com

General Contact Information

www.novusbio.com
Technical Support: nb-technical@bio-techne.com
Orders: nb-customerservice@bio-techne.com
General: novus@novusbio.com

Products Related to NBP1-26651

HAF008	Goat anti-Rabbit IgG Secondary Antibody [HRP]
NB7160	Goat anti-Rabbit IgG (H+L) Secondary Antibody [HRP]
NBP2-24891	Rabbit IgG Isotype Control
NBP1-85182PEP	SASH1 Recombinant Protein Antigen

Limitations

This product is for research use only and is not approved for use in humans or in clinical diagnosis. Primary Antibodies are guaranteed for 1 year from date of receipt.

For more information on our 100% guarantee, please visit www.novusbio.com/guarantee

Earn gift cards/discounts by submitting a review: www.novusbio.com/reviews/submit/NBP1-26651

Earn gift cards/discounts by submitting a publication using this product:
www.novusbio.com/publications

