

# Product Datasheet

## Glycophorin C Antibody (Ret40f) NBP1-22548

Unit Size: 0.5 ml

Store at 4C.

[www.novusbio.com](http://www.novusbio.com)



[technical@novusbio.com](mailto:technical@novusbio.com)

Protocols, Publications, Related Products, Reviews, Research Tools and Images at:  
[www.novusbio.com/NBP1-22548](http://www.novusbio.com/NBP1-22548)

Updated 5/13/2021 v.20.1

Earn rewards for product  
reviews and publications.

Submit a publication at [www.novusbio.com/publications](http://www.novusbio.com/publications)

Submit a review at [www.novusbio.com/reviews/destination/NBP1-22548](http://www.novusbio.com/reviews/destination/NBP1-22548)

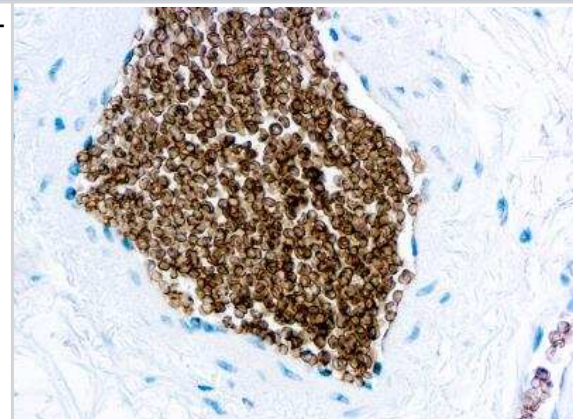


**NBP1-22548****Glycophorin C Antibody (Ret40f)**

<b>Product Information</b>	
<b>Unit Size</b>	0.5 ml
<b>Concentration</b>	This product is unpurified. The exact concentration of antibody is not quantifiable.
<b>Storage</b>	Store at 4C.
<b>Clonality</b>	Monoclonal
<b>Clone</b>	Ret40f
<b>Preservative</b>	0.09% Sodium Azide
<b>Isotype</b>	IgG1 Kappa
<b>Purity</b>	Tissue culture supernatant
<b>Buffer</b>	Tissue culture supernatant
<b>Product Description</b>	
<b>Host</b>	Mouse
<b>Gene ID</b>	2995
<b>Gene Symbol</b>	GYPC
<b>Species</b>	Human
<b>Reactivity Notes</b>	Human.
<b>Specificity/Sensitivity</b>	This is specific to beta sialoglycophorin also known as Glycophorin C. Glycophorin C is found on the human erythrocyte membrane and is one of four sialic acid rich polypeptide.
<b>Immunogen</b>	BALB/C mice were injected with red cell ghosts.
<b>Product Application Details</b>	
<b>Applications</b>	Immunohistochemistry, Immunohistochemistry-Paraffin
<b>Recommended Dilutions</b>	Immunohistochemistry 1:10-1:500, Immunohistochemistry-Paraffin 1:10-1:500

**Images**

Immunohistochemistry-Paraffin: Glycophorin C Antibody (Ret40f) [NBP1-22548] - Formalin fixed paraffin embedded human tonsil stained with Glycophorin C antibody (NBP1-22548).





### **Novus Biologicals USA**

10730 E. Briarwood Avenue  
Centennial, CO 80112  
USA  
Phone: 303.730.1950  
Toll Free: 1.888.506.6887  
Fax: 303.730.1966  
nb-customerservice@bio-techne.com

### **Bio-Techne Canada**

21 Canmotor Ave  
Toronto, ON M8Z 4E6  
Canada  
Phone: 905.827.6400  
Toll Free: 855.668.8722  
Fax: 905.827.6402  
canada.inquires@bio-techne.com

### **Bio-Techne Ltd**

19 Barton Lane  
Abingdon Science Park  
Abingdon, OX14 3NB, United Kingdom  
Phone: (44) (0) 1235 529449  
Free Phone: 0800 37 34 15  
Fax: (44) (0) 1235 533420  
info.EMEA@bio-techne.com

### **General Contact Information**

www.novusbio.com  
Technical Support: nb-technical@bio-  
techne.com  
Orders: nb-customerservice@bio-techne.com  
General: novus@novusbio.com

### **Limitations**

This product is for research use only and is not approved for use in humans or in clinical diagnosis. Primary Antibodies are guaranteed for 1 year from date of receipt.

For more information on our 100% guarantee, please visit [www.novusbio.com/guarantee](http://www.novusbio.com/guarantee)

Earn gift cards/discounts by submitting a review: [www.novusbio.com/reviews/submit/NBP1-22548](http://www.novusbio.com/reviews/submit/NBP1-22548)

Earn gift cards/discounts by submitting a publication using this product:  
[www.novusbio.com/publications](http://www.novusbio.com/publications)

