

Product Datasheet

Cytomegalovirus Antibody (DDG9 and CCH2) NBP1-22532

Unit Size: 0.5 ml

Store at 4C. Do not freeze.

www.novusbio.com



technical@novusbio.com

Reviews: 2

Protocols, Publications, Related Products, Reviews, Research Tools and Images at:
www.novusbio.com/NBP1-22532

Updated 1/31/2023 v.20.1

**Earn rewards for product
reviews and publications.**

Submit a publication at www.novusbio.com/publications

Submit a review at www.novusbio.com/reviews/destination/NBP1-22532



NBP1-22532

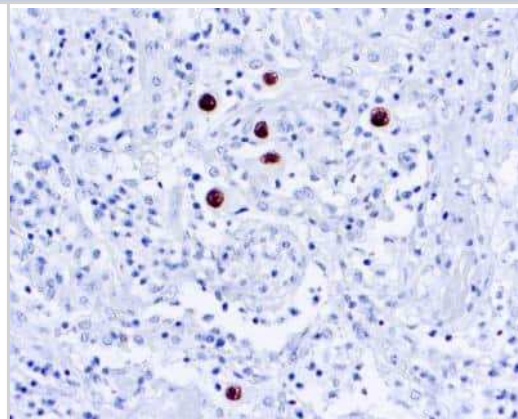
Cytomegalovirus Antibody (DDG9 and CCH2)

Product Information	
Unit Size	0.5 ml
Concentration	This product is unpurified. The exact concentration of antibody is not quantifiable.
Storage	Store at 4C. Do not freeze.
Clonality	Monoclonal
Clone	DDG9 and CCH2
Preservative	0.05% Sodium Azide
Isotype	IgG1 Kappa/IgG2a Kappa
Purity	Tissue culture supernatant
Buffer	Tissue culture supernatant
Product Description	
Host	Mouse
Species	Cytomegalovirus, Virus
Specificity/Sensitivity	This cocktail antibody reacts with an immediate early and early CMV antigens. The antibody stains infected cells giving a nuclear staining pattern with an immediate early and an early antigen.
Immunogen	BALB/C mice were immunized with cytomegalovirus infected cell lysate. This antibody is a cocktail of DDG9 and CCH2.
Product Application Details	
Applications	Immunohistochemistry, Immunohistochemistry-Paraffin
Recommended Dilutions	Immunohistochemistry 1:10-1:25, Immunohistochemistry-Paraffin 1:10-1:25
Application Notes	IHC-P: recommended pretreatment of citrate buffer, pH 6.0. Recommended incubation time of 30 min at RT.

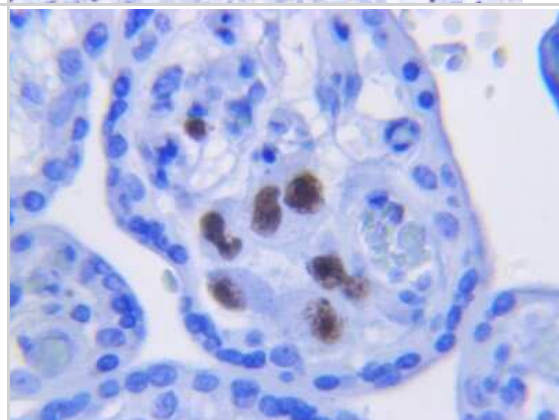


Images

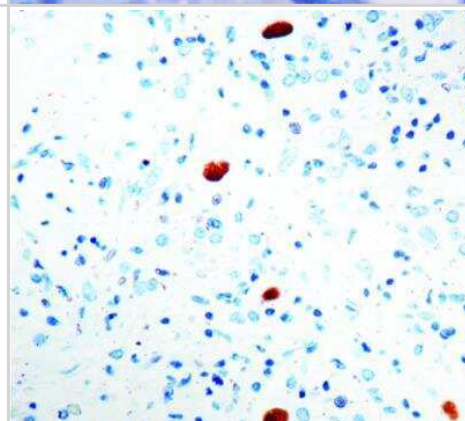
Immunohistochemistry-Paraffin: Cytomegalovirus Antibody (DDG9 and CCH2) [NBP1-22532] - IHC analysis of a formalin fixed paraffin embedded tissue section of CMV infected lung using Cytomegalovirus antibody (clone DDG9 and CCH2).



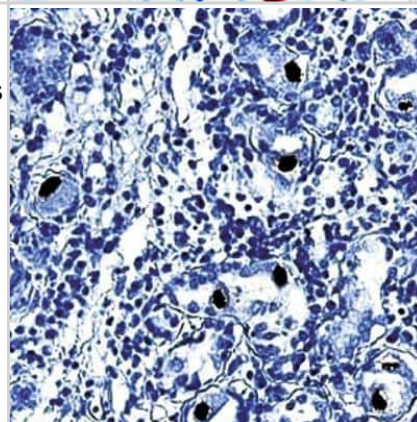
Immunohistochemistry: Cytomegalovirus Antibody (DDG9 and CCH2) [NBP1-22532] - Human Placenta CMV. HIER sodium citrate 6.0 - 30 minutes 1:10 dilution. This image was submitted via customer Review.



Immunohistochemistry-Paraffin: Cytomegalovirus Antibody (DDG9 and CCH2) [NBP1-22532] - IHC analysis of a formalin fixed paraffin embedded tissue section of CMV infected lung using Cytomegalovirus antibody (clone DDG9 and CCH2).



Immunohistochemistry-Paraffin: Cytomegalovirus Antibody (DDG9 and CCH2) [NBP1-22532] - IHC analysis of a formalin fixed paraffin embedded human salivary glands (CMV infected) using Cytomegalovirus antibody (clone DDG9 and CCH2).





Novus Biologicals USA

10730 E. Briarwood Avenue
Centennial, CO 80112
USA

Phone: 303.730.1950
Toll Free: 1.888.506.6887
Fax: 303.730.1966
novus@novusbio.com

Bio-Techne Canada

21 Canmotor Ave
Toronto, ON M8Z 4E6
Canada

Phone: 905.827.6400
Toll Free: 855.668.8722
Fax: 905.827.6402
canada.inquires@bio-techne.com

Bio-Techne Ltd

19 Barton Lane
Abingdon Science Park
Abingdon, OX14 3NB, United Kingdom

Phone: (44) (0) 1235 529449
Free Phone: 0800 37 34 15
Fax: (44) (0) 1235 533420
info.EMEA@bio-techne.com

General Contact Information

www.novusbio.com
Technical Support: technical@novusbio.com
Orders: orders@novusbio.com
General: novus@novusbio.com

Products Related to NBP1-22532

HAF007	Goat anti-Mouse IgG Secondary Antibody [HRP]
NB720-B	Rabbit anti-Mouse IgG (H+L) Secondary Antibody [Biotin]
NBP3-14808-0.1mg	Cytomegalovirus Native Protein
NBP2-62435	Cytomegalovirus Native Protein

Limitations

This product is for research use only and is not approved for use in humans or in clinical diagnosis. Primary Antibodies are guaranteed for 1 year from date of receipt.

For more information on our 100% guarantee, please visit www.novusbio.com/guarantee

Earn gift cards/discounts by submitting a review: www.novusbio.com/reviews/submit/NBP1-22532

Earn gift cards/discounts by submitting a publication using this product:
www.novusbio.com/publications

