

# Product Datasheet

## SOD3/EC-SOD Antibody (4GG11G6) - BSA Free NBP1-22417

Unit Size: 0.1 mg

Store at 4C short term. Aliquot and store at -20C long term. Avoid freeze-thaw cycles.

[www.novusbio.com](http://www.novusbio.com)



[technical@novusbio.com](mailto:technical@novusbio.com)

### Publications: 3

Protocols, Publications, Related Products, Reviews, Research Tools and Images at:  
[www.novusbio.com/NBP1-22417](http://www.novusbio.com/NBP1-22417)

Updated 2/21/2025 v.20.1

Earn rewards for product  
reviews and publications.

Submit a publication at [www.novusbio.com/publications](http://www.novusbio.com/publications)

Submit a review at [www.novusbio.com/reviews/destination/NBP1-22417](http://www.novusbio.com/reviews/destination/NBP1-22417)



**NBP1-22417**

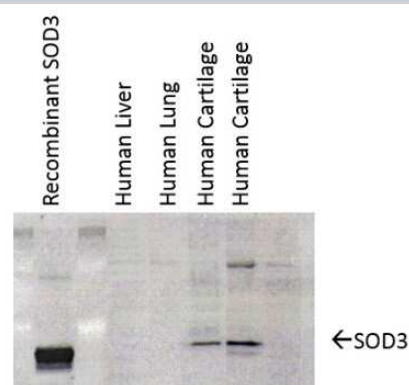
SOD3/EC-SOD Antibody (4GG11G6) - BSA Free

Product Information	
Unit Size	0.1 mg
Concentration	1 mg/ml
Storage	Store at 4C short term. Aliquot and store at -20C long term. Avoid freeze-thaw cycles.
Clonality	Monoclonal
Clone	4GG11G6
Preservative	0.09% Sodium Azide
Isotype	IgG1 Kappa
Purity	Protein G purified
Buffer	PBS (pH 7.4), 50% Glycerol
Product Description	
Host	Mouse
Gene ID	6649
Gene Symbol	SOD3
Species	Human, Mouse, Rat, Guinea Pig
Specificity/Sensitivity	Detects extracellular SOD approx 35kDa.
Immunogen	Human extracellular SOD purified from aortas
Product Application Details	
Applications	Western Blot, ELISA, Immunocytochemistry/ Immunofluorescence, Immunohistochemistry, Immunohistochemistry-Paraffin
Recommended Dilutions	Western Blot 1:1000, ELISA 1:100-1:2000, Immunohistochemistry 1:100, Immunocytochemistry/ Immunofluorescence 1:100, Immunohistochemistry-Paraffin 1:100
Application Notes	1 ug/ml of SOD (EC) Antibody was sufficient for detection of EC-SOD in 20 ug of human cartilage lysate by colorimetric immunoblot analysis using Goat anti-mouse IgG:HRP as the secondary Antibody.



## Images

Western Blot: SOD3/EC-SOD Antibody (4GG11G6) [NBP1-22417] - analysis of Human cartilage lysates showing detection of SOD3 protein using Mouse Anti-SOD3 Monoclonal Antibody, Clone 4GG11G6 . Primary Antibody: Mouse Anti-SOD3 Monoclonal Antibody at 1:1000. Left: Control, Middle: Young cartilage, Right: Cartilage sample with osteo-arthritis..



Immunohistochemistry: SOD3/EC-SOD Antibody (4GG11G6) [NBP1-22417] - analysis using Mouse Anti-SOD3 Monoclonal Antibody, Clone 4GG11G6 . Tissue: cartilage. Species: Human. Primary Antibody: Mouse Anti-SOD3 Monoclonal Antibody at 1:1000.



## Publications

Davis SM, Collier LA, Foran EA et al. Neuroprotective activity of leukemia inhibitory factor is relayed through myeloid zinc finger-1 in a rat model of stroke Metab Brain Dis. 2019-04-15 [PMID: 30612292] (IF/IHC, Rat)

Details:

Citation using the HRP form of this antibody.

Davis SM, Collier LA, Leonardo CC et al. Leukemia Inhibitory Factor Protects Neurons from Ischemic Damage via Upregulation of Superoxide Dismutase 3. Mol. Neurobiol. 2016-01-09 [PMID: 26746670] (WB, IF/IHC, Rat)

Wang Ca, Harrell J, Iwanaga R et al. Vascular endothelial growth factor-C promotes breast cancer progression via a novel anti-oxidant mechanism that involves regulation of Superoxide dismutase 3 Breast Cancer Res. 2014-10-30 [PMID: 25358638] (WB, Human, Mouse)

Details:

SOD3 antibody used for WB on lysates of 66 cl4 mammary carcinoma cells subjected or not to VEGF-C knockdown (Figure 5b). Antibody also used in WB for detecting secreted Sod3 in the media of 66 cl4-scram, 66 cl4-VEGF-C KD and 66 cl4-VEGF-C KD + Sod3 cells (Figure 6a), and in total cell lysates as well as the medium from 66 cl4-scram and 66 cl4-nrp2 knockdown cells (Figure 7B). WB with SOD3 also performed on MDA-MB-231 breast cancer cells subjected or not to VEGF-C knockdown (Figure S8).



### **Novus Biologicals USA**

10730 E. Briarwood Avenue  
Centennial, CO 80112  
USA  
Phone: 303.730.1950  
Toll Free: 1.888.506.6887  
Fax: 303.730.1966  
nb-customerservice@bio-techne.com

### **Bio-Techne Canada**

21 Canmotor Ave  
Toronto, ON M8Z 4E6  
Canada  
Phone: 905.827.6400  
Toll Free: 855.668.8722  
Fax: 905.827.6402  
canada.inquires@bio-techne.com

### **Bio-Techne Ltd**

19 Barton Lane  
Abingdon Science Park  
Abingdon, OX14 3NB, United Kingdom  
Phone: (44) (0) 1235 529449  
Free Phone: 0800 37 34 15  
Fax: (44) (0) 1235 533420  
info.EMEA@bio-techne.com

### **General Contact Information**

www.novusbio.com  
Technical Support: nb-technical@bio-techne.com  
Orders: nb-customerservice@bio-techne.com  
General: novus@novusbio.com

### **Products Related to NBP1-22417**

HAF007	Goat anti-Mouse IgG Secondary Antibody [HRP]
NB720-B	Rabbit anti-Mouse IgG (H+L) Secondary Antibody [Biotin]
NBP1-43319-0.5mg	Mouse IgG1 Kappa Isotype Control (P3.6.2.8.1)
NBP1-22417UV	SOD3/EC-SOD Antibody (4GG11G6) [DyLight 350]

### **Limitations**

This product is for research use only and is not approved for use in humans or in clinical diagnosis. Primary Antibodies are guaranteed for 1 year from date of receipt.

For more information on our 100% guarantee, please visit [www.novusbio.com/guarantee](http://www.novusbio.com/guarantee)

Earn gift cards/discounts by submitting a review: [www.novusbio.com/reviews/submit/NBP1-22417](http://www.novusbio.com/reviews/submit/NBP1-22417)

Earn gift cards/discounts by submitting a publication using this product:  
[www.novusbio.com/publications](http://www.novusbio.com/publications)

