

Product Datasheet

Dectin-1/CLEC7A Antibody (BD6) - BSA Free NBP1-21513

Unit Size: 0.1 mg

Store at 4C short term. Aliquot and store at -20C long term. Avoid freeze-thaw cycles.

www.novusbio.com



technical@novusbio.com

Protocols, Publications, Related Products, Reviews, Research Tools and Images at:
www.novusbio.com/NBP1-21513

Updated 2/21/2025 v.20.1

Earn rewards for product
reviews and publications.

Submit a publication at www.novusbio.com/publications

Submit a review at www.novusbio.com/reviews/destination/NBP1-21513



NBP1-21513

Dectin-1/CLEC7A Antibody (BD6) - BSA Free

Product Information

Unit Size	0.1 mg
Concentration	1.0 mg/ml
Storage	Store at 4C short term. Aliquot and store at -20C long term. Avoid freeze-thaw cycles.
Clonality	Monoclonal
Clone	BD6
Preservative	0.09% Sodium Azide
Isotype	IgG2b
Purity	Protein G purified
Buffer	PBS

Product Description

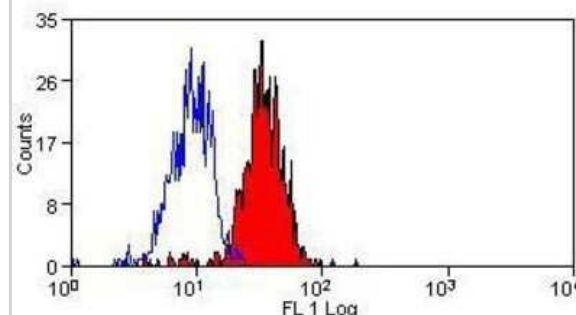
Host	Mouse
Gene ID	64581
Gene Symbol	CLEC7A
Species	Human
Specificity/Sensitivity	NBP1-21513 recognizes human Dectin-1, also known as beta-glucan receptor (betaGR), a C-type lectin domain family member. It is a major pathogen pattern-recognition receptor that binds beta-glucans, glucose polymers that form cell-wall components or exopolymers of yeasts, fungi and some bacteria. Beta-glucans have also been used experimentally and therapeutically as immunomodulators that enhance resistance to bacterial, yeast, viral and protozoan infections, as well as tumor formation. Dectin-1 also acts as a co-stimulatory molecule on T-cells to induce their proliferation and is necessary for the TLR2-mediated inflammatory response. It is highly expressed on peripheral blood leukocytes and dendritic cells. Human Dectin-1 has two major (betaGR-A and betaGR-B) and several minor isoforms. betaGR-A and betaGR-B differs by the presence and absence, respectively, of a stalk region. Clone BD6 recognizes betaGR-A only.
Immunogen	NIH3T3 cells expressing full length Beta-glucan receptor

Product Application Details

Applications	Flow Cytometry
Recommended Dilutions	Flow Cytometry 1:25 - 1:200

Images

Flow Cytometry: Dectin-1/CLEC7A Antibody (BD6) [NBP1-21513] - Analysis using the FITC conjugate of NBP1-21513. Staining of human peripheral blood monocytes.





Novus Biologicals USA

10730 E. Briarwood Avenue
Centennial, CO 80112
USA

Phone: 303.730.1950

Toll Free: 1.888.506.6887

Fax: 303.730.1966

nb-customerservice@bio-techne.com

Bio-Techne Canada

21 Canmotor Ave
Toronto, ON M8Z 4E6
Canada

Phone: 905.827.6400

Toll Free: 855.668.8722

Fax: 905.827.6402

canada.inquires@bio-techne.com

Bio-Techne Ltd

19 Barton Lane
Abingdon Science Park
Abingdon, OX14 3NB, United Kingdom

Phone: (44) (0) 1235 529449

Free Phone: 0800 37 34 15

Fax: (44) (0) 1235 533420

info.EMEA@bio-techne.com

General Contact Information

www.novusbio.com

Technical Support: nb-technical@bio-techne.com

Orders: nb-customerservice@bio-techne.com

General: novus@novusbio.com

Products Related to NBP1-21513

HAF007	Goat anti-Mouse IgG Secondary Antibody [HRP]
NB720-B	Rabbit anti-Mouse IgG (H+L) Secondary Antibody [Biotin]
NBP2-27231	Mouse IgG2b Isotype Control (MPC-11)
NBP1-21513AF647	Dectin-1/CLEC7A Antibody (BD6) [Alexa Fluor® 647]

Limitations

This product is for research use only and is not approved for use in humans or in clinical diagnosis. Primary Antibodies are guaranteed for 1 year from date of receipt.

For more information on our 100% guarantee, please visit www.novusbio.com/guarantee

Earn gift cards/discounts by submitting a review: www.novusbio.com/reviews/submit/NBP1-21513

Earn gift cards/discounts by submitting a publication using this product:
www.novusbio.com/publications

