

# Product Datasheet

## Aminopeptidase LRAP/ERAP2 Antibody NBP1-20913

Unit Size: 0.1 mg

Store at -20C. Avoid freeze-thaw cycles.

[www.novusbio.com](http://www.novusbio.com)



[technical@novusbio.com](mailto:technical@novusbio.com)

### Publications: 1

Protocols, Publications, Related Products, Reviews, Research Tools and Images at:  
[www.novusbio.com/NBP1-20913](http://www.novusbio.com/NBP1-20913)

Updated 11/9/2023 v.20.1

Earn rewards for product  
reviews and publications.

Submit a publication at [www.novusbio.com/publications](http://www.novusbio.com/publications)

Submit a review at [www.novusbio.com/reviews/destination/NBP1-20913](http://www.novusbio.com/reviews/destination/NBP1-20913)



**NBP1-20913****Aminopeptidase LRAP/ERAP2 Antibody****Product Information**

<b>Unit Size</b>	0.1 mg
<b>Concentration</b>	0.5 mg/ml
<b>Storage</b>	Store at -20C. Avoid freeze-thaw cycles.
<b>Clonality</b>	Polyclonal
<b>Preservative</b>	0.02% Sodium Azide
<b>Isotype</b>	IgG
<b>Purity</b>	Immunogen affinity purified
<b>Buffer</b>	Tris saline (20 mM Tris pH 7.3, 150 mM NaCl), 0.5% BSA

**Product Description**

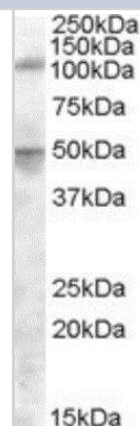
<b>Host</b>	Goat
<b>Gene ID</b>	64167
<b>Gene Symbol</b>	ERAP2
<b>Species</b>	Human
<b>Immunogen</b>	Peptide with sequence C-QYLKKFSYRNAKND corresponding to internal region according to NP_071745.1.

**Product Application Details**

<b>Applications</b>	Western Blot, Peptide ELISA
<b>Recommended Dilutions</b>	Western Blot 0.5 - 1.5 ug/ml, Peptide ELISA Detection limit 1:16000
<b>Application Notes</b>	WB: Approx. 110 kDa band observed in human spleen lysates (calculated MW of 110 kDa band according to NP_071745.1). An additional band of unknown identity was also consistently observed at 50 kDa. This band was successfully blocked by incubation with the immunizing peptide.

**Images**

Western Blot: Aminopeptidase LRAP/ERAP2 Antibody [NBP1-20913] - (0.5ug/ml) staining of Spleen lysate (35ug protein in RIPA buffer). Primary incubation was 1 hour. Detected by chemiluminescence.

**Publications**

Saveanu L, Carroll O, Lindo V et al. Concerted peptide trimming by human ERAP1 and ERAP2 aminopeptidase complexes in the endoplasmic reticulum. Nat Immunol 2005-07-01 [PMID: 15908954]



### **Novus Biologicals USA**

10730 E. Briarwood Avenue  
Centennial, CO 80112  
USA  
Phone: 303.730.1950  
Toll Free: 1.888.506.6887  
Fax: 303.730.1966  
nb-customerservice@bio-techne.com

### **Bio-Techne Canada**

21 Canmotor Ave  
Toronto, ON M8Z 4E6  
Canada  
Phone: 905.827.6400  
Toll Free: 855.668.8722  
Fax: 905.827.6402  
canada.inquires@bio-techne.com

### **Bio-Techne Ltd**

19 Barton Lane  
Abingdon Science Park  
Abingdon, OX14 3NB, United Kingdom  
Phone: (44) (0) 1235 529449  
Free Phone: 0800 37 34 15  
Fax: (44) (0) 1235 533420  
info.EMEA@bio-techne.com

### **General Contact Information**

[www.novusbio.com](http://www.novusbio.com)  
Technical Support: nb-technical@bio-techne.com  
Orders: nb-customerservice@bio-techne.com  
General: novus@novusbio.com

### **Limitations**

This product is for research use only and is not approved for use in humans or in clinical diagnosis. Primary Antibodies are guaranteed for 1 year from date of receipt.

For more information on our 100% guarantee, please visit [www.novusbio.com/guarantee](http://www.novusbio.com/guarantee)

Earn gift cards/discounts by submitting a review: [www.novusbio.com/reviews/submit/NBP1-20913](http://www.novusbio.com/reviews/submit/NBP1-20913)

Earn gift cards/discounts by submitting a publication using this product:  
[www.novusbio.com/publications](http://www.novusbio.com/publications)

