

Product Datasheet

HPi4 Antibody (HIC1-5F10)

NBP1-18948

Unit Size: 0.1 ml

Store at 4C. Do not freeze.

www.novusbio.com



technical@novusbio.com

Publications: 2

Protocols, Publications, Related Products, Reviews, Research Tools and Images at:
www.novusbio.com/NBP1-18948

Updated 10/23/2024 v.20.1

Earn rewards for product
reviews and publications.

Submit a publication at www.novusbio.com/publications

Submit a review at www.novusbio.com/reviews/destination/NBP1-18948



NBP1-18948

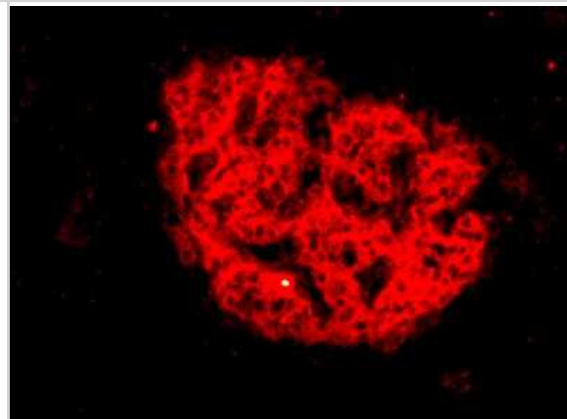
HPi4 Antibody (HIC1-5F10)

Product Information	
Unit Size	0.1 ml
Concentration	This product is unpurified. The exact concentration of antibody is not quantifiable.
Storage	Store at 4C. Do not freeze.
Clonality	Monoclonal
Clone	HIC1-5F10
Preservative	0.05% Sodium Azide
Isotype	IgG1
Purity	Tissue culture supernatant
Buffer	Tissue culture supernatant
Product Description	
Host	Mouse
Species	Human, Mouse
Reactivity Notes	Mouse reactivity reported in scientific literature (PMID: 26515645).
Marker	Endocrine pan-islet cell Marker
Specificity/Sensitivity	Specific for multiple endocrine cell types.
Immunogen	Human pancreatic enriched islet cells containing low levels of exocrine and ductal cells.
Product Application Details	
Applications	Flow Cytometry, Immunocytochemistry/ Immunofluorescence, Immunohistochemistry, Immunohistochemistry-Frozen
Recommended Dilutions	Flow Cytometry 1:50-1:100, Immunohistochemistry 1:100, Immunocytochemistry/ Immunofluorescence 1:10-1:500, Immunohistochemistry-Frozen 1:100
Application Notes	This HPi4 (HIC1-5F10) antibody is useful for Immunohistochemistry on acetone fixed frozen sections, Immunocytochemistry/Immunofluorescence and Flow cytometry.

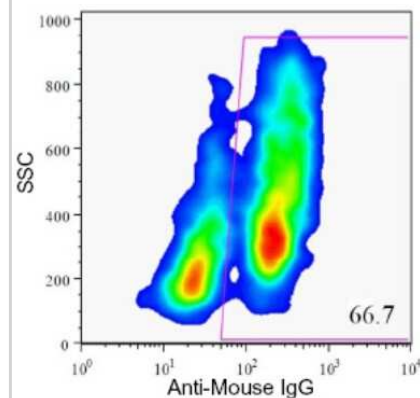


Images

Immunocytochemistry/Immunofluorescence: HPi4 Antibody (HIC1-5F10) [NBP1-18948] - Immunofluorescence on frozen section of human pancreas.



Flow Cytometry: HPi4 Antibody (HIC1-5F10) [NBP1-18948] - Analysis of enzyme dispersed human pancreas cells.



Publications

Korytnikov R, Nostro MC. Generation of polyhormonal and multipotent pancreatic progenitor lineages from human pluripotent stem cells. *Methods*. 2015-10-27 [PMID: 26515645]

Dorrell, et al. Isolation of major pancreatic cell types long-term culture-initiating cells using novel human surface markers. *Stem Cell Rsch* 1(3):183-194. 2008-01-01 [PMID: 19383399] (FLOW, IHC-Fr, Human)

**Novus Biologicals USA**

10730 E. Briarwood Avenue
Centennial, CO 80112
USA
Phone: 303.730.1950
Toll Free: 1.888.506.6887
Fax: 303.730.1966
nb-customerservice@bio-techne.com

Bio-Techne Canada

21 Canmotor Ave
Toronto, ON M8Z 4E6
Canada
Phone: 905.827.6400
Toll Free: 855.668.8722
Fax: 905.827.6402
canada.inquires@bio-techne.com

Bio-Techne Ltd

19 Barton Lane
Abingdon Science Park
Abingdon, OX14 3NB, United Kingdom
Phone: (44) (0) 1235 529449
Free Phone: 0800 37 34 15
Fax: (44) (0) 1235 533420
info.EMEA@bio-techne.com

General Contact Information

www.novusbio.com
Technical Support: nb-technical@bio-techne.com
Orders: nb-customerservice@bio-techne.com
General: novus@novusbio.com

Products Related to NBP1-18948

HAF007	Goat anti-Mouse IgG Secondary Antibody [HRP]
NB720-B	Rabbit anti-Mouse IgG (H+L) Secondary Antibody [Biotin]
NBP1-97005-0.5mg	Mouse IgG1 Isotype Control (MG1)
NBP1-18948G	HPi4 Antibody (HIC1-5F10) [DyLight 488]

Limitations

This product is for research use only and is not approved for use in humans or in clinical diagnosis. Primary Antibodies are guaranteed for 1 year from date of receipt.

For more information on our 100% guarantee, please visit www.novusbio.com/guarantee

Earn gift cards/discounts by submitting a review: www.novusbio.com/reviews/submit/NBP1-18948

Earn gift cards/discounts by submitting a publication using this product:
www.novusbio.com/publications

