

Product Datasheet

EZH2/KMT6 [p Ser21] Antibody NBP1-18935

Unit Size: 0.1 ml

Store at 4C. Do not freeze.

www.novusbio.com



technical@novusbio.com

Publications: 1

Protocols, Publications, Related Products, Reviews, Research Tools and Images at:
www.novusbio.com/NBP1-18935

Updated 8/9/2020 v.20.1

Earn rewards for product
reviews and publications.

Submit a publication at www.novusbio.com/publications

Submit a review at www.novusbio.com/reviews/destination/NBP1-18935



NBP1-18935

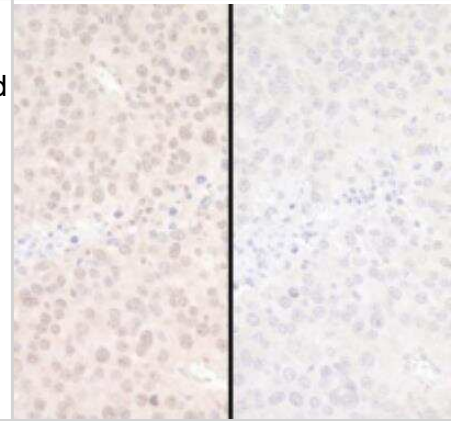
EZH2/KMT6 [p Ser21] Antibody

Product Information	
Unit Size	0.1 ml
Concentration	Please see the vial label for concentration. If unlisted please contact technical services.
Storage	Store at 4C. Do not freeze.
Clonality	Polyclonal
Preservative	0.09% Sodium Azide
Isotype	IgG
Purity	Immunogen affinity purified
Buffer	TBS and 0.1% BSA
Product Description	
Host	Rabbit
Gene ID	2146
Gene Symbol	EZH2
Species	Human, Mouse
Reactivity Notes	Orangutan (100%), Panda (100%).
Immunogen	The immunogen recognized by this antibody maps to phosphorylated Serine 21 and surrounding residues of humanKMT6/EZH2 [p Ser21] using the numbering given in entry NP_004447.2 (GeneID 2146).
Product Application Details	
Applications	Immunohistochemistry, Immunohistochemistry-Paraffin
Recommended Dilutions	Immunohistochemistry 1:10-1:500, Immunohistochemistry-Paraffin 1:100-1:500
Application Notes	Epitope exposure is recommended. Epitope exposure with citrate buffer will enhance staining. Likely to work with frozen sections.

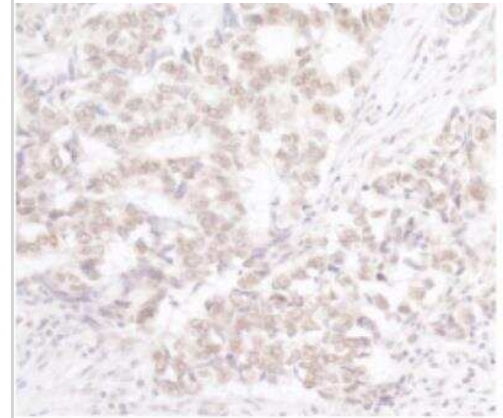


Images

Immunohistochemistry-Paraffin: EZH2/KMT6 [p Ser21] Antibody [NBP1-18935] - FFPE serial sections of mouse renal cell carcinoma. Mock phosphatase treated section (left) and calf intestinal phosphatase-treated section (right). Antibody: Affinity purified rabbit anti-PhosphoEZH2 (S21) used at a dilution of 1:250. Detection: DAB



Immunohistochemistry-Paraffin: EZH2/KMT6 [p Ser21] Antibody [NBP1-18935] - FFPE section of human lung carcinoma. Antibody: Affinity purified rabbit antiPhospho-EZH2 (S21) used at a dilution of 1:250. Detection:DAB



Publications

HyIPL, McDade SS, McCloskey R et al. Evidence for alteration of EZH2, BMI1, and KDM6A and epigenetic reprogramming in human papillomavirus type 16 E6/E7-expressing keratinocytes. J Virol 2011-11-01 [PMID: 21865393]



Novus Biologicals USA

10730 E. Briarwood Avenue
Centennial, CO 80112
USA

Phone: 303.730.1950

Toll Free: 1.888.506.6887

Fax: 303.730.1966

nb-customerservice@bio-techne.com

Bio-Techne Canada

21 Canmotor Ave
Toronto, ON M8Z 4E6
Canada

Phone: 905.827.6400

Toll Free: 855.668.8722

Fax: 905.827.6402

canada.inquires@bio-techne.com

Bio-Techne Ltd

19 Barton Lane
Abingdon Science Park
Abingdon, OX14 3NB, United Kingdom

Phone: (44) (0) 1235 529449

Free Phone: 0800 37 34 15

Fax: (44) (0) 1235 533420

info.EMEA@bio-techne.com

General Contact Information

www.novusbio.com

Technical Support: nb-technical@bio-techne.com

Orders: nb-customerservice@bio-techne.com

General: novus@novusbio.com

Limitations

This product is for research use only and is not approved for use in humans or in clinical diagnosis. Primary Antibodies are guaranteed for 1 year from date of receipt.

For more information on our 100% guarantee, please visit www.novusbio.com/guarantee

Earn gift cards/discounts by submitting a review: www.novusbio.com/reviews/submit/NBP1-18935

Earn gift cards/discounts by submitting a publication using this product:
www.novusbio.com/publications

