

Product Datasheet

OBFC2B Antibody - BSA Free

NBP1-06561

Unit Size: 100 ul

Store at 4C. Do not freeze.

www.novusbio.com



technical@novusbio.com

Publications: 1

Protocols, Publications, Related Products, Reviews, Research Tools and Images at:
www.novusbio.com/NBP1-06561

Updated 2/21/2025 v.20.1

Earn rewards for product
reviews and publications.

Submit a publication at www.novusbio.com/publications

Submit a review at www.novusbio.com/reviews/destination/NBP1-06561



NBP1-06561

OBFC2B Antibody - BSA Free

Product Information	
Unit Size	100 ul
Concentration	1.0 mg/ml
Storage	Store at 4C. Do not freeze.
Clonality	Polyclonal
Preservative	0.09% Sodium Azide
Isotype	IgG
Purity	Immunogen affinity purified
Buffer	Tris-Citrate/Phosphate (pH 7.0 - 8.0)

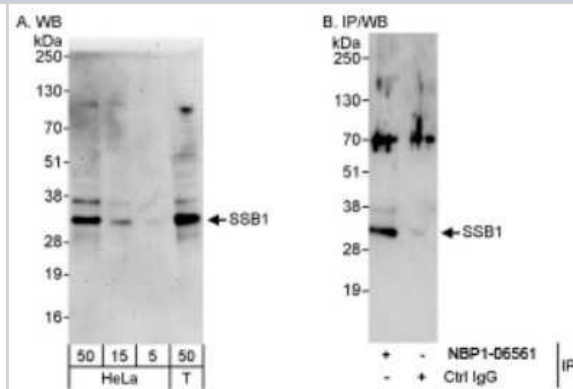
Product Description	
Host	Rabbit
Gene ID	79035
Gene Symbol	NABP2
Species	Human, Mouse
Immunogen	The immunogen recognized by this antibody maps to a region between residue 161 and 211 of human single-stranded DNA-binding protein 1 using the numbering given in entry NP_076973.1 (GenelD 79035).

Product Application Details	
Applications	Western Blot, Immunohistochemistry, Immunohistochemistry-Paraffin, Immunoprecipitation
Recommended Dilutions	Western Blot 1:2000-1:10000, Immunohistochemistry, Immunoprecipitation 2-5 mcg/mg lysate, Immunohistochemistry-Paraffin 1:10-1:500
Application Notes	Epitope retrieval with Tris-EDTA pH9.0 is recommended for human tissues. Epitope retrieval with citrate buffer pH6.0 is recommended for mouse tissues

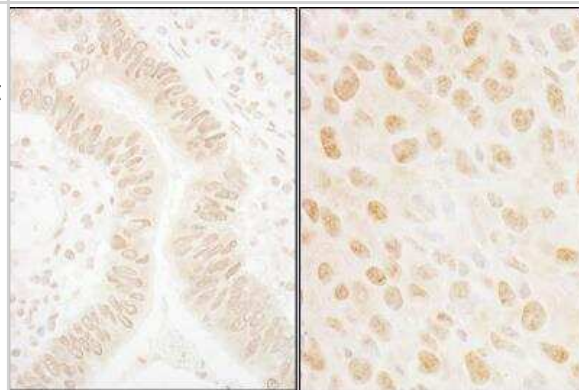


Images

Western Blot: OBFC2B Antibody [NBP1-06561] - Whole cell lysate from HeLa (5, 15 and 50 ug for WB) and 293T (T; 50 ug for WB; 1 mg for IP, 20% of IP loaded) cells. NBP1-06561 used for WB at 0.4 ug/ml (A) and 1 ug/ml (B) and used for IP at 3 ug/mg lysate.



Immunohistochemistry: OBFC2B Antibody [NBP1-06561] - Sample: FFPE sections of human colon carcinoma (left) and mouse squamous cell carcinoma (right). Antibody: Affinity purified rabbit anti- SSB1 used at a dilution of 1:1,000 (1ug/ml). Detection: DAB



Publications

Feldhahn N, Ferretti E, Robbiani DF et al. The hSSB1 orthologue Obfc2b is essential for skeletogenesis but dispensable for the DNA damage response in vivo. EMBO J 2012-10-01 [PMID: 22940690]



Novus Biologicals USA

10730 E. Briarwood Avenue
Centennial, CO 80112
USA
Phone: 303.730.1950
Toll Free: 1.888.506.6887
Fax: 303.730.1966
nb-customerservice@bio-techne.com

Bio-Techne Canada

21 Canmotor Ave
Toronto, ON M8Z 4E6
Canada
Phone: 905.827.6400
Toll Free: 855.668.8722
Fax: 905.827.6402
canada.inquires@bio-techne.com

Bio-Techne Ltd

19 Barton Lane
Abingdon Science Park
Abingdon, OX14 3NB, United Kingdom
Phone: (44) (0) 1235 529449
Free Phone: 0800 37 34 15
Fax: (44) (0) 1235 533420
info.EMEA@bio-techne.com

General Contact Information

www.novusbio.com
Technical Support: nb-technical@bio-techne.com
Orders: nb-customerservice@bio-techne.com
General: novus@novusbio.com

Products Related to NBP1-06561

NBL1-13900	OBFC2B Overexpression Lysate
HAF008	Goat anti-Rabbit IgG Secondary Antibody [HRP]
NB7160	Goat anti-Rabbit IgG (H+L) Secondary Antibody [HRP]
NBP2-24891	Rabbit IgG Isotype Control

Limitations

This product is for research use only and is not approved for use in humans or in clinical diagnosis. Primary Antibodies are guaranteed for 1 year from date of receipt.

For more information on our 100% guarantee, please visit www.novusbio.com/guarantee

Earn gift cards/discounts by submitting a review: www.novusbio.com/reviews/submit/NBP1-06561

Earn gift cards/discounts by submitting a publication using this product:
www.novusbio.com/publications

