

Product Datasheet

Casein Kinase 2 beta Antibody NBP1-06515

Unit Size: 0.1 ml

Store at 4C. Do not freeze.

www.novusbio.com



technical@novusbio.com

Publications: 1

Protocols, Publications, Related Products, Reviews, Research Tools and Images at:
www.novusbio.com/NBP1-06515

Updated 9/18/2023 v.20.1

Earn rewards for product
reviews and publications.

Submit a publication at www.novusbio.com/publications

Submit a review at www.novusbio.com/reviews/destination/NBP1-06515



NBP1-06515

Casein Kinase 2 beta Antibody

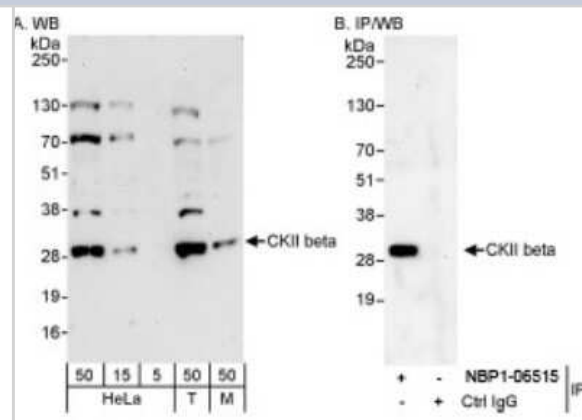
Product Information	
Unit Size	0.1 ml
Concentration	0.2 mg/ml
Storage	Store at 4C. Do not freeze.
Clonality	Polyclonal
Preservative	0.09% Sodium Azide
Isotype	IgG
Purity	Immunogen affinity purified
Buffer	TBS and 0.1% BSA

Product Description	
Description	This antibody can be used as the primary antibody in a PLA assay with the following as complementing antibodies:NB100-1567, NB100-97835, NB200-171
Host	Rabbit
Gene ID	1460
Gene Symbol	CSNK2B
Species	Human, Mouse
Immunogen	The immunogen recognized by this antibody maps to a region between residue 165 and 215 of human casein kinase 2, beta using the numbering given in entry NP_001311.3 (GeneID 1460).
Notes	This antibody can be used as the primary antibody in a PLA assay with the following as complementing antibodies:NB100-1567, NB100-97835, NB200-171

Product Application Details	
Applications	Western Blot, Immunoprecipitation
Recommended Dilutions	Western Blot 1:2000-1:10000, Immunoprecipitation 2-5 ug/mg lysate
Application Notes	Western blot of lysates performed using standard western blot reagents and 4-20% SDS-PAGE.

Images

Western Blot: Casein Kinase 2 beta Antibody [NBP1-06515] - Whole cell lysate from HeLa (5, 15 and 50 ug for WB; 1 mg for IP, 20% of IP loaded), HEK293T (T; 50 ug) and mouse NIH 3T3 (M; 50 ug) cells. Antibodies: Affinity purified rabbit anti-CKII beta antibody used for WB at 0.04 ug/ml (A) and 1 ug/ml (B) and used for IP at 3 ug/mg lysate. Detection: Chemiluminescence with exposure times of 30 seconds (A) and 10 seconds (B).

**Publications**

Golkowski M, Lius A, Sapre T et al. Multiplexed kinase interactome profiling quantifies cellular network activity and plasticity Molecular Cell 2023-02-01 [PMID: 36736316] (IP, Human)



Novus Biologicals USA

10730 E. Briarwood Avenue
Centennial, CO 80112
USA
Phone: 303.730.1950
Toll Free: 1.888.506.6887
Fax: 303.730.1966
nb-customerservice@bio-techne.com

Bio-Techne Canada

21 Canmotor Ave
Toronto, ON M8Z 4E6
Canada
Phone: 905.827.6400
Toll Free: 855.668.8722
Fax: 905.827.6402
canada.inquires@bio-techne.com

Bio-Techne Ltd

19 Barton Lane
Abingdon Science Park
Abingdon, OX14 3NB, United Kingdom
Phone: (44) (0) 1235 529449
Free Phone: 0800 37 34 15
Fax: (44) (0) 1235 533420
info.EMEA@bio-techne.com

General Contact Information

www.novusbio.com
Technical Support: nb-technical@bio-techne.com
Orders: nb-customerservice@bio-techne.com
General: novus@novusbio.com

Products Related to NBP1-06515

NBL1-09538	Casein Kinase 2 beta Overexpression Lysate
HAF008	Goat anti-Rabbit IgG Secondary Antibody [HRP]
NB7160	Goat anti-Rabbit IgG (H+L) Secondary Antibody [HRP]
NBP2-24891	Rabbit IgG Isotype Control

Limitations

This product is for research use only and is not approved for use in humans or in clinical diagnosis. Primary Antibodies are guaranteed for 1 year from date of receipt.

For more information on our 100% guarantee, please visit www.novusbio.com/guarantee

Earn gift cards/discounts by submitting a review: www.novusbio.com/reviews/submit/NBP1-06515

Earn gift cards/discounts by submitting a publication using this product:
www.novusbio.com/publications

