

Product Datasheet

C-Reactive Protein/CRP Antibody (5A9) - BSA Free NBP1-04282

Unit Size: 0.1 ml

Store at 4C short term. Aliquot and store at -20C long term. Avoid freeze-thaw cycles.

www.novusbio.com



technical@novusbio.com

Protocols, Publications, Related Products, Reviews, Research Tools and Images at:
www.novusbio.com/NBP1-04282

Updated 7/17/2023 v.20.1

Earn rewards for product
reviews and publications.

Submit a publication at www.novusbio.com/publications

Submit a review at www.novusbio.com/reviews/destination/NBP1-04282



NBP1-04282

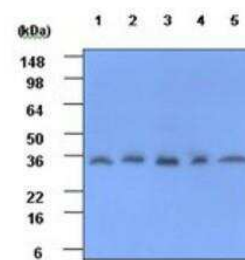
C-Reactive Protein/CRP Antibody (5A9) - BSA Free

Product Information	
Unit Size	0.1 ml
Concentration	1.0 mg/ml
Storage	Store at 4C short term. Aliquot and store at -20C long term. Avoid freeze-thaw cycles.
Clonality	Monoclonal
Clone	5A9
Preservative	0.02% Sodium Azide
Isotype	IgG2a Kappa
Purity	Protein G purified
Buffer	PBS (pH 7.4), 10% Glycerol
Product Description	
Host	Mouse
Gene ID	1401
Gene Symbol	CRP
Species	Human
Immunogen	Recombinant human C-Reactive Protein/CRP (19-224aa) purified from E. coli
Product Application Details	
Applications	Western Blot, ELISA, Flow Cytometry, Immunocytochemistry/ Immunofluorescence
Recommended Dilutions	Western Blot 1:100-1:2000, Flow Cytometry, ELISA 1:100-1:2000, Immunocytochemistry/ Immunofluorescence 1:10-1:500



Images

Western Blot: C-Reactive Protein/CRP Antibody (5A9) [NBP1-04282] - C-Reactive Protein Antibody (5A9) Cell lysates of NIH-3T3, HepG2, Jurkat, HeLa and SH-SY5Y (each 40ug) were resolved by SDS-PAGE, transferred to PVDF membrane and probed with anti-human CRP (1:1000). Proteins were visualized using a goat anti-mouse secondary antibody conjugated to HRP and an ECL detection system.

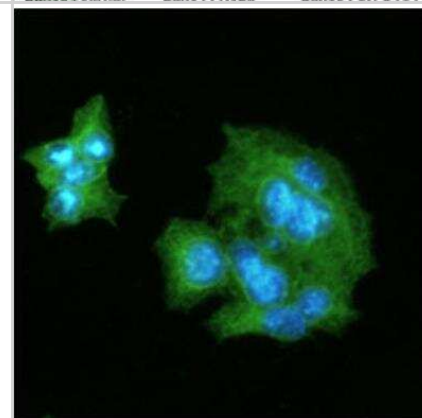


Western blot analysis

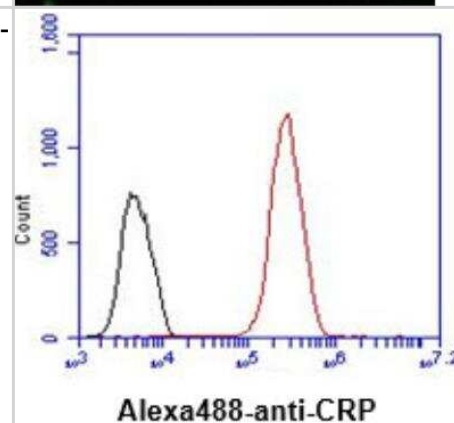
Lane1: NIH-3T3 Lane2: HepG2

Lane3: Jurkat Lane4: HeLa Lane5: SH-SY5Y

Immunocytochemistry/Immunofluorescence: C-Reactive Protein/CRP Antibody (5A9) [NBP1-04282] - Analysis of CRP in HepG2 cells line.



Flow Cytometry: C-Reactive Protein/CRP Antibody (5A9) [NBP1-04282] - Analysis of CRP in HepG2 cell line, staining at 2-5ug for 1x10⁶ cells (red line). The secondary antibody used goat anti-mouse IgG Alexa fluor 488 conjugate. Isotype control antibody was mouse IgG (black line).





Novus Biologicals USA

10730 E. Briarwood Avenue
Centennial, CO 80112
USA
Phone: 303.730.1950
Toll Free: 1.888.506.6887
Fax: 303.730.1966
nb-customerservice@bio-techne.com

Bio-Techne Canada

21 Canmotor Ave
Toronto, ON M8Z 4E6
Canada
Phone: 905.827.6400
Toll Free: 855.668.8722
Fax: 905.827.6402
canada.inquires@bio-techne.com

Bio-Techne Ltd

19 Barton Lane
Abingdon Science Park
Abingdon, OX14 3NB, United Kingdom
Phone: (44) (0) 1235 529449
Free Phone: 0800 37 34 15
Fax: (44) (0) 1235 533420
info.EMEA@bio-techne.com

General Contact Information

www.novusbio.com
Technical Support: nb-technical@bio-techne.com
Orders: nb-customerservice@bio-techne.com
General: novus@novusbio.com

Limitations

This product is for research use only and is not approved for use in humans or in clinical diagnosis. Primary Antibodies are guaranteed for 1 year from date of receipt.

For more information on our 100% guarantee, please visit www.novusbio.com/guarantee

Earn gift cards/discounts by submitting a review: www.novusbio.com/reviews/submit/NBP1-04282

Earn gift cards/discounts by submitting a publication using this product:
www.novusbio.com/publications

