

Product Datasheet

Cyclin A1 Antibody NBP1-02902

Unit Size: 0.05 ml

Store at 4C short term. Aliquot and store at -20C long term. Avoid freeze-thaw cycles.

www.novusbio.com



technical@novusbio.com

Reviews: 1 Publications: 1

Protocols, Publications, Related Products, Reviews, Research Tools and Images at:
www.novusbio.com/NBP1-02902

Updated 2/24/2022 v.20.1

**Earn rewards for product
reviews and publications.**

Submit a publication at www.novusbio.com/publications

Submit a review at www.novusbio.com/reviews/destination/NBP1-02902



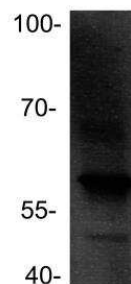
NBP1-02902**Cyclin A1 Antibody**

Product Information	
Unit Size	0.05 ml
Concentration	80 mg/ml
Storage	Store at 4C short term. Aliquot and store at -20C long term. Avoid freeze-thaw cycles.
Clonality	Polyclonal
Preservative	0.01% Sodium Azide
Isotype	IgG
Purity	Delipidation and Defibrination
Buffer	Delipidated and defibrinated serum
Product Description	
Host	Rabbit
Gene ID	8900
Gene Symbol	CCNA1
Species	Human, Mouse, Rat
Specificity/Sensitivity	Antiserum will specifically react with a 60 kDa Cyclin A1 protein from human, rat and mouse tissue. No reaction was observed against other related cyclins. Cross reactivity with Cyclin A1 from other species may also occur.
Immunogen	Full length recombinant protein
Product Application Details	
Applications	Western Blot, ELISA, Immunocytochemistry/Immunofluorescence, Immunohistochemistry, Immunohistochemistry-Paraffin, Immunoprecipitation
Recommended Dilutions	Western Blot 1:500-1:5000, ELISA 1:5000-1:20000, Immunohistochemistry 1:500, Immunocytochemistry/Immunofluorescence 1:10-1:500, Immunoprecipitation 1:100, Immunohistochemistry-Paraffin 1:500
Application Notes	IHC: NBP1-02902 was validated for use in immunohistochemistry on a panel of 21 formalin-fixed, paraffin-embedded (FFPE) human tissues after heat induced antigen retrieval in pH 6.0 citrate buffer. After incubation with the primary antibody, slides were incubated with biotinylated secondary antibody, followed by alkaline phosphatase-streptavidin and chromogen. The stained slides were evaluated by a pathologist to confirm staining specificity.

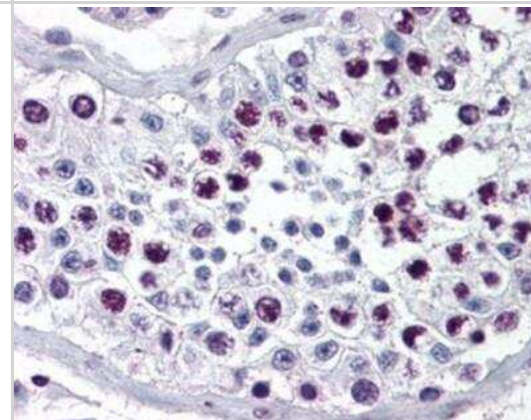


Images

Western Blot: Cyclin A1 Antibody [NBP1-02902] - Cyclin A1 western with U2OS cells. Image from verified customer review.



Immunohistochemistry-Paraffin: Cyclin A1 Antibody [NBP1-02902] - Human testis after heat-induced antigen retrieval. Antibody dilution 1:500.



Publications

Ochsenreither S, Majeti R, Schmitt T et al. Cyclin-A1 represents a new immunogenic targetable antigen expressed in acute myeloid leukemia stem cells with characteristics of a cancer-testis antigen Blood 2012-06-07 [PMID: 22529286]



Novus Biologicals USA

10730 E. Briarwood Avenue
Centennial, CO 80112
USA
Phone: 303.730.1950
Toll Free: 1.888.506.6887
Fax: 303.730.1966
nb-customerservice@bio-techne.com

Bio-Techne Canada

21 Canmotor Ave
Toronto, ON M8Z 4E6
Canada
Phone: 905.827.6400
Toll Free: 855.668.8722
Fax: 905.827.6402
canada.inquires@bio-techne.com

Bio-Techne Ltd

19 Barton Lane
Abingdon Science Park
Abingdon, OX14 3NB, United Kingdom
Phone: (44) (0) 1235 529449
Free Phone: 0800 37 34 15
Fax: (44) (0) 1235 533420
info.EMEA@bio-techne.com

General Contact Information

www.novusbio.com
Technical Support: nb-technical@bio-
techne.com
Orders: nb-customerservice@bio-techne.com
General: novus@novusbio.com

Limitations

This product is for research use only and is not approved for use in humans or in clinical diagnosis. Primary Antibodies are guaranteed for 1 year from date of receipt.

For more information on our 100% guarantee, please visit www.novusbio.com/guarantee

Earn gift cards/discounts by submitting a review: www.novusbio.com/reviews/submit/NBP1-02902

Earn gift cards/discounts by submitting a publication using this product:
www.novusbio.com/publications

