

Product Datasheet

EGR1 Antibody NBP1-02807

Unit Size: 0.05 mg

Store at 4C short term. Aliquot and store at -20C long term. Avoid freeze-thaw cycles.

www.novusbio.com



technical@novusbio.com

Protocols, Publications, Related Products, Reviews, Research Tools and Images at:
www.novusbio.com/NBP1-02807

Updated 2/24/2022 v.20.1

Earn rewards for product
reviews and publications.

Submit a publication at www.novusbio.com/publications

Submit a review at www.novusbio.com/reviews/destination/NBP1-02807



NBP1-02807

EGR1 Antibody

Product Information	
Unit Size	0.05 mg
Concentration	0.93 mg/ml
Storage	Store at 4C short term. Aliquot and store at -20C long term. Avoid freeze-thaw cycles.
Clonality	Polyclonal
Preservative	0.01% Sodium Azide
Isotype	IgG
Purity	Immunogen affinity purified
Buffer	20mM Potassium Phosphate (pH 7.2) and 0.15M NaCl
Product Description	
Host	Rabbit
Gene ID	1958
Gene Symbol	EGR1
Species	Human, Mouse
Immunogen	Synthetic peptide corresponding to an internal region near aa 85-115 of Human EGR1.
Product Application Details	
Applications	Western Blot, ELISA, Immunohistochemistry, Immunohistochemistry-Paraffin
Recommended Dilutions	Western Blot 1:500 - 1:3000, ELISA 1:4000 - 1:16000, Immunohistochemistry 10 ug/ml, Immunohistochemistry-Paraffin 10 ug/ml

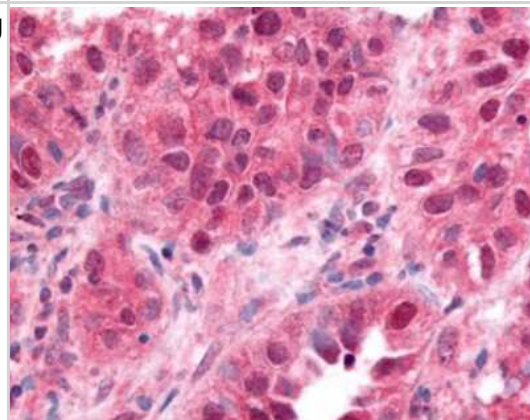


Images

Western Blot: EGR1 Antibody [NBP1-02807] - Affinity Purified anti-EGR-1 antibody shows detection of a predominant band at ~58 kD corresponding to EGR-1 present in mouse embryonic fibroblast whole cell lysate (arrowhead). Approximately 35 ug of lysate was separated by 4-20% SDS-PAGE and transferred onto nitrocellulose. After blocking the membrane was probed with the primary antibody diluted to 1:1500. Reaction occurred 2 hours at room temperature followed by washes and reaction with a 1:10000 dilution of IRDye800 conjugated Gt-a-Rabbit IgG [H&L] MX (for 45 min at room temperature).



Immunohistochemistry-Paraffin: EGR1 Antibody [NBP1-02807] - Staining of human lung small cell carcinoma tissue after heat-induced antigen retrieval. Antibody concentration 10 ug/ml.





Novus Biologicals USA

10730 E. Briarwood Avenue
Centennial, CO 80112
USA
Phone: 303.730.1950
Toll Free: 1.888.506.6887
Fax: 303.730.1966
nb-customerservice@bio-techne.com

Bio-Techne Canada

21 Canmotor Ave
Toronto, ON M8Z 4E6
Canada
Phone: 905.827.6400
Toll Free: 855.668.8722
Fax: 905.827.6402
canada.inquires@bio-techne.com

Bio-Techne Ltd

19 Barton Lane
Abingdon Science Park
Abingdon, OX14 3NB, United Kingdom
Phone: (44) (0) 1235 529449
Free Phone: 0800 37 34 15
Fax: (44) (0) 1235 533420
info.EMEA@bio-techne.com

General Contact Information

www.novusbio.com
Technical Support: nb-technical@bio-
techne.com
Orders: nb-customerservice@bio-techne.com
General: novus@novusbio.com

Limitations

This product is for research use only and is not approved for use in humans or in clinical diagnosis. Primary Antibodies are guaranteed for 1 year from date of receipt.

For more information on our 100% guarantee, please visit www.novusbio.com/guarantee

Earn gift cards/discounts by submitting a review: www.novusbio.com/reviews/submit/NBP1-02807

Earn gift cards/discounts by submitting a publication using this product:
www.novusbio.com/publications

