

Product Datasheet

CDC16 Antibody NBP1-02803

Unit Size: 0.05 mg

Store at 4C short term. Aliquot and store at -20C long term. Avoid freeze-thaw cycles.

www.novusbio.com



technical@novusbio.com

Protocols, Publications, Related Products, Reviews, Research Tools and Images at:
www.novusbio.com/NBP1-02803

Updated 3/28/2021 v.20.1

Earn rewards for product
reviews and publications.

Submit a publication at www.novusbio.com/publications

Submit a review at www.novusbio.com/reviews/destination/NBP1-02803



NBP1-02803**CDC16 Antibody**

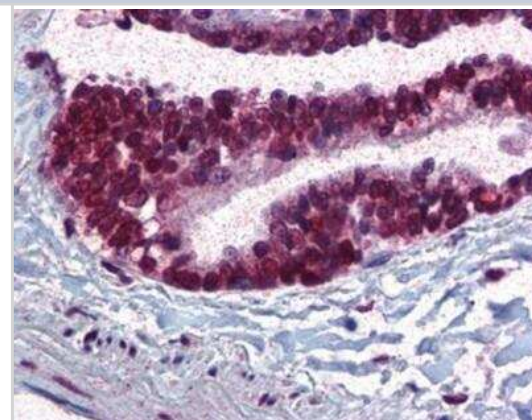
| Product Information | |
|----------------------------|--|
| Unit Size | 0.05 mg |
| Concentration | 0.97 mg/ml |
| Storage | Store at 4C short term. Aliquot and store at -20C long term. Avoid freeze-thaw cycles. |
| Clonality | Polyclonal |
| Preservative | 0.01% Sodium Azide |
| Isotype | IgG |
| Purity | Immunogen affinity purified |
| Buffer | 20mM Potassium Phosphate (pH 7.2) and 0.15M NaCl |

| Product Description | |
|--------------------------------|---|
| Host | Rabbit |
| Gene ID | 8881 |
| Gene Symbol | CDC16 |
| Species | Human |
| Specificity/Sensitivity | This antibody is specific for phosphorylated human APC6 protein at the pT580 residue. This antibody is expected to react with all isoforms of this protein. Minimal reactivity is expected with the non-phosphorylated form of the protein. |
| Immunogen | Synthetic peptide corresponding to an internal region surrounding pT580 of human CDC16. |

| Product Application Details | |
|------------------------------------|---|
| Applications | Western Blot, ELISA, Immunocytochemistry/Immunofluorescence, Immunohistochemistry, Immunohistochemistry-Paraffin |
| Recommended Dilutions | Western Blot 1:500-1:3000, ELISA 1:1000-1:10000, Immunohistochemistry 1:10-1:500, Immunocytochemistry/Immunofluorescence 1:10-1:500, Immunohistochemistry-Paraffin 5 ug/ml |
| Application Notes | IHC: NBP1-02803 was validated for use in immunohistochemistry on a panel of 21 formalin-fixed, paraffin-embedded (FFPE) human tissues after heat induced antigen retrieval in pH 6.0 citrate buffer. After incubation with the primary antibody, slides were incubated with biotinylated secondary antibody, followed by alkaline phosphatase-streptavidin and chromogen. The stained slides were evaluated by a pathologist to confirm staining specificity. |

Images

Immunohistochemistry-Paraffin: CDC16 Antibody [NBP1-02803] - Staining of human lung, respiratory epithelium. Immunohistochemistry of formalin-fixed, paraffin-embedded tissue after heat-induced antigen retrieval. Antibody concentration 5 ug/ml.





Novus Biologicals USA

10730 E. Briarwood Avenue
Centennial, CO 80112
USA
Phone: 303.730.1950
Toll Free: 1.888.506.6887
Fax: 303.730.1966
nb-customerservice@bio-techne.com

Bio-Techne Canada

21 Canmotor Ave
Toronto, ON M8Z 4E6
Canada
Phone: 905.827.6400
Toll Free: 855.668.8722
Fax: 905.827.6402
canada.inquires@bio-techne.com

Bio-Techne Ltd

19 Barton Lane
Abingdon Science Park
Abingdon, OX14 3NB, United Kingdom
Phone: (44) (0) 1235 529449
Free Phone: 0800 37 34 15
Fax: (44) (0) 1235 533420
info.EMEA@bio-techne.com

General Contact Information

www.novusbio.com
Technical Support: nb-technical@bio-
techne.com
Orders: nb-customerservice@bio-techne.com
General: novus@novusbio.com

Limitations

This product is for research use only and is not approved for use in humans or in clinical diagnosis. Primary Antibodies are guaranteed for 1 year from date of receipt.

For more information on our 100% guarantee, please visit www.novusbio.com/guarantee

Earn gift cards/discounts by submitting a review: www.novusbio.com/reviews/submit/NBP1-02803

Earn gift cards/discounts by submitting a publication using this product:
www.novusbio.com/publications

