

# Product Datasheet

## TORC1 Antibody NBP1-02438

Unit Size: 0.05 mg

Store at 4C short term. Aliquot and store at -20C long term. Avoid freeze-thaw cycles.

[www.novusbio.com](http://www.novusbio.com)



[technical@novusbio.com](mailto:technical@novusbio.com)

Protocols, Publications, Related Products, Reviews, Research Tools and Images at:  
[www.novusbio.com/NBP1-02438](http://www.novusbio.com/NBP1-02438)

Updated 2/24/2022 v.20.1

Earn rewards for product  
reviews and publications.

Submit a publication at [www.novusbio.com/publications](http://www.novusbio.com/publications)

Submit a review at [www.novusbio.com/reviews/destination/NBP1-02438](http://www.novusbio.com/reviews/destination/NBP1-02438)



**NBP1-02438**

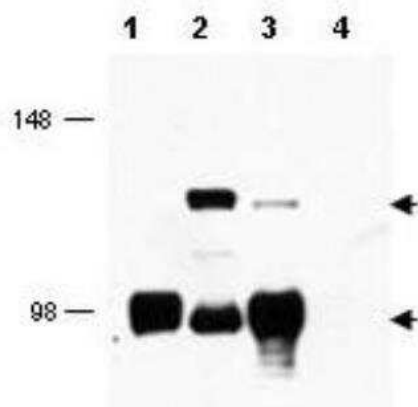
TORC1 Antibody

Product Information	
Unit Size	0.05 mg
Concentration	1 mg/ml
Storage	Store at 4C short term. Aliquot and store at -20C long term. Avoid freeze-thaw cycles.
Clonality	Polyclonal
Preservative	0.01% Sodium Azide
Isotype	IgG
Purity	Immunogen affinity purified
Buffer	20mM Potassium Phosphate (pH 7.2) and 0.15M NaCl
Product Description	
Host	Rabbit
Gene ID	23373
Gene Symbol	CRTC1
Species	Human, Mouse, Rat, Bovine, Fish, Zebrafish
Reactivity Notes	Pufferfish (100%).
Immunogen	Synthetic peptide from human TORC1 corresponding to aa 19-34.
Product Application Details	
Applications	Western Blot, ELISA, Immunohistochemistry, Immunohistochemistry-Paraffin
Recommended Dilutions	Western Blot 1:500 - 1:2000, ELISA 1:10000 - 1:40000, Immunohistochemistry 1:500, Immunohistochemistry-Paraffin 1:500

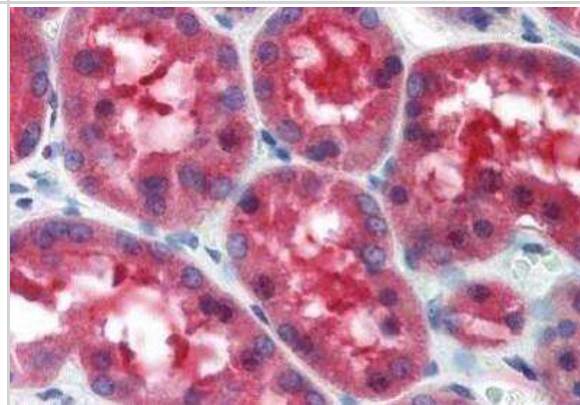


## Images

Western Blot: TORC1 Antibody [NBP1-02438] - MECT2 (lower arrowhead) and MECT2: MAML2 fusion protein (top arrowhead) in cell lysates. Lane 1 contains lysate from cells expressing MECT2 only. Lane 2 contains lysate from cells transfected with fusion protein. Lane 3 contains lysate from cells strongly expressing MECT2 and weakly expressing the fusion protein. Lane 4 contains lysate from control cells.



Immunohistochemistry-Paraffin: TORC1 Antibody [NBP1-02438] - Staining of human kidney. Immunohistochemistry of formalin-fixed, paraffin-embedded tissue after heat-induced antigen retrieval. Antibody dilution 1:500.





### **Novus Biologicals USA**

10730 E. Briarwood Avenue  
Centennial, CO 80112  
USA  
Phone: 303.730.1950  
Toll Free: 1.888.506.6887  
Fax: 303.730.1966  
nb-customerservice@bio-techne.com

### **Bio-Techne Canada**

21 Canmotor Ave  
Toronto, ON M8Z 4E6  
Canada  
Phone: 905.827.6400  
Toll Free: 855.668.8722  
Fax: 905.827.6402  
canada.inquires@bio-techne.com

### **Bio-Techne Ltd**

19 Barton Lane  
Abingdon Science Park  
Abingdon, OX14 3NB, United Kingdom  
Phone: (44) (0) 1235 529449  
Free Phone: 0800 37 34 15  
Fax: (44) (0) 1235 533420  
info.EMEA@bio-techne.com

### **General Contact Information**

[www.novusbio.com](http://www.novusbio.com)  
Technical Support: nb-technical@bio-techne.com  
Orders: nb-customerservice@bio-techne.com  
General: novus@novusbio.com

### **Limitations**

This product is for research use only and is not approved for use in humans or in clinical diagnosis. Primary Antibodies are guaranteed for 1 year from date of receipt.

For more information on our 100% guarantee, please visit [www.novusbio.com/guarantee](http://www.novusbio.com/guarantee)

Earn gift cards/discounts by submitting a review: [www.novusbio.com/reviews/submit/NBP1-02438](http://www.novusbio.com/reviews/submit/NBP1-02438)

Earn gift cards/discounts by submitting a publication using this product:  
[www.novusbio.com/publications](http://www.novusbio.com/publications)

