

Product Datasheet

Cysteinyl Leukotriene R2/CysLTR2 Antibody - BSA Free NBP1-02340

Unit Size: 0.05 mg

Keep as concentrated solution. Aliquot and store at -20C or below. Avoid multiple freeze-thaw cycles.

www.novusbio.com



technical@novusbio.com

Publications: 1

Protocols, Publications, Related Products, Reviews, Research Tools and Images at:
www.novusbio.com/NBP1-02340

Updated 10/23/2024 v.20.1

Earn rewards for product
reviews and publications.

Submit a publication at www.novusbio.com/publications

Submit a review at www.novusbio.com/reviews/destination/NBP1-02340



NBP1-02340**Cysteinyl Leukotriene R2/CysLTR2 Antibody - BSA Free**

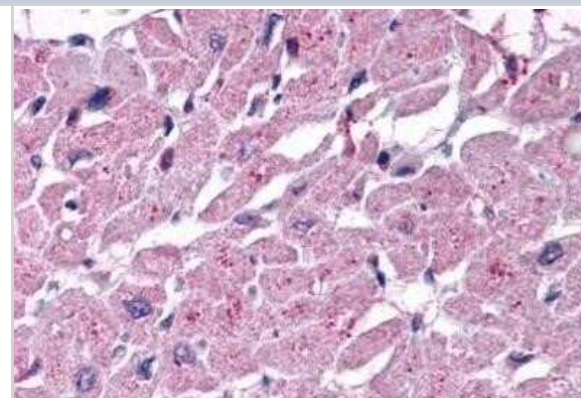
Product Information	
Unit Size	0.05 mg
Concentration	1.0 mg/ml
Storage	Keep as concentrated solution. Aliquot and store at -20C or below. Avoid multiple freeze-thaw cycles.
Clonality	Polyclonal
Preservative	0.1% Sodium Azide
Isotype	IgG
Purity	Immunogen affinity purified
Buffer	PBS

Product Description	
Description	Product can be stored undiluted at 4C for up to 1 month.
Host	Rabbit
Gene ID	57105
Gene Symbol	CYSLTR2
Species	Human, Equine
Reactivity Notes	Predicted cross-reactivity based on sequence identity: Gibbon (100%), Marmoset (100%), Gorilla (94%), Panda (94%), Canine (88%), Bovine (88%), Hamster (88%), Elephant (88%), Rabbit (88%), Opossum (88%), Porcine (88%).
Specificity/Sensitivity	Human Cysteinyl Leukotriene R2/CysLTR2. BLAST analysis of the peptide immunogen showed no homology with other human proteins, except GPR109B (59%), OXGR1 (59%), GPR81 (59%).
Immunogen	Synthetic 17 amino acid peptide from 1st extracellular domain of human Cysteinyl Leukotriene R2/CysLTR2.

Product Application Details	
Applications	ELISA, Immunohistochemistry, Immunohistochemistry-Paraffin
Recommended Dilutions	ELISA, Immunohistochemistry 1:10 - 1:500, Immunohistochemistry-Paraffin 10 ug/ml

Images

Immunohistochemistry-Paraffin: Cysteinyl Leukotriene R2/CysLTR2 Antibody - BSA Free [NBP1-02340] - Staining of Human Heart tissue after heat-induced antigen retrieval. Antibody concentration 10 ug/ml.



Publications

Brunner SM, Schrödl F, Preishuber-Pflügl J et al. Distribution of the cysteinyl leukotriene system components in the human, rat and mouse eye Experimental eye research 2023-05-19 [PMID: 37211287] (IHC-P, Human)





Novus Biologicals USA

10730 E. Briarwood Avenue
Centennial, CO 80112
USA
Phone: 303.730.1950
Toll Free: 1.888.506.6887
Fax: 303.730.1966
nb-customerservice@bio-techne.com

Bio-Techne Canada

21 Canmotor Ave
Toronto, ON M8Z 4E6
Canada
Phone: 905.827.6400
Toll Free: 855.668.8722
Fax: 905.827.6402
canada.inquires@bio-techne.com

Bio-Techne Ltd

19 Barton Lane
Abingdon Science Park
Abingdon, OX14 3NB, United Kingdom
Phone: (44) (0) 1235 529449
Free Phone: 0800 37 34 15
Fax: (44) (0) 1235 533420
info.EMEA@bio-techne.com

General Contact Information

www.novusbio.com
Technical Support: nb-technical@bio-techne.com
Orders: nb-customerservice@bio-techne.com
General: novus@novusbio.com

Products Related to NBP1-02340

HAF008	Goat anti-Rabbit IgG Secondary Antibody [HRP]
NB7160	Goat anti-Rabbit IgG (H+L) Secondary Antibody [HRP]
NBP2-24891	Rabbit IgG Isotype Control
NBP2-13897PEP	Cysteinyl Leukotriene R2/CysLTR2 Recombinant Protein Antigen

Limitations

This product is for research use only and is not approved for use in humans or in clinical diagnosis. Primary Antibodies are guaranteed for 1 year from date of receipt.

For more information on our 100% guarantee, please visit www.novusbio.com/guarantee

Earn gift cards/discounts by submitting a review: www.novusbio.com/reviews/submit/NBP1-02340

Earn gift cards/discounts by submitting a publication using this product:
www.novusbio.com/publications

