

Product Datasheet

CRHR1/CRF1 Antibody NBP1-02328

Unit Size: 0.05 mg

Store at 4C short term. Aliquot and store at -20C long term. Avoid freeze-thaw cycles.

www.novusbio.com



technical@novusbio.com

Protocols, Publications, Related Products, Reviews, Research Tools and Images at:
www.novusbio.com/NBP1-02328

Updated 3/28/2021 v.20.1

Earn rewards for product
reviews and publications.

Submit a publication at www.novusbio.com/publications

Submit a review at www.novusbio.com/reviews/destination/NBP1-02328



NBP1-02328**CRHR1/CRF1 Antibody****Product Information**

Unit Size	0.05 mg
Concentration	1 mg/ml
Storage	Store at 4C short term. Aliquot and store at -20C long term. Avoid freeze-thaw cycles.
Clonality	Polyclonal
Preservative	0.1% Sodium Azide
Isotype	IgG
Purity	Immunogen affinity purified
Buffer	PBS

Product Description

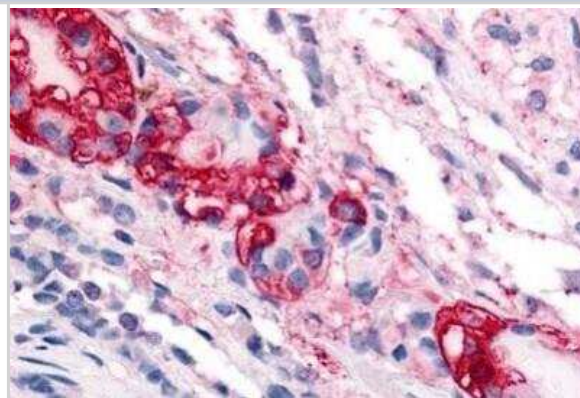
Host	Rabbit
Gene ID	1394
Gene Symbol	CRHR1
Species	Human, Mouse, Rat, Canine, Equine, Hamster, Primate, Monkey
Reactivity Notes	Gorilla, Gibbon, Marmoset. Predicted cross-reactivity based on sequence identity: Panda (100%), Elephant (87%), Sheep (80%), Lizard (80%).
Specificity/Sensitivity	Human CRF1. BLAST analysis of the peptide immunogen showed no homology with other human proteins, except CRHR2 (73%).
Immunogen	Synthetic 15 amino acid peptide from N-terminal extracellular domain of human CRHR1/CRF1.

Product Application Details

Applications	Immunohistochemistry, Immunohistochemistry-Paraffin
Recommended Dilutions	Immunohistochemistry 1:10 - 1:500, Immunohistochemistry-Paraffin 15-20 ug/ml
Application Notes	IHC: NBP1-02328 was validated for use in immunohistochemistry on a panel of 21 formalin-fixed, paraffin-embedded (FFPE) human tissues after heat induced antigen retrieval in pH 6.0 citrate buffer. After incubation with the primary antibody, slides were incubated with biotinylated secondary antibody, followed by alkaline phosphatase-streptavidin and chromogen. The stained slides were evaluated by a pathologist to confirm staining specificity.

Images

Immunohistochemistry-Paraffin: CRHR1/CRF1 Antibody [NBP1-02328] - Staining of Human pars intermedia. Concentration 20 ug/ml.





Novus Biologicals USA

10730 E. Briarwood Avenue
Centennial, CO 80112
USA
Phone: 303.730.1950
Toll Free: 1.888.506.6887
Fax: 303.730.1966
nb-customerservice@bio-techne.com

Bio-Techne Canada

21 Canmotor Ave
Toronto, ON M8Z 4E6
Canada
Phone: 905.827.6400
Toll Free: 855.668.8722
Fax: 905.827.6402
canada.inquires@bio-techne.com

Bio-Techne Ltd

19 Barton Lane
Abingdon Science Park
Abingdon, OX14 3NB, United Kingdom
Phone: (44) (0) 1235 529449
Free Phone: 0800 37 34 15
Fax: (44) (0) 1235 533420
info.EMEA@bio-techne.com

General Contact Information

www.novusbio.com
Technical Support: nb-technical@bio-techne.com
Orders: nb-customerservice@bio-techne.com
General: novus@novusbio.com

Limitations

This product is for research use only and is not approved for use in humans or in clinical diagnosis. Primary Antibodies are guaranteed for 1 year from date of receipt.

For more information on our 100% guarantee, please visit www.novusbio.com/guarantee

Earn gift cards/discounts by submitting a review: www.novusbio.com/reviews/submit/NBP1-02328

Earn gift cards/discounts by submitting a publication using this product:
www.novusbio.com/publications

