

Product Datasheet

NAPE-PLD Overexpression Lysate NBL1-13476

Unit Size: 0.1 mg

Store at -80C. Avoid freeze-thaw cycles.

www.novusbio.com



technical@novusbio.com

Protocols, Publications, Related Products, Reviews, Research Tools and Images at:
www.novusbio.com/NBL1-13476

Updated 7/24/2022 v.20.1

Earn rewards for product
reviews and publications.

Submit a publication at www.novusbio.com/publications

Submit a review at www.novusbio.com/reviews/destination/NBL1-13476



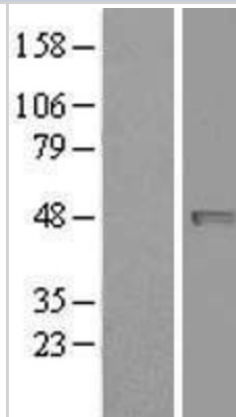
NBL1-13476

NAPE-PLD Overexpression Lysate

Product Information	
Unit Size	0.1 mg
Concentration	The exact concentration of the protein of interest cannot be determined for overexpression lysates. Please contact technical support for more information.
Storage	Store at -80C. Avoid freeze-thaw cycles.
Buffer	RIPA buffer
Target Molecular Weight	45.4 kDa
Product Description	
Description	<p>NAPE-PLD Transient Overexpression Lysate</p> <p>Expression Host: HEK293T</p> <p>Plasmid: RC209877</p> <p>Accession#: NM_198990</p> <p>Protein Tag: C-MYC/DDK</p>
Gene ID	222236
Gene Symbol	NAPEPLD
Species	Human
Notes	HEK293T cells in 10-cm dishes were transiently transfected with a non-lipid polymer transfection reagent specially designed and manufactured for large volume DNA transfection. Transfected cells were cultured for 48hrs before collection. The cells were lysed in modified RIPA buffer (25mM Tris-HCl pH7.6, 150mM NaCl, 1% NP-40, 1mM EDTA, 1xProteinase inhibitor cocktail mix, 1mM PMSF and 1mM Na3VO4, and then centrifuged to clarify the lysate. Protein concentration was measured by BCA protein assay kit. This product is manufactured by and sold under license from OriGene Technologies and its use is limited solely for research purposes.
Lysate Type	Overexpression
Product Application Details	
Applications	Western Blot
Recommended Dilutions	Western Blot
Application Notes	<p>This product is intended for use as a positive control in Western Blot.</p> <p>You will receive 1 vial of lysate (100ug), 1 vial of empty vector negative control (100ug), and 1 vial of 2xSDS sample buffer (250ul).</p>

Images

Western Blot: NAPE-PLD Overexpression Lysate (Adult Normal) [NBL1-13476] Left-Empty vector transfected control cell lysate (HEK293 cell lysate); Right -Over-expression Lysate for NAPE-PLD.





Novus Biologicals USA

10730 E. Briarwood Avenue
Centennial, CO 80112
USA

Phone: 303.730.1950
Toll Free: 1.888.506.6887
Fax: 303.730.1966
novus@novusbio.com

Bio-Techne Canada

21 Canmotor Ave
Toronto, ON M8Z 4E6
Canada

Phone: 905.827.6400
Toll Free: 855.668.8722
Fax: 905.827.6402
canada.inquires@bio-techne.com

Bio-Techne Ltd

19 Barton Lane
Abingdon Science Park
Abingdon, OX14 3NB, United Kingdom

Phone: (44) (0) 1235 529449
Free Phone: 0800 37 34 15
Fax: (44) (0) 1235 533420
info.EMEA@bio-techne.com

General Contact Information

www.novusbio.com
Technical Support: technical@novusbio.com
Orders: orders@novusbio.com
General: novus@novusbio.com

Products Related to NBL1-13476

NBP2-48571PEP	NAPE-PLD Recombinant Protein Antigen
DRP300	Adiponectin/Acrp30 [HRP]
NB110-80070	NAPE-PLD Antibody
NB100-689	COX-2 Antibody

Limitations

This product is for research use only and is not approved for use in humans or in clinical diagnosis. Lysates are guaranteed for 6 months from date of receipt.

For more information on our 100% guarantee, please visit www.novusbio.com/guarantee

Earn gift cards/discounts by submitting a review: www.novusbio.com/reviews/submit/NBL1-13476

Earn gift cards/discounts by submitting a publication using this product:
www.novusbio.com/publications

