

Product Datasheet

KLHDC9 Overexpression Lysate (Native) NBL1-12331

Unit Size: 0.1 mg

Store at -80C. Avoid freeze-thaw cycles.

www.novusbio.com



technical@novusbio.com

Protocols, Publications, Related Products, Reviews, Research Tools and Images at:
www.novusbio.com/NBL1-12331

Updated 11/27/2017 v.20.1

Earn rewards for product
reviews and publications.

Submit a publication at www.novusbio.com/publications

Submit a review at www.novusbio.com/reviews/destination/NBL1-12331

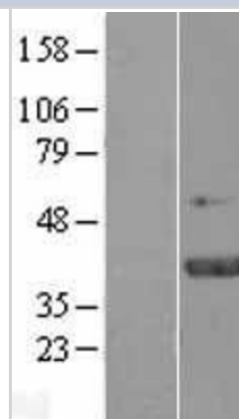


NBL1-12331**KLHDC9 Overexpression Lysate (Native)**

Product Information	
Unit Size	0.1 mg
Concentration	The exact concentration of the protein of interest cannot be determined for overexpression lysates. Please contact technical support for more information.
Storage	Store at -80C. Avoid freeze-thaw cycles.
Buffer	RIPA buffer
Target Molecular Weight	37.6 kDa
Product Description	
Gene ID	126823
Gene Symbol	KLHDC9
Species	Human
Specificity/Sensitivity	Homo sapiens kelch domain containing 9 (KLHDC9), transcript variant 1, mRNA.
Immunogen	The lysate was created in HEK293T cells, using plasmid ID RC218502 and based on accession number NM_152366. The protein contains a C-terminal DDK tag.
Notes	HEK293T cells in 10-cm dishes were transiently transfected with a non-lipid polymer transfection reagent specially designed and manufactured for large volume DNA transfection. Transfected cells were cultured for 48hrs before collection. The cells were lysed in modified RIPA buffer (25mM Tris-HCl pH7.6, 150mM NaCl, 1% NP-40, 1mM EDTA, 1xProteinase inhibitor cocktail mix, 1mM PMSF and 1mM Na3VO4, and then centrifuged to clarify the lysate. Protein concentration was measured by BCA protein assay kit. This product is manufactured by and sold under license from OriGene Technologies and its use is limited solely for research purposes.
Lysate Type	Overexpression
Lysate Protein State	Native
Product Application Details	
Applications	Western Blot
Recommended Dilutions	Western Blot
Application Notes	This product is intended for use as a positive control in Western Blot. You will receive the lysate (100ug), and an empty vector negative control (100 ug).

Images

Western Blot: KLHDC9 Overexpression Lysate (Adult Normal) [NBL1-12331] Left-Empty vector transfected control cell lysate (HEK293 cell lysate); Right -Over-expression Lysate for KLHDC9.





Novus Biologicals USA

8100 Southpark Way, A-8
Littleton, CO 80120
USA
Phone: 303.730.1950
Toll Free: 1.888.506.6887
Fax: 303.730.1966
novus@novusbio.com

Novus Biologicals Canada

461 North Service Road West, Unit B37
Oakville, ON L6M 2V5
Canada
Phone: 905.827.6400
Toll Free: 855.668.8722
Fax: 905.827.6402
canada@novusbio.com

Novus Biologicals Europe

19 Barton Lane
Abingdon Science Park
Abingdon, OX14 3NB, United Kingdom
Phone: (44) (0) 1235 529449
Free Phone: 0800 37 34 15
Fax: (44) (0) 1235 533420
info@bio-techne.com

General Contact Information

www.novusbio.com
Technical Support: technical@novusbio.com
Orders: orders@novusbio.com
General: novus@novusbio.com

Products Related to NBL1-12331

NBP1-83068PEP	KLHDC9 Recombinant Protein Antigen
NB100-1915	Ku70/XRCC6 Antibody (N3H10)
NBP1-83068	KLHDC9 Antibody
NBP2-37507	CDK2 Antibody (1A6)

Limitations

This product is for research use only and is not approved for use in humans or in clinical diagnosis. Lysates are guaranteed for 6 months from date of receipt.

For more information on our 100% guarantee, please visit www.novusbio.com/guarantee

Earn gift cards/discounts by submitting a review: www.novusbio.com/reviews/submit/NBL1-12331

Earn gift cards/discounts by submitting a publication using this product:
www.novusbio.com/publications

