

Product Datasheet

GIPC1 Overexpression Lysate (Native) NBL1-11080

Unit Size: 0.1 mg

Store at -80C. Avoid freeze-thaw cycles.

www.novusbio.com



technical@novusbio.com

Protocols, Publications, Related Products, Reviews, Research Tools and Images at:
www.novusbio.com/NBL1-11080

Updated 11/27/2017 v.20.1

Earn rewards for product
reviews and publications.

Submit a publication at www.novusbio.com/publications

Submit a review at www.novusbio.com/reviews/destination/NBL1-11080

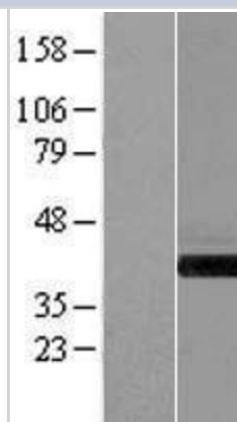


NBL1-11080**GIPC1 Overexpression Lysate (Native)**

Product Information	
Unit Size	0.1 mg
Concentration	The exact concentration of the protein of interest cannot be determined for overexpression lysates. Please contact technical support for more information.
Storage	Store at -80C. Avoid freeze-thaw cycles.
Buffer	RIPA buffer
Target Molecular Weight	35.9 kDa
Product Description	
Gene ID	10755
Gene Symbol	GIPC1
Species	Human
Specificity/Sensitivity	Homo sapiens GIPC PDZ domain containing family, member 1 (GIPC1), transcript variant 5, mRNA.
Immunogen	The lysate was created in HEK293T cells, using plasmid ID RC201175 and based on accession number NM_202470. The protein contains a C-terminal DDK tag.
Notes	HEK293T cells in 10-cm dishes were transiently transfected with a non-lipid polymer transfection reagent specially designed and manufactured for large volume DNA transfection. Transfected cells were cultured for 48hrs before collection. The cells were lysed in modified RIPA buffer (25mM Tris-HCl pH7.6, 150mM NaCl, 1% NP-40, 1mM EDTA, 1xProteinase inhibitor cocktail mix, 1mM PMSF and 1mM Na3VO4, and then centrifuged to clarify the lysate. Protein concentration was measured by BCA protein assay kit. This product is manufactured by and sold under license from OriGene Technologies and its use is limited solely for research purposes.
Lysate Type	Overexpression
Lysate Protein State	Native
Product Application Details	
Applications	Western Blot
Recommended Dilutions	Western Blot
Application Notes	This product is intended for use as a positive control in Western Blot. You will receive the lysate (100ug), and an empty vector negative control (100 ug).

Images

Western Blot: GIPC1 Overexpression Lysate (Adult Normal) [NBL1-11080] Left-Empty vector transfected control cell lysate (HEK293 cell lysate); Right -Over-expression Lysate for GIPC1.





Novus Biologicals USA

8100 Southpark Way, A-8
Littleton, CO 80120
USA

Phone: 303.730.1950
Toll Free: 1.888.506.6887
Fax: 303.730.1966
novus@novusbio.com

Novus Biologicals Canada

461 North Service Road West, Unit B37
Oakville, ON L6M 2V5
Canada

Phone: 905.827.6400
Toll Free: 855.668.8722
Fax: 905.827.6402
canada@novusbio.com

Novus Biologicals Europe

19 Barton Lane
Abingdon Science Park
Abingdon, OX14 3NB, United Kingdom

Phone: (44) (0) 1235 529449
Free Phone: 0800 37 34 15
Fax: (44) (0) 1235 533420
info@bio-techne.com

General Contact Information

www.novusbio.com
Technical Support: technical@novusbio.com
Orders: orders@novusbio.com
General: novus@novusbio.com

Products Related to NBL1-11080

NBP1-91941PEP	GIPC1 Recombinant Protein Antigen
NBP2-22203	ERK1 Antibody (1E5)
NB100-1353	GIPC1 Antibody
AF566	Neuropilin-1 Antibody [Unconjugated]

Limitations

This product is for research use only and is not approved for use in humans or in clinical diagnosis. Lysates are guaranteed for 6 months from date of receipt.

For more information on our 100% guarantee, please visit www.novusbio.com/guarantee

Earn gift cards/discounts by submitting a review: www.novusbio.com/reviews/submit/NBL1-11080

Earn gift cards/discounts by submitting a publication using this product:
www.novusbio.com/publications

