

# Product Datasheet

## Recombinant Mouse Common beta Chain Protein NBC1-18483

Unit Size: 0.1 mg

Store at 4C short term. Aliquot and store at -20C long term. Avoid freeze-thaw cycles.

[www.novusbio.com](http://www.novusbio.com)



[technical@novusbio.com](mailto:technical@novusbio.com)

Protocols, Publications, Related Products, Reviews, Research Tools and Images at:  
[www.novusbio.com/NBC1-18483](http://www.novusbio.com/NBC1-18483)

Updated 4/25/2023 v.20.1

Earn rewards for product  
reviews and publications.

Submit a publication at [www.novusbio.com/publications](http://www.novusbio.com/publications)

Submit a review at [www.novusbio.com/reviews/destination/NBC1-18483](http://www.novusbio.com/reviews/destination/NBC1-18483)



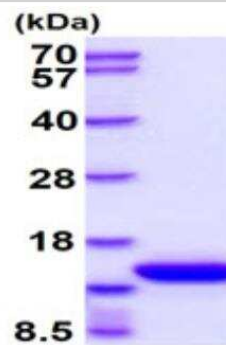
**NBC1-18483**

## Recombinant Mouse Common beta Chain Protein

Product Information	
Unit Size	0.1 mg
Concentration	1 mg/ml
Storage	Store at 4C short term. Aliquot and store at -20C long term. Avoid freeze-thaw cycles.
Preservative	No Preservative
Purity	>95%, by SDS-PAGE
Buffer	PBS (pH 7.4), 10% glycerol
Target Molecular Weight	14 kDa
Product Description	
Description	<p>An un-tagged recombinant protein corresponding to the amino acids 18-141 of Mouse Common beta Chain</p> <p><b>Source:</b> <i>E.coli</i></p> <p><b>Amino Acid Sequence:</b> MAPTRSPITV TRPWKHVEAI KEALNLLDDM PVTLNEEVEV VSNEFSFKKL TCVQTRLKIF EQGLRGNFTK LKGALNMTAS YYQTYCPPTP ETDCEQVTT YADFIDSLKT FLTDIPFECK KPVQK</p>
Gene ID	1439
Gene Symbol	CSF2RB
Species	Mouse
Details of Functionality	Mouse GM-CSF stimulates cell proliferation of the MC/9 mouse mast cells. The ED50 range is less or equal 0.06 ng/ml.
Endotoxin Note	< 1.0 EU per 1 microgram of protein (determined by LAL method)
Product Application Details	
Applications	SDS-Page, Bioactivity
Recommended Dilutions	SDS-Page, Bioactivity

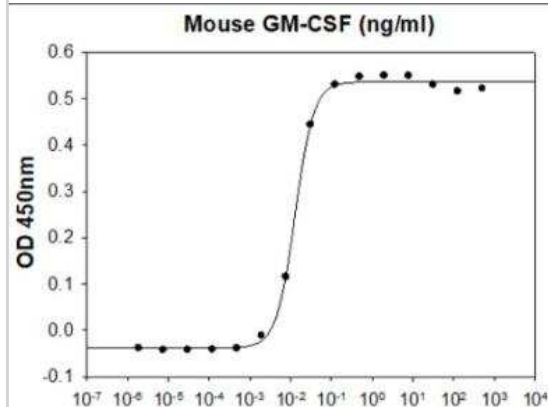
## Images

SDS-Page: Recombinant Mouse Common beta Chain Protein [NBC1-18483] - 3ug by SDS-PAGE under reducing condition and visualized by coomassie blue stain. Molecular Weight: 14 kDa (125 aa), confirmed by MALDI-TOF. Concentration: 1 mg/ml (determined by BCA assay).



15% SDS-PAGE (3ug)

Bioactivity: Recombinant Mouse Common beta Chain Protein [NBC1-18483] - Mouse GM-CSF stimulates cell proliferation of the MC/9 mouse mast cells. The ED50 range is less or equal 0.06 ng/ml.





### **Novus Biologicals USA**

10730 E. Briarwood Avenue  
Centennial, CO 80112  
USA  
Phone: 303.730.1950  
Toll Free: 1.888.506.6887  
Fax: 303.730.1966  
nb-customerservice@bio-techne.com

### **Bio-Techne Canada**

21 Canmotor Ave  
Toronto, ON M8Z 4E6  
Canada  
Phone: 905.827.6400  
Toll Free: 855.668.8722  
Fax: 905.827.6402  
canada.inquires@bio-techne.com

### **Bio-Techne Ltd**

19 Barton Lane  
Abingdon Science Park  
Abingdon, OX14 3NB, United Kingdom  
Phone: (44) (0) 1235 529449  
Free Phone: 0800 37 34 15  
Fax: (44) (0) 1235 533420  
info.EMEA@bio-techne.com

### **General Contact Information**

www.novusbio.com  
Technical Support: nb-technical@bio-  
techne.com  
Orders: nb-customerservice@bio-techne.com  
General: novus@novusbio.com

### **Limitations**

This product is for research use only and is not approved for use in humans or in clinical diagnosis. Peptides and proteins are guaranteed for 2 years from date of receipt.

For more information on our 100% guarantee, please visit [www.novusbio.com/guarantee](http://www.novusbio.com/guarantee)

Earn gift cards/discounts by submitting a review: [www.novusbio.com/reviews/submit/NBC1-18483](http://www.novusbio.com/reviews/submit/NBC1-18483)

Earn gift cards/discounts by submitting a publication using this product:  
[www.novusbio.com/publications](http://www.novusbio.com/publications)

