

Product Datasheet

Mouse Brain Whole Tissue Lysate (Adult Whole Normal) NB820-59657

Unit Size: 1 mg

Store at -80C. Avoid freeze-thaw cycles.

www.novusbio.com



technical@novusbio.com

Protocols, Publications, Related Products, Reviews, Research Tools and Images at:
www.novusbio.com/NB820-59657

Updated 10/23/2024 v.20.1

Earn rewards for product
reviews and publications.

Submit a publication at www.novusbio.com/publications

Submit a review at www.novusbio.com/reviews/destination/NB820-59657



NB820-59657

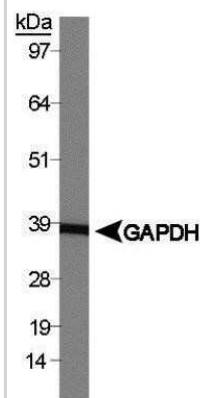
Mouse Brain Whole Tissue Lysate (Adult Whole Normal)

Product Information	
Unit Size	1 mg
Concentration	5 mg/ml
Storage	Store at -80C. Avoid freeze-thaw cycles.
Buffer	HEPES (pH 7.9), MgCl ₂ , KCl, EDTA, Sucrose, Glycerol, Sodium deoxycholate, NP-40, and a cocktail of protease inhibitors
Product Description	
Description	We recommend adding 1 x sample buffer with 5% BME (or other reducing agent) prior to use.
Species	Mouse
Specificity/Sensitivity	Total Protein - Mouse Normal Tissue: Brain
Lysate Type	Tissue
Lysate Tissue	Brain
Lysate Tissue Condition	Normal
Lysate Life Stage	Adult
Lysate Protein State	Native
Lysate Subcellular Fraction	Whole
Product Application Details	
Applications	Western Blot, Immunoprecipitation, SDS-Page
Recommended Dilutions	Western Blot 10 ug- 20 ug, Immunoprecipitation, SDS-Page
Application Notes	Western Blot, Immunoprecipitation, Electrophoresis, Enzymatic activity analysis, Protein-protein interaction, Tissue specific expression



Images

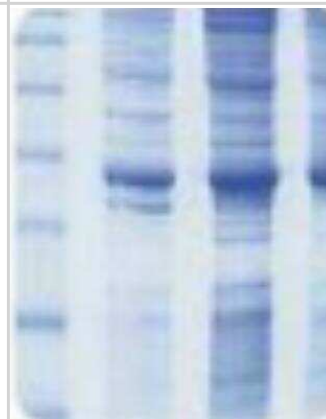
Western Blot: Mouse Brain Whole Tissue Lysate (Adult Normal) [NB820-59657] - Western blot analysis of GAPDH (NB300-323) using whole normal mouse brain lysate [NB820-59657].



SDS-Page: Mouse Brain Whole Tissue Lysate (Adult Normal) [NB820-59657] - Ponceau S staining of whole normal mouse brain lysate [NB820-59657].



SDS-Page: Mouse Brain Whole Tissue Lysate (Whole Normal) [NB820-59657] - Protein lysate is positively confirmed by Western Blot using specific biomarker: GAPDH for total protein, cytoplasmic and universal total protein; Histone for nuclear protein; Na/K ATPase for membrane protein; Vimentin for cytoskeleton protein.





Novus Biologicals USA

10730 E. Briarwood Avenue
Centennial, CO 80112
USA
Phone: 303.730.1950
Toll Free: 1.888.506.6887
Fax: 303.730.1966
nb-customerservice@bio-techne.com

Bio-Techne Canada

21 Canmotor Ave
Toronto, ON M8Z 4E6
Canada
Phone: 905.827.6400
Toll Free: 855.668.8722
Fax: 905.827.6402
canada.inquires@bio-techne.com

Bio-Techne Ltd

19 Barton Lane
Abingdon Science Park
Abingdon, OX14 3NB, United Kingdom
Phone: (44) (0) 1235 529449
Free Phone: 0800 37 34 15
Fax: (44) (0) 1235 533420
info.EMEA@bio-techne.com

General Contact Information

www.novusbio.com
Technical Support: nb-technical@bio-techne.com
Orders: nb-customerservice@bio-techne.com
General: novus@novusbio.com

Products Related to NB820-59657

NBP2-77565	Brain Tissue Slides (Adult Normal)- Frozen
------------	--

Limitations

This product is for research use only and is not approved for use in humans or in clinical diagnosis. Lysates are guaranteed for 6 months from date of receipt.

For more information on our 100% guarantee, please visit www.novusbio.com/guarantee

Earn gift cards/discounts by submitting a review: www.novusbio.com/reviews/submit/NB820-59657

Earn gift cards/discounts by submitting a publication using this product:
www.novusbio.com/publications

