

# Product Datasheet

## Human Stomach Whole Tissue Lysate (Adult Whole Normal)

**NB820-59260**

Unit Size: 1 mg

Store at -80C. Avoid freeze-thaw cycles.

[www.novusbio.com](http://www.novusbio.com)



[technical@novusbio.com](mailto:technical@novusbio.com)

**Reviews: 1**

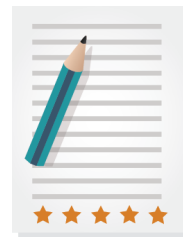
Protocols, Publications, Related Products, Reviews, Research Tools and Images at:  
[www.novusbio.com/NB820-59260](http://www.novusbio.com/NB820-59260)

Updated 10/23/2024 v.20.1

Earn rewards for product reviews and publications.

Submit a publication at [www.novusbio.com/publications](http://www.novusbio.com/publications)

Submit a review at [www.novusbio.com/reviews/destination/NB820-59260](http://www.novusbio.com/reviews/destination/NB820-59260)



**NB820-59260****Human Stomach Whole Tissue Lysate (Adult Whole Normal)****Product Information**

<b>Unit Size</b>	1 mg
<b>Concentration</b>	5.0 mg/ml
<b>Storage</b>	Store at -80C. Avoid freeze-thaw cycles.
<b>Buffer</b>	HEPES (pH 7.9), MgCl <sub>2</sub> , KCl, EDTA, Sucrose, Glycerol, Sodium deoxycholate, NP-40, and a cocktail of protease inhibitors

**Product Description**

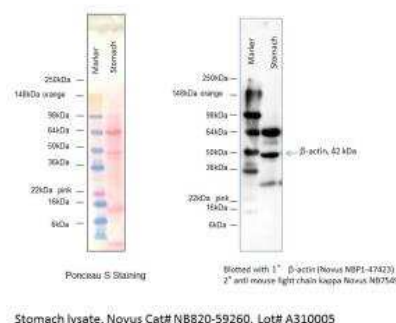
<b>Description</b>	We recommend adding 1 x sample buffer with 5% BME (or other reducing agent) prior to use.
<b>Species</b>	Human
<b>Specificity/Sensitivity</b>	Total Protein - Human Adult Normal Tissue: Stomach
<b>Lysate Type</b>	Tissue
<b>Lysate Tissue</b>	Digestive/Waste
<b>Lysate Tissue Condition</b>	Normal
<b>Lysate Life Stage</b>	Adult
<b>Lysate Protein State</b>	Native
<b>Lysate Subcellular Fraction</b>	Whole

**Product Application Details**

<b>Applications</b>	Western Blot, Immunoprecipitation
<b>Recommended Dilutions</b>	Western Blot, Immunoprecipitation
<b>Application Notes</b>	Western Blot, Immunoprecipitation, Electrophoresis, Enzymatic activity analysis, Protein-protein interaction, Tissue specific expression

**Images**

Western Blot: Human Stomach Whole Tissue Lysate (Adult Normal) [NB820-59260] - analysis of Beta Actin in human stomach tissue lysate using anti-Beta Actin antibody (Cat. #NBP1-47423) followed by goat anti-mouse kappa light chain HRP conjugated secondary antibody (Cat. #NB7549). Image from verified customer review.





### **Novus Biologicals USA**

10730 E. Briarwood Avenue  
Centennial, CO 80112  
USA  
Phone: 303.730.1950  
Toll Free: 1.888.506.6887  
Fax: 303.730.1966  
nb-customerservice@bio-techne.com

### **Bio-Techne Canada**

21 Canmotor Ave  
Toronto, ON M8Z 4E6  
Canada  
Phone: 905.827.6400  
Toll Free: 855.668.8722  
Fax: 905.827.6402  
canada.inquires@bio-techne.com

### **Bio-Techne Ltd**

19 Barton Lane  
Abingdon Science Park  
Abingdon, OX14 3NB, United Kingdom  
Phone: (44) (0) 1235 529449  
Free Phone: 0800 37 34 15  
Fax: (44) (0) 1235 533420  
info.EMEA@bio-techne.com

### **General Contact Information**

www.novusbio.com  
Technical Support: nb-technical@bio-  
techne.com  
Orders: nb-customerservice@bio-techne.com  
General: novus@novusbio.com

### **Products Related to NB820-59260**

---

NBP2-30308	Human Stomach Tissue MicroArray (Cancer)
------------	--

---

### **Limitations**

This product is for research use only and is not approved for use in humans or in clinical diagnosis. Lysates are guaranteed for 6 months from date of receipt.

For more information on our 100% guarantee, please visit [www.novusbio.com/guarantee](http://www.novusbio.com/guarantee)

Earn gift cards/discounts by submitting a review: [www.novusbio.com/reviews/submit/NB820-59260](http://www.novusbio.com/reviews/submit/NB820-59260)

Earn gift cards/discounts by submitting a publication using this product:  
[www.novusbio.com/publications](http://www.novusbio.com/publications)

