

Product Datasheet

Human Salivary Gland Whole Tissue Lysate (Adult Whole Normal)

NB820-59251

Unit Size: 1 mg

Store at -80C. Avoid freeze-thaw cycles.

www.novusbio.com



technical@novusbio.com

Protocols, Publications, Related Products, Reviews, Research Tools and Images at:
www.novusbio.com/NB820-59251

Updated 10/23/2024 v.20.1

Earn rewards for product reviews and publications.

Submit a publication at www.novusbio.com/publications

Submit a review at www.novusbio.com/reviews/destination/NB820-59251



NB820-59251**Human Salivary Gland Whole Tissue Lysate (Adult Whole Normal)****Product Information**

Unit Size	1 mg
Concentration	5.0 mg/ml
Storage	Store at -80C. Avoid freeze-thaw cycles.
Buffer	HEPES (pH 7.9), MgCl ₂ , KCl, EDTA, Sucrose, Glycerol, Sodium deoxycholate, NP-40, and a cocktail of protease inhibitors

Product Description

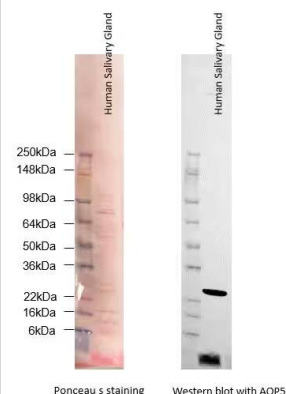
Description	We recommend adding 1 x sample buffer with 5% BME (or other reducing agent) prior to use.
Species	Human
Specificity/Sensitivity	Total Protein - Human Adult Normal Tissue: Salivary Gland
Lysate Type	Tissue
Lysate Tissue	Digestive/Waste
Lysate Tissue Condition	Normal
Lysate Life Stage	Adult
Lysate Protein State	Native
Lysate Subcellular Fraction	Whole

Product Application Details

Applications	Western Blot
Recommended Dilutions	Western Blot

Images

Western Blot: Human Salivary Gland Whole Tissue Lysate (Adult Whole Normal) [NB820-59251] - Human Salivary Gland Whole Tissue Lysate (Adult Whole Normal, 30ug) was blotted with AQP5 antibody by Western Blot. Image from a verified customer review.





Novus Biologicals USA

10730 E. Briarwood Avenue
Centennial, CO 80112
USA
Phone: 303.730.1950
Toll Free: 1.888.506.6887
Fax: 303.730.1966
nb-customerservice@bio-techne.com

Bio-Techne Canada

21 Canmotor Ave
Toronto, ON M8Z 4E6
Canada
Phone: 905.827.6400
Toll Free: 855.668.8722
Fax: 905.827.6402
canada.inquires@bio-techne.com

Bio-Techne Ltd

19 Barton Lane
Abingdon Science Park
Abingdon, OX14 3NB, United Kingdom
Phone: (44) (0) 1235 529449
Free Phone: 0800 37 34 15
Fax: (44) (0) 1235 533420
info.EMEA@bio-techne.com

General Contact Information

www.novusbio.com
Technical Support: nb-technical@bio-techne.com
Orders: nb-customerservice@bio-techne.com
General: novus@novusbio.com

Limitations

This product is for research use only and is not approved for use in humans or in clinical diagnosis. Lysates are guaranteed for 6 months from date of receipt.

For more information on our 100% guarantee, please visit www.novusbio.com/guarantee

Earn gift cards/discounts by submitting a review: www.novusbio.com/reviews/submit/NB820-59251

Earn gift cards/discounts by submitting a publication using this product:
www.novusbio.com/publications

