

Product Datasheet

Human Placenta Whole Tissue Lysate (Adult Whole Normal)

NB820-59248

Unit Size: 1 mg

Store at -80C. Avoid freeze-thaw cycles.

www.novusbio.com



technical@novusbio.com

Reviews: 1 Publications: 1

Protocols, Publications, Related Products, Reviews, Research Tools and Images at:
www.novusbio.com/NB820-59248

Updated 10/23/2024 v.20.1

Earn rewards for product reviews and publications.

Submit a publication at www.novusbio.com/publications

Submit a review at www.novusbio.com/reviews/destination/NB820-59248



NB820-59248

Human Placenta Whole Tissue Lysate (Adult Whole Normal)

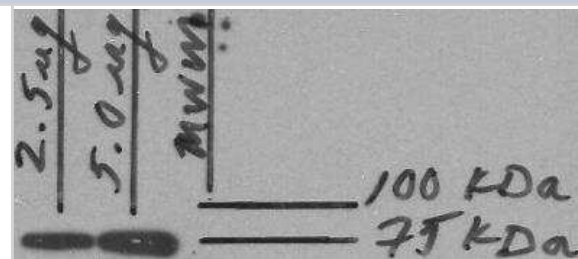
Product Information	
Unit Size	1 mg
Concentration	5.0 mg/ml
Storage	Store at -80C. Avoid freeze-thaw cycles.
Buffer	HEPES (pH 7.9), MgCl ₂ , KCl, EDTA, Sucrose, Glycerol, Sodium deoxycholate, NP-40, and a cocktail of protease inhibitors

Product Description	
Description	We recommend adding 1 x sample buffer with 5% BME (or other reducing agent) prior to use.
Species	Human
Specificity/Sensitivity	Total Protein - Human Adult Normal Tissue: Placenta
Lysate Type	Tissue
Lysate Tissue	Reproductive
Lysate Tissue Condition	Normal
Lysate Life Stage	Adult
Lysate Protein State	Native
Lysate Subcellular Fraction	Whole

Product Application Details	
Applications	Western Blot
Recommended Dilutions	Western Blot
Application Notes	Western Blot Electrophoresis

Images

Western Blot: Human Placenta Whole Tissue Lysate (Adult Whole Normal) [NB820-59248] - Used as a positive control for human PiT-1 (SLC20A1) protein on an anti-human PiT-1 Western blot using human placenta lysate. Primary antibody @ 1:1000, secondary antibody @ 1:5000, visualization by ECL. Image from verified customer review.

**Publications**

Hill JL, McIver KB, Katzer K, Foster MT Capillary Western Immunoassay Optimization of Estrogen Related Factors in Human Subcutaneous Adipose Tissue Methods and protocols 2022-04-15 [PMID: 35448699] (WB)



Novus Biologicals USA

10730 E. Briarwood Avenue
Centennial, CO 80112
USA
Phone: 303.730.1950
Toll Free: 1.888.506.6887
Fax: 303.730.1966
nb-customerservice@bio-techne.com

Bio-Techne Canada

21 Canmotor Ave
Toronto, ON M8Z 4E6
Canada
Phone: 905.827.6400
Toll Free: 855.668.8722
Fax: 905.827.6402
canada.inquires@bio-techne.com

Bio-Techne Ltd

19 Barton Lane
Abingdon Science Park
Abingdon, OX14 3NB, United Kingdom
Phone: (44) (0) 1235 529449
Free Phone: 0800 37 34 15
Fax: (44) (0) 1235 533420
info.EMEA@bio-techne.com

General Contact Information

www.novusbio.com
Technical Support: nb-technical@bio-techne.com
Orders: nb-customerservice@bio-techne.com
General: novus@novusbio.com

Products Related to NB820-59248

NBP2-77554	Placenta Tissue Slides (Adult Normal)- Frozen
------------	---

Limitations

This product is for research use only and is not approved for use in humans or in clinical diagnosis. Lysates are guaranteed for 6 months from date of receipt.

For more information on our 100% guarantee, please visit www.novusbio.com/guarantee

Earn gift cards/discounts by submitting a review: www.novusbio.com/reviews/submit/NB820-59248

Earn gift cards/discounts by submitting a publication using this product:
www.novusbio.com/publications

