

# Product Datasheet

## Human Colon Whole Tissue Lysate (Adult Whole Normal) NB820-59205

Unit Size: 1 mg

Store at -80C. Avoid freeze-thaw cycles.

[www.novusbio.com](http://www.novusbio.com)



[technical@novusbio.com](mailto:technical@novusbio.com)

**Reviews: 1 Publications: 1**

Protocols, Publications, Related Products, Reviews, Research Tools and Images at:  
[www.novusbio.com/NB820-59205](http://www.novusbio.com/NB820-59205)

Updated 7/9/2023 v.20.1

**Earn rewards for product  
reviews and publications.**

Submit a publication at [www.novusbio.com/publications](http://www.novusbio.com/publications)

Submit a review at [www.novusbio.com/reviews/destination/NB820-59205](http://www.novusbio.com/reviews/destination/NB820-59205)



**NB820-59205**

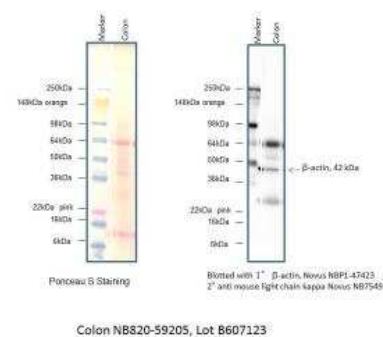
Human Colon Whole Tissue Lysate (Adult Whole Normal)

Product Information	
Unit Size	1 mg
Concentration	5.0 mg/ml
Storage	Store at -80C. Avoid freeze-thaw cycles.
Buffer	HEPES (pH 7.9), MgCl <sub>2</sub> , KCl, EDTA, Sucrose, Glycerol, Sodium deoxycholate, NP-40, and a cocktail of protease inhibitors
Product Description	
Description	We recommend adding 1 x sample buffer with 5% BME (or other reducing agent) prior to use.
Species	Human
Specificity/Sensitivity	Total Protein - Human Adult Normal Tissue: Colon
Lysate Type	Tissue
Lysate Tissue	Digestive/Waste
Lysate Tissue Condition	Normal
Lysate Life Stage	Adult
Lysate Protein State	Native
Lysate Subcellular Fraction	Whole
Product Application Details	
Applications	Western Blot
Recommended Dilutions	Western Blot
Application Notes	Western Blot Electrophoresis

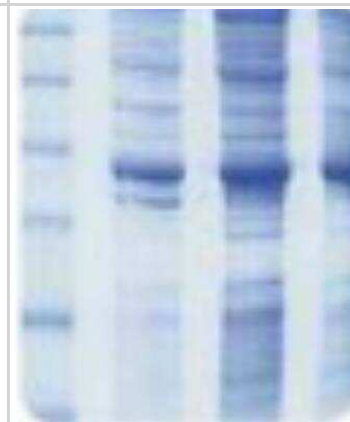


## Images

Western Blot: Human Colon Whole Tissue Lysate (Adult Normal) [NB820-59205] - analysis of Beta Actin in human colon tissue lysate (20ug) using Beta Actin antibody (Cat.# NBP1-47423) followed by goat anti-mouse kappa light chain HRP conjugated secondary antibody (Cat.#NB7549). Image from verified customer review.



SDS-Page: Human Colon Whole Tissue Lysate (Whole Normal) [NB820-59205]



## Publications

Puvvula PK, Yu Y, Sullivan KR et al. Inhibiting an RBM39/MLL1 epigenomic regulatory complex with dominant-negative peptides disrupts cancer cell transcription and proliferation Cell reports 2021-06-01 [PMID: 34077726]



### **Novus Biologicals USA**

10730 E. Briarwood Avenue  
Centennial, CO 80112  
USA  
Phone: 303.730.1950  
Toll Free: 1.888.506.6887  
Fax: 303.730.1966  
nb-customerservice@bio-techne.com

### **Bio-Techne Canada**

21 Canmotor Ave  
Toronto, ON M8Z 4E6  
Canada  
Phone: 905.827.6400  
Toll Free: 855.668.8722  
Fax: 905.827.6402  
canada.inquires@bio-techne.com

### **Bio-Techne Ltd**

19 Barton Lane  
Abingdon Science Park  
Abingdon, OX14 3NB, United Kingdom  
Phone: (44) (0) 1235 529449  
Free Phone: 0800 37 34 15  
Fax: (44) (0) 1235 533420  
info.EMEA@bio-techne.com

### **General Contact Information**

www.novusbio.com  
Technical Support: nb-technical@bio-  
techne.com  
Orders: nb-customerservice@bio-techne.com  
General: novus@novusbio.com

## **Products Related to NB820-59205**

---

NBP2-30256	Human Colon Tissue MicroArray (Rectal Cancer)
------------	---

---

### **Limitations**

This product is for research use only and is not approved for use in humans or in clinical diagnosis. Lysates are guaranteed for 6 months from date of receipt.

For more information on our 100% guarantee, please visit [www.novusbio.com/guarantee](http://www.novusbio.com/guarantee)

Earn gift cards/discounts by submitting a review: [www.novusbio.com/reviews/submit/NB820-59205](http://www.novusbio.com/reviews/submit/NB820-59205)

Earn gift cards/discounts by submitting a publication using this product:  
[www.novusbio.com/publications](http://www.novusbio.com/publications)

