

Product Datasheet

Mouse Liver Whole Tissue Lysate (Adult Whole Normal) NB800-PC17

Unit Size: 0.25 ml

Store at -70C. Avoid freeze-thaw cycles.

www.novusbio.com



technical@novusbio.com

Protocols, Publications, Related Products, Reviews, Research Tools and Images at:
www.novusbio.com/NB800-PC17

Updated 10/23/2024 v.20.1

Earn rewards for product
reviews and publications.

Submit a publication at www.novusbio.com/publications

Submit a review at www.novusbio.com/reviews/destination/NB800-PC17

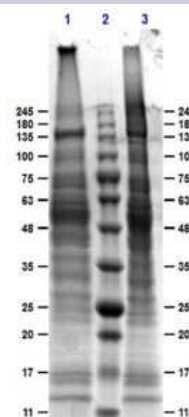


NB800-PC17**Mouse Liver Whole Tissue Lysate (Adult Whole Normal)**

Product Information	
Unit Size	0.25 ml
Concentration	Please contact technical services for concentration.
Storage	Store at -70C. Avoid freeze-thaw cycles.
Preservative	No Preservative
Purity	Multi-step
Buffer	1X SDS-PAGE Sample Buffer (62.5 mM Tris HCl, 2% SDS, 10% Glycerol and 0.005% bromophenol blue, pH 6.8), 10% (v/v) Glycerol
Product Description	
Description	Store vial at -70C or COLDER. For extended storage, aliquot contents to minimize freeze/thaw cycles.
Species	Mouse
Preparation Method	Tissues were washed exhaustively with PBS to remove blood and other debris. A lysate was prepared by homogenizing the tissue and washing the cells in cold PBS. Washed cells were incubated at 4C in modified RIPA buffer containing 150 mM sodium chloride, 50 mM Tris Cl, pH 7.4, 1 mM EDTA, 1.0% NP-40, 0.5% sodium deoxycholic acid and 0.1% SDS to lyse the cells. Protein integrity is ensured using a cocktail of protease inhibitors with broad specificity for the inhibition of aspartic, cysteine, and serine proteases as well as aminopeptidases (0.1 mM AEBSF HCl, 0.08 uM Aprotinin, 5 uM Bestatin, 1.5 uM E-64, 2 uM Leupeptin Hemisulfate and 1 uM Pepstatin A). The following phosphatase inhibitors were also added: 1 mM NaF and 1 mM Na ₃ VO ₄ . Cell debris was removed by centrifugation and membrane filtration. Protein concentration was determined by Lowry assay using a commercially available kit. The protein concentration was adjusted to 2 mg/ml and then an equal volume of 2X SDS-PAGE sample buffer was added.
Lysate Type	Tissue
Lysate Tissue Condition	Normal
Lysate Life Stage	Adult
Lysate Subcellular Fraction	Whole
Product Application Details	
Applications	Western Blot, SDS-Page
Recommended Dilutions	Western Blot, SDS-Page
Application Notes	This product has been tested by SDS-PAGE. Ready-to-use lysates are especially prepared as positive controls for separation by SDS-PAGE and subsequent western blot analysis. Lysates are prepared in denaturing buffer WITHOUT dissociating agents (i.e. no 2-mercaptoethanol or dithiothreitol has been added). Heat lysate to 95C for 5 minutes and rapidly cool. If dissociating conditions are desired, add reducing agent prior to heating. The recommended loading volume per lane is 10-20 ul depending on the size format of your gel.

Images

SDS-Page: Mouse Liver Whole Tissue Lysate (Adult Whole Normal) [NB800-PC17] - SDS PAGE of Mouse Liver Whole Tissue lysate (Adult Whole Normal). Lane 1: Reduced Mouse Liver Whole cell lysate. Lane 2: Protein Ladder Opal Pre-stained. Lane 3: Non-Reduced Mouse Whole cell lysate. Coomassie Blue Stained.





Novus Biologicals USA

10730 E. Briarwood Avenue
Centennial, CO 80112
USA
Phone: 303.730.1950
Toll Free: 1.888.506.6887
Fax: 303.730.1966
nb-customerservice@bio-techne.com

Bio-Techne Canada

21 Canmotor Ave
Toronto, ON M8Z 4E6
Canada
Phone: 905.827.6400
Toll Free: 855.668.8722
Fax: 905.827.6402
canada.inquires@bio-techne.com

Bio-Techne Ltd

19 Barton Lane
Abingdon Science Park
Abingdon, OX14 3NB, United Kingdom
Phone: (44) (0) 1235 529449
Free Phone: 0800 37 34 15
Fax: (44) (0) 1235 533420
info.EMEA@bio-techne.com

General Contact Information

www.novusbio.com
Technical Support: nb-technical@bio-
techne.com
Orders: nb-customerservice@bio-techne.com
General: novus@novusbio.com

Products Related to NB800-PC17

NBP2-30221	Human Liver Tissue MicroArray (Cancer metastasis)
------------	---

Limitations

This product is for research use only and is not approved for use in humans or in clinical diagnosis. Lysates are guaranteed for 6 months from date of receipt.

For more information on our 100% guarantee, please visit www.novusbio.com/guarantee

Earn gift cards/discounts by submitting a review: www.novusbio.com/reviews/submit/NB800-PC17

Earn gift cards/discounts by submitting a publication using this product:
www.novusbio.com/publications

