

Product Datasheet

Raji Whole Cell Lysate NB800-PC11

Unit Size: 0.5 mg

Store at -80C. Avoid freeze-thaw cycles.

www.novusbio.com



technical@novusbio.com

Protocols, Publications, Related Products, Reviews, Research Tools and Images at:
www.novusbio.com/NB800-PC11

Updated 10/23/2024 v.20.1

Earn rewards for product
reviews and publications.

Submit a publication at www.novusbio.com/publications

Submit a review at www.novusbio.com/reviews/destination/NB800-PC11



NB800-PC11**Raji Whole Cell Lysate****Product Information**

Unit Size	0.5 mg
Concentration	2.5 mg/ml
Storage	Store at -80C. Avoid freeze-thaw cycles.
Buffer	1X Laemmli Sample Buffer [62.5mM Tris HCl, 25% Glycerol, 2% SDS, 0.01% bromophenol blue, pH 6.8]

Product Description

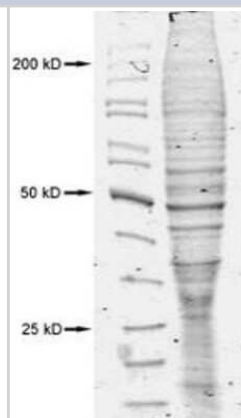
Species	Human
Specificity/Sensitivity	Raji whole cell extract lysate
Lysate Type	Cell
Lysate Tissue	Blood Lymph
Lysate Subcellular Fraction	Whole

Product Application Details

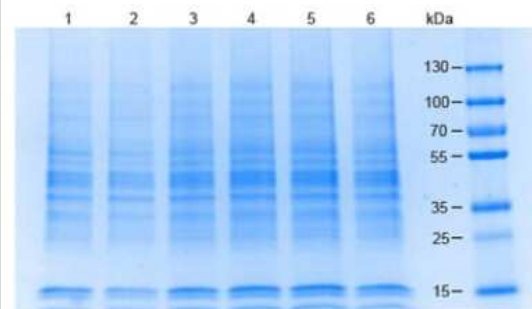
Applications	Western Blot, SDS-Page
Recommended Dilutions	Western Blot, SDS-Page
Application Notes	Ready-to-use lysates are especially prepared as positive controls for separation by SDS-PAGE and subsequent western blot analysis. Lysates are prepared in denaturing buffer WITHOut dissociating agents . Heat lysate - 95C for 5 minutes and rapidly cool. If dissociating conditions are desired, add reducing agent prior - heating. The recommended loading volume per lane is 10-20 ul depending on the size format of your gel.

Images

Western Blot: Raji Whole Cell Lysate [NB800-PC11] - Coomassie stain of 0.02 ml of NB 800-PC11 separated on a 4-20% gradient gel under reducing conditions (lane 2). MW standard is shown in lane 1.



SDS-Page: Raji Whole Cell Lysate [NB800-PC11] - Coomassie stained SDS-PAGE of 20 ug of A 549 WCL, Raji WCL separated using a 4-20% gradient gel under reducing conditions. Molecular weight standards are shown.





Novus Biologicals USA

10730 E. Briarwood Avenue
Centennial, CO 80112
USA
Phone: 303.730.1950
Toll Free: 1.888.506.6887
Fax: 303.730.1966
nb-customerservice@bio-techne.com

Bio-Techne Canada

21 Canmotor Ave
Toronto, ON M8Z 4E6
Canada
Phone: 905.827.6400
Toll Free: 855.668.8722
Fax: 905.827.6402
canada.inquires@bio-techne.com

Bio-Techne Ltd

19 Barton Lane
Abingdon Science Park
Abingdon, OX14 3NB, United Kingdom
Phone: (44) (0) 1235 529449
Free Phone: 0800 37 34 15
Fax: (44) (0) 1235 533420
info.EMEA@bio-techne.com

General Contact Information

www.novusbio.com
Technical Support: nb-technical@bio-techne.com
Orders: nb-customerservice@bio-techne.com
General: novus@novusbio.com

Limitations

This product is for research use only and is not approved for use in humans or in clinical diagnosis. Lysates are guaranteed for 6 months from date of receipt.

For more information on our 100% guarantee, please visit www.novusbio.com/guarantee

Earn gift cards/discounts by submitting a review: www.novusbio.com/reviews/submit/NB800-PC11

Earn gift cards/discounts by submitting a publication using this product:
www.novusbio.com/publications

