

# Product Datasheet

## Goat anti-Chicken IgG (H+L) Secondary Antibody [HRP] NB7608

Unit Size: 1 mg

Store at 4C short term. Aliquot and store at -20C long term. Avoid freeze-thaw cycles.

[www.novusbio.com](http://www.novusbio.com)



[technical@novusbio.com](mailto:technical@novusbio.com)

Protocols, Publications, Related Products, Reviews, Research Tools and Images at:  
[www.novusbio.com/NB7608](http://www.novusbio.com/NB7608)

Updated 10/23/2024 v.20.1

Earn rewards for product  
reviews and publications.

Submit a publication at [www.novusbio.com/publications](http://www.novusbio.com/publications)

Submit a review at [www.novusbio.com/reviews/destination/NB7608](http://www.novusbio.com/reviews/destination/NB7608)



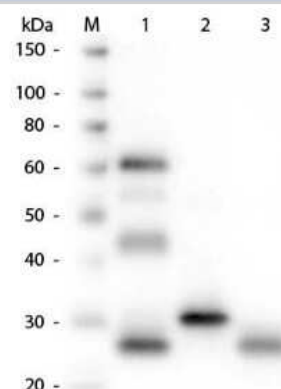
**NB7608****Goat anti-Chicken IgG (H+L) Secondary Antibody [HRP]**

<b>Product Information</b>	
<b>Unit Size</b>	1 mg
<b>Concentration</b>	Please see the vial label for concentration. If unlisted please contact technical services.
<b>Storage</b>	Store at 4C short term. Aliquot and store at -20C long term. Avoid freeze-thaw cycles.
<b>Clonality</b>	Polyclonal
<b>Preservative</b>	0.01% Gentamicin Sulfate
<b>Isotype</b>	IgG
<b>Conjugate</b>	HRP
<b>Purity</b>	Immunogen affinity purified
<b>Buffer</b>	0.02 M Potassium Phosphate, 0.15 M Sodium Chloride, pH 7.2, 10 mg/mL Bovine Serum Albumin (BSA) - Immunoglobulin and Protease free
<b>Product Description</b>	
<b>Description</b>	<p>For extended storage aliquot contents and freeze at -20C or below. Avoid cycles of freezing and thawing. Centrifuge product if not completely clear after standing at room</p> <p>This product was prepared from monospecific antiserum by immunoaffinity chromatography using Chicken IgG coupled to agarose beads. Assay by immunoelectrophoresis resulted in a single precipitin arc against anti-Peroxidase, anti-Goat Serum, Chicken IgG and Chicken Serum.</p>
<b>Host</b>	Goat
<b>Species</b>	Chicken
<b>Immunogen</b>	Goat anti-Chicken IgG (H+L) Secondary Antibody [HRP] was produced by repeated immunization with Chicken IgG whole molecule in goat.
<b>Product Application Details</b>	
<b>Applications</b>	Western Blot, ELISA, Immunohistochemistry
<b>Recommended Dilutions</b>	Western Blot 1:1000 - 1:5000, ELISA 1:20000 - 1:100000, Immunohistochemistry 1:1000 - 1:10000
<b>Application Notes</b>	<p>This product is tested in immunoelectrophoresis, western-blot, competitive western-blot, ELISA and competitive ELISA assays. Anti-Chicken IgG HRP Antibody is suitable for IHC. Specific conditions for reactivity and signal detection should be optimized by the end user.</p> <p>NOTE: Do NOT add Sodium Azide (it inhibits HRP irreversibly).</p>

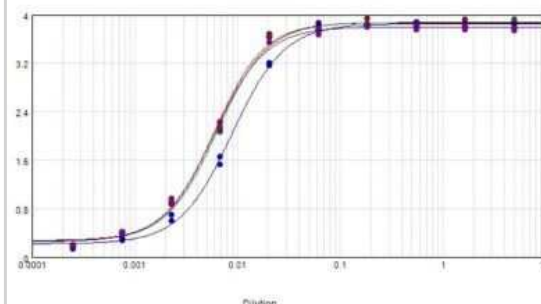


## Images

Western Blot: Goat anti-Chicken IgG (H+L) Secondary Antibody [HRP] [NB7608] - Goat anti-Chicken IgG (H+L) Secondary Antibody [HRP] [NB7608] - Lane 1: Chicken IgG whole molecule. Lane 2: Chicken IgG F(c) Fragment. Lane 3: Chicken IgG Fab Fragment. All samples were reduced. Load: 50 ng per lane. Block: incubated with blocking buffer for 30 min at RT. Primary Antibody: Anti-Chicken IgG (H&L) (GOAT) Antibody 1:1,000 for 60 min at RT. Secondary antibody: Anti-Goat IgG (DONKEY) Peroxidase Conjugated Antibody 1:40,000 in incubated with blocking buffer for 30 min at RT. Predicted/Observed Size: 25 and 72 kDa for Chicken IgG, 25 kDa for F(c) and Fab. Chicken F(c) migrates slightly higher.



ELISA: Goat anti-Chicken IgG (H+L) Secondary Antibody [HRP] [NB7608] - ELISA results of purified Goat anti-Chicken IgG (H+L) Secondary Antibody [HRP] tested against purified Chicken IgG. Each well was coated in duplicate with 1.0 ug of Chicken IgG (red line). The starting dilution of antibody was 5ug/ml and the X-axis represents the Log10 of a 3-fold dilution. This titration is a 4-parameter curve fit where the IC50 is defined as the titer of the antibody. Assay performed using TMB substrate.





### **Novus Biologicals USA**

10730 E. Briarwood Avenue  
Centennial, CO 80112  
USA  
Phone: 303.730.1950  
Toll Free: 1.888.506.6887  
Fax: 303.730.1966  
nb-customerservice@bio-techne.com

### **Bio-Techne Canada**

21 Canmotor Ave  
Toronto, ON M8Z 4E6  
Canada  
Phone: 905.827.6400  
Toll Free: 855.668.8722  
Fax: 905.827.6402  
canada.inquires@bio-techne.com

### **Bio-Techne Ltd**

19 Barton Lane  
Abingdon Science Park  
Abingdon, OX14 3NB, United Kingdom  
Phone: (44) (0) 1235 529449  
Free Phone: 0800 37 34 15  
Fax: (44) (0) 1235 533420  
info.EMEA@bio-techne.com

### **General Contact Information**

[www.novusbio.com](http://www.novusbio.com)  
Technical Support: nb-technical@bio-techne.com  
Orders: nb-customerservice@bio-techne.com  
General: novus@novusbio.com

### **Limitations**

This product is for research use only and is not approved for use in humans or in clinical diagnosis. Secondary Antibodies are guaranteed for 1 year from date of receipt.

For more information on our 100% guarantee, please visit [www.novusbio.com/guarantee](http://www.novusbio.com/guarantee)

Earn gift cards/discounts by submitting a review: [www.novusbio.com/reviews/submit/NB7608](http://www.novusbio.com/reviews/submit/NB7608)

Earn gift cards/discounts by submitting a publication using this product:  
[www.novusbio.com/publications](http://www.novusbio.com/publications)

