

Product Datasheet

Goat anti-Mouse Lambda Light Chain Secondary Antibody [HRP] NB7552

Unit Size: 1 ml

Store at 4C. Do not freeze.

www.novusbio.com



technical@novusbio.com

Reviews: 1 Publications: 4

Protocols, Publications, Related Products, Reviews, Research Tools and Images at:
www.novusbio.com/NB7552

Updated 10/23/2024 v.20.1

Earn rewards for product
reviews and publications.

Submit a publication at www.novusbio.com/publications

Submit a review at www.novusbio.com/reviews/destination/NB7552



NB7552**Goat anti-Mouse Lambda Light Chain Secondary Antibody [HRP]**

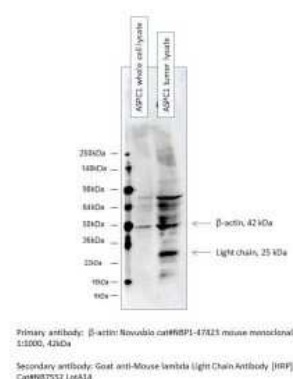
Product Information	
Unit Size	1 ml
Concentration	1.0 mg/ml
Storage	Store at 4C. Do not freeze.
Clonality	Polyclonal
Preservative	0.05% Pro-Clean 400
Isotype	IgG
Conjugate	HRP
Purity	Immunogen affinity purified
Buffer	Phosphate Buffered Saline (PBS) containing 0.2% BSA

Product Description	
Host	Goat
Gene ID	3537
Gene Symbol	IGLC1
Species	Mouse
Specificity/Sensitivity	By immunoelectrophoresis and ELISA this reacts specifically with lambda light chains common to all mouse immunoglobulins. No was detected against kappa light chain or non-immunoglobulin serum proteins. This antibody may cross react with lambda from other species.
Immunogen	Mouse Lambda Light Chain

Product Application Details	
Applications	Western Blot, ELISA, Immunocytochemistry/ Immunofluorescence, Immunohistochemistry, Immunohistochemistry-Paraffin
Recommended Dilutions	Western Blot 1:2000 - 1:20000, ELISA 1:10000-1:100000, Immunohistochemistry 1:200-1:500, Immunocytochemistry/ Immunofluorescence 1:200-1:500, Immunohistochemistry-Paraffin 1:200 - 1:2000

Images

Western Blot: Goat anti-Mouse Lambda Light Chain Secondary Antibody [HRP] [NB7552] - Goat anti-Mouse lambda Light Chain Antibody [HRP] [NB7552] - This secondary antibody was used for detection of beta-Actin in human pancreatic cancer cell lysates using beta-Actin antibody (Cat# NBP1-47423). Image from verified customer review.



Publications

Dong Y, Pi X, Bartels-Burgahn F et al. Structural principles of B cell antigen receptor assembly Nature 2022-12-01 [PMID: 36228656]

Lim B, Kydd L, Jaworski J Engineering a reporter cell line to mimic the high oligomannose presenting surface immunoglobulin of follicular lymphoma B cells Sci Rep 2021-01-09 [PMID: 33420165] (IF/IHC, Mouse)

Details:

Citation using the HRP version of this antibody.

Hung L The Monoclonal Antibody Recognized Apoptosis-Associated Protein in PCV2-Infected Peripheral Blood Mononuclear Cells Preprints 2019-11-13 (ELISA, Mouse)

Bauer E, Schleder M, Scheicher R et al. Cooperation of ETV6/RUNX1 and BCL2 enhances immunoglobulin production and accelerates glomerulonephritis in transgenic mice. Oncotarget. [PMID: 26919255]

Details:

Citation using the HRP form of this antibody.





Novus Biologicals USA

10730 E. Briarwood Avenue
Centennial, CO 80112
USA
Phone: 303.730.1950
Toll Free: 1.888.506.6887
Fax: 303.730.1966
nb-customerservice@bio-techne.com

Bio-Techne Canada

21 Canmotor Ave
Toronto, ON M8Z 4E6
Canada
Phone: 905.827.6400
Toll Free: 855.668.8722
Fax: 905.827.6402
canada.inquires@bio-techne.com

Bio-Techne Ltd

19 Barton Lane
Abingdon Science Park
Abingdon, OX14 3NB, United Kingdom
Phone: (44) (0) 1235 529449
Free Phone: 0800 37 34 15
Fax: (44) (0) 1235 533420
info.EMEA@bio-techne.com

General Contact Information

www.novusbio.com
Technical Support: nb-technical@bio-
techne.com
Orders: nb-customerservice@bio-techne.com
General: novus@novusbio.com

Products Related to NB7552

NB100-62139-1000ug	Lambda Light Chain Antibody - Azide and BSA Free
--------------------	--

Limitations

This product is for research use only and is not approved for use in humans or in clinical diagnosis. Secondary Antibodies are guaranteed for 1 year from date of receipt.

For more information on our 100% guarantee, please visit www.novusbio.com/guarantee

Earn gift cards/discounts by submitting a review: www.novusbio.com/reviews/submit/NB7552

Earn gift cards/discounts by submitting a publication using this product:
www.novusbio.com/publications

