

Product Datasheet

Goat anti-Canine IgE Heavy Chain Secondary Antibody NB7343

Unit Size: 1 ml

Store at 4C. Do not freeze.

www.novusbio.com



technical@novusbio.com

Reviews: 2 Publications: 16

Protocols, Publications, Related Products, Reviews, Research Tools and Images at:
www.novusbio.com/NB7343

Updated 10/23/2024 v.20.1

Earn rewards for product
reviews and publications.

Submit a publication at www.novusbio.com/publications

Submit a review at www.novusbio.com/reviews/destination/NB7343

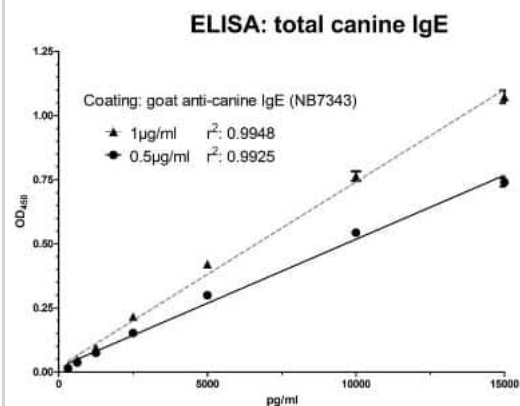


NB7343**Goat anti-Canine IgE Heavy Chain Secondary Antibody**

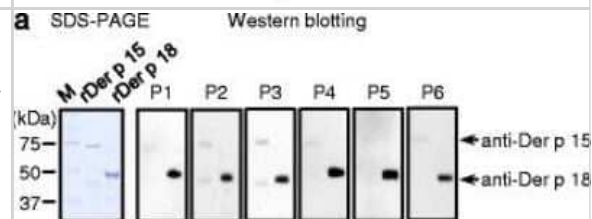
Product Information	
Unit Size	1 ml
Concentration	1.0 mg/ml
Storage	Store at 4C. Do not freeze.
Clonality	Polyclonal
Preservative	0.09% Sodium Azide
Isotype	IgG
Purity	Immunogen affinity purified
Buffer	Phosphate Buffered Saline (PBS)
Product Description	
Host	Goat
Species	Canine
Specificity/Sensitivity	By immunoelectrophoresis and ELISA this reacts specifically with dog IgE. This may cross react with IgE from other species.
Immunogen	Dog IgE
Product Application Details	
Applications	Western Blot, Dot Blot, ELISA, Immunocytochemistry/ Immunofluorescence, Immunohistochemistry, Immunohistochemistry-Paraffin
Recommended Dilutions	Western Blot 1:1000 - 1:30000, ELISA 1:1000 - 1:30000, Immunohistochemistry 1:200- 1:2000, Immunocytochemistry/ Immunofluorescence 1:200- 1:2000, Immunohistochemistry-Paraffin 1:200 - 1:2000, Dot Blot
Application Notes	ELISA 1:1,000 - 1:30,000; for coating plates 1:100 - 1:500

Images

ELISA: Goat anti-Canine IgE Heavy Chain Secondary Antibody [NB7343] - Sandwich ELISA for total dog IgE measurement showing standard curve at 2 different coating antibody concentrations. Coating: 1 μ g/ml in carbonate buffer, pH 9.6. Standard: purified dog IgE, range: 156pg/ml to 15.000 pg/ml. Detection with secondary antibody (HRP-labeled) and TMB substrate. This image was submitted via customer Review.



Dot Blot: Goat anti-Canine IgE Secondary Antibody [NB7343] - D.p. extracts have effects on MCs though the IgE-FcepsilonRI axis. SDS-PAGE of recombinants (300 ng) and Western blotting (168.8 ng, for rDer p 15; 143.8 ng of rDer p 18 per gel lane) of specific IgE in canine sera. Image collected and cropped by CiteAb from the following publication (<https://waojournal.biomedcentral.com/articles/10.1186/s40413-017-0154-3>), licensed under a CC-BY license.. Using the HRP format of this antibody.



Publications

Judit Fazekas-Singer, Josef Singer, Kristina M Ilieva, Mirosława Matz, Ina Herrmann, Edzard Spillner, Sophia N Karagiannis, Erika Jensen-Jarolim AllergoOncology: Generating a canine anticancer IgE against the epidermal growth factor receptor. *The Journal of allergy and clinical immunology* 2019-10-14 [PMID: 29746883]

Hatke A, Green D, Stasiak K, Marconi R Antibody profiling of a *Borrelia burgdorferi* (Lyme disease) C6 antibody positive, symptomatic Rottweiler and her pups *The Veterinary Journal* 2020-08-01 [PMID: 32792093] (ELISA)

Oida K, Einhorn L, Herrmann I et al. Innate function of house dust mite allergens: robust enzymatic degradation of extracellular matrix at elevated pH *World Allergy Organ J* 2017-07-14 [PMID: 28702111]

Maina E, Pelst M, Hesta M et al. Food-specific sublingual immunotherapy is well tolerated and safe in healthy dogs: a blind, randomized, placebo-controlled study *BMC Vet Res* 2017-01-20 [PMID: 28100257] (ELISA)

Maina E, Cox E. A double blind, randomized, placebo controlled trial of the efficacy, quality of life and safety of food allergen-specific sublingual immunotherapy in client owned dogs with adverse food reactions: a small pilot study *Vet. Dermatol.* [PMID: 27426929]

Details:

Citation using the HRP form of this antibody.

Kubota S, Miyaji K, Shimo Y et al. IgE reactivity to a Cry j 3, an allergen of Japanese cedar (*Cryptomeria japonica*) pollen in dogs with canine atopic dermatitis. *Vet Immunol Immunopathol.* [PMID: 22749702]

Details:

Citation using the HRP form of this antibody.

Hadzijasufovic E, Peter B, Herrmann H et al. NI-1: a novel canine mastocytoma model for studying drug resistance and IgE-dependent mast cell activation. *Allergy.* [PMID: 22583069]

Details:

Citation using the FITC form of this antibody.

Loukas A, Bethony JM, Mendez S et al. Vaccination with recombinant aspartic hemoglobinase reduces parasite load and blood loss after hookworm infection in dogs. PLoS Medicine. [PMID: 16231975]

Details:

Citation using the HRP form of this antibody.

Almeida MA, Jesus EE, Sousa-Atta ML et al. Antileishmanial antibody profile in dogs naturally infected with *Leishmania chagasi*. Vet Immunol Immunopathol. [PMID: 15911002]

Details:

Citation using the HRP form of this antibody.

Iniesta L, Gallego M, Portus M. Immunoglobulin G and E responses in various stages of canine leishmaniosis. Vet Immunol Immunopathol. [PMID: 15626463]

Details:

Citation using the HRP form of this antibody.

Moreno M, Benavidez U, Carol H et al. Local and systemic immune responses to *Echinococcus granulosus* in experimentally infected dogs. Vet Parasitol. [PMID: 15036575]

Details:

Citation using the HRP form of this antibody.

Klipper E, Sklan D, Friedman A. Maternal antibodies block induction of oral tolerance in newly hatched chicks. Vaccine. [PMID: 14670332]

Details:

Citation using the HRP form of this antibody.

More publications at <http://www.novusbio.com/NB7343>





Novus Biologicals USA

10730 E. Briarwood Avenue
Centennial, CO 80112
USA
Phone: 303.730.1950
Toll Free: 1.888.506.6887
Fax: 303.730.1966
nb-customerservice@bio-techne.com

Bio-Techne Canada

21 Canmotor Ave
Toronto, ON M8Z 4E6
Canada
Phone: 905.827.6400
Toll Free: 855.668.8722
Fax: 905.827.6402
canada.inquires@bio-techne.com

Bio-Techne Ltd

19 Barton Lane
Abingdon Science Park
Abingdon, OX14 3NB, United Kingdom
Phone: (44) (0) 1235 529449
Free Phone: 0800 37 34 15
Fax: (44) (0) 1235 533420
info.EMEA@bio-techne.com

General Contact Information

www.novusbio.com
Technical Support: nb-technical@bio-
techne.com
Orders: nb-customerservice@bio-techne.com
General: novus@novusbio.com

Limitations

This product is for research use only and is not approved for use in humans or in clinical diagnosis. Secondary Antibodies are guaranteed for 1 year from date of receipt.

For more information on our 100% guarantee, please visit www.novusbio.com/guarantee

Earn gift cards/discounts by submitting a review: www.novusbio.com/reviews/submit/NB7343

Earn gift cards/discounts by submitting a publication using this product:
www.novusbio.com/publications

