

Product Datasheet

Goat anti-Rabbit IgG (H+L) Secondary Antibody [FITC] NB7159

Unit Size: 1 ml

Store at 4C. Do not freeze.

www.novusbio.com



technical@novusbio.com

Reviews: 1 Publications: 1

Protocols, Publications, Related Products, Reviews, Research Tools and Images at:
www.novusbio.com/NB7159

Updated 9/29/2021 v.20.1

**Earn rewards for product
reviews and publications.**

Submit a publication at www.novusbio.com/publications

Submit a review at www.novusbio.com/reviews/destination/NB7159



NB7159**Goat anti-Rabbit IgG (H+L) Secondary Antibody [FITC]**

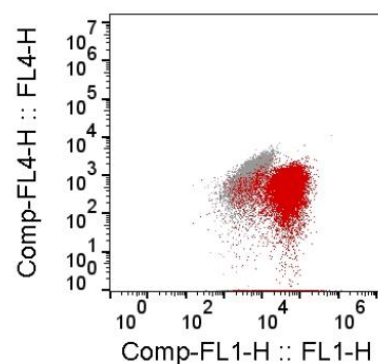
Product Information	
Unit Size	1 ml
Concentration	1.0 mg/ml
Storage	Store at 4C. Do not freeze.
Clonality	Polyclonal
Preservative	0.09% Sodium Azide
Isotype	IgG
Conjugate	FITC
Purity	Immunogen affinity purified
Buffer	Phosphate Buffered Saline (PBS), 0.2% BSA

Product Description	
Host	Goat
Species	Rabbit
Specificity/Sensitivity	By immunoelectrophoresis and ELISA this Goat anti-Rabbit IgG (H+L) Secondary Antibody [FITC] reacts specifically with rabbit IgG and with light chains common to other rabbit immunoglobulins. No was detected against non-immunoglobulin serum proteins. This may cross react with IgG from other species.
Immunogen	This Goat anti-Rabbit IgG (H+L) Secondary Antibody [FITC] was developed against rabbit IgG-heavy and light chain.

Product Application Details	
Applications	Flow Cytometry, Immunocytochemistry/Immunofluorescence, Immunohistochemistry, Immunohistochemistry-Paraffin
Recommended Dilutions	Flow Cytometry 1:50 - 1:200, Immunohistochemistry 1:50 - 1:500, Immunocytochemistry/Immunofluorescence 1:50 - 1:500, Immunohistochemistry-Paraffin

Images

Flow Cytometry: Goat anti-Rabbit, Mouse IgG (H+L) Secondary Antibody [FITC] [NB7159] - Both samples are cultured mouse microglial cells. The red is stained cells while the grey are cells with no primary antibody added (but the secondary antibody is present). Flow cytometry image submitted by a verified customer review.

**Publications**

Lucarelli G, Galleggiante V, Rutigliano M et al. Metabolomic profile of glycolysis and the pentose phosphate pathway identifies the central role of glucose-6-phosphate dehydrogenase in clear cell-renal cell carcinoma. *Oncotarget*. 2015 Apr 14 [PMID: 25945836] (IHC-P)



Novus Biologicals USA

10730 E. Briarwood Avenue
Centennial, CO 80112
USA

Phone: 303.730.1950
Toll Free: 1.888.506.6887
Fax: 303.730.1966
novus@novusbio.com

Bio-Techne Canada

21 Canmotor Ave
Toronto, ON M8Z 4E6
Canada

Phone: 905.827.6400
Toll Free: 855.668.8722
Fax: 905.827.6402
canada.inquires@bio-techne.com

Bio-Techne Ltd

19 Barton Lane
Abingdon Science Park
Abingdon, OX14 3NB, United Kingdom

Phone: (44) (0) 1235 529449
Free Phone: 0800 37 34 15
Fax: (44) (0) 1235 533420
info.EMEA@bio-techne.com

General Contact Information

www.novusbio.com
Technical Support: technical@novusbio.com
Orders: orders@novusbio.com
General: novus@novusbio.com

Limitations

This product is for research use only and is not approved for use in humans or in clinical diagnosis. Secondary Antibodies are guaranteed for 1 year from date of receipt.

For more information on our 100% guarantee, please visit www.novusbio.com/guarantee

Earn gift cards/discounts by submitting a review: www.novusbio.com/reviews/submit/NB7159

Earn gift cards/discounts by submitting a publication using this product:
www.novusbio.com/publications

